



# Grindings

Idaho Gem Club, Inc.

P.O. Box 8443  Boise, Idaho 83707-2443

VOL 85 NO 1

JANUARY 2024

## DIRECTORY

ITEM	PAGE
President's Message	1
Calendars, Upcoming Events	2
Banquet, POY Winner, Workshops, Grab Bag Stuffing Party	3
Gem Show Sign-up	4
Display Case App.	5
Holiday Workshop	6-7
New Members, New Finds, Library, Sunshine Lady	8
Bumblebee Jasper	9
General Meeting Minutes	10
Board Meeting Minutes	11

## PRESIDENT'S MESSAGE

Hello Rockhounds:

Winter is here and boy we're busy. Lot's of things going on with our club. Saturday, January 13th at 10 am is the Grab Bag filling day at our workshop behind Stewart's Gem Shop. These bags are a great money maker at the Gem Show in February and we need all hands to fill bags with all the tumbled stones everyone has been working on this year. Remember, the club pays \$125 per 5 gallon bucket, so get those tumblers rolling.

Also this month on Tuesday, January 16th, our Annual Awards Banquet is being held at the Riverside Hotel in the Aspen Room, just down from the main entrance. Happy Hour starts at 5:30 with dinner starting at 6:30. Get your tickets at Stewarts Gem Shop. Member price is \$10 and guests are \$30. We're up to about 65 people, but have plenty of room and tickets for everyone. Get your tickets by Thursday this week. I'll be turning in our count on Thursday to the Riverside, but may have some tickets available at the door. I'm looking forward to seeing you all there. We'll also have the show sign-up sheets available at the dinner, so if you haven't signed up for the show yet, they will be waiting for your there.

This year at our Banquet, Mr. Brent Stewart will be our Emcee. I've been told that entertainment and jokes will be done by Mr. Gene Stewart. So be sure not to miss the fun.

We are congratulating Liz Warner for winning the Project of the Year contest. She will have a special showcase for her project and the Project of the Year Plaque with her name engraved on it. Congratulations Liz!

February 23rd at 8 am we will meet at the Expo Idaho for show set-up day. We need all hands there. Set-up goes a lot faster and easier the more of us there are, so come show your support and excitement. This will be the greatest gem show in Idaho, so be a part of it. The show is open Saturday the 24th from 10 am until 6 pm, and Sunday the 25th from 10 am until 5 pm. It is always a fun time and a great opportunity to pick up those rare rocks you've been looking for. Don't forget the locks for your cases -- very important!

If you want to do a case at the show this year, be sure to contact me, Rick Corbett, with your request. I have many cases filled, but still have room for more. Plus, we have our black light cases to fill as well. Contact me from now until the show to get your case reserved.

We're having several workshops coming up. Check the calendar for dates and times and we'll see you there. Happy grinding!

I will be getting together with our Field Trip Coordinator, Jenni Gudapati, in the next month to set up our schedule for the coming year. I'm looking forward to some new locations for rockhounding adventures this year.

Again, I am looking forward to seeing each and every one of you at the Banquet and Show this year!

*Respectfully Submitted,*

*Rick Corbett, President*

The deadline for issues is the Friday after each Board Meeting for the current month's edition. To submit articles, please send them through email to Dana Robinson, Editor [drobinso@boisestate.edu](mailto:drobinso@boisestate.edu)

## ACTIVITY CALENDAR

## JANUARY

SUN	MON	TUE	WED	THU	FRI	SAT
	1 New Year's Day	2 Board Meeting 7 pm	3	4	5	6
7	8	9	10	11	12	13 Grab Bag Stuffing Party 10 am
14	15 ROLE Workshop 6-8:45 pm	16 Annual Banquet 5:30 pm	17	18 Workshop 6-8:45 pm	19	20
21	22	23	24	25	26	27 Workshop 6-8:45 pm
28	29	30	31			

## FEBRUARY

SUN	MON	TUE	WED	THU	FRI	SAT
				1	2	3
4	5 ROLE Workshop 6-8:45 pm	6 Board Meeting 7 pm	7	8	9	10
11	12	13	14	15	16	17
18	19 ROLE Workshop 6-8:45 pm	20 General Meeting 7 pm	21	22 Workshop 6:45-8 pm	23 Gem Show Set-up, Expo 8 am	24 Gem Show 10 am-6 pm
25 Gem Show 10 am-5 pm Tear Down	26	27	28	29		

## MARCH

SUN	MON	TUE	WED	THU	FRI	SAT
					1	2 OGMS Gem Show 10 am-5 pm
3 OGMS Gem Show 10 am-4 pm	4 ROLE Workshop 6-8:45 pm	5 Board Meeting 7 pm	6	7	8	9
10	11	12	13	14	15	16
17	18 ROLE Workshop 6-8:45 pm	19 General Meeting 7 pm	20	21 Workshop 6-8:45 pm	22	23
24 31	25	26	27	28	29	30 Workshop 10 am-2 pm

## APRIL

SUN	MON	TUE	WED	THU	FRI	SAT
	1 ROLE Workshop 6-8:45 pm	2 Board Meeting 7 pm	3	4	5	6
7	8	9	10	11	12	13
14	15 ROLE Workshop 6-8:45 pm	16 General Meeting 7 pm	17	18 Workshop 6-8:45 pm	19	20
21	22	23	24	25	26	27 Workshop 10 am-2 pm
28	29	30				



## Upcoming Events

**Idaho Gem & Mineral Show**, February 24, 10 am-6 pm, February 25, 10 am-5 pm. Expo Idaho, 5610 N. Glenwood St., Garden City

**OGMS Annual Rock & Gem Show**, March 2, 10 am-5 pm, March 3, 10 am-4 pm. O'Connor Field House, 2207 Blaine St, Caldwell

**2024 GEM CLUB BANQUET**

**IDAHO GEM CLUB  
ANNUAL DINNER BANQUET  
JANUARY 16, 2024**

Riverside Hotel  
2900 W. Chinden Blvd., Garden City

5:30 pm No Host Bar  
6:30 pm Dinner

- ★ Enjoy a Delicious Dinner
  - ★ Special Door Prizes
  - ★ Table Centerpiece Drawing
  - ★ Installation of Officers
  - ★ Special Recognition
  - Awards
- A Winner at Every Table!*

**WORKSHOPS**

See the calendar for upcoming workshop dates. Come cut your rocks and learn cabochon making. Brent Stewart, Rick Corbett, and Liz Warner keep the club lapidary workshop operating year round.

Third Thursday of each month from 6:00 pm-8:45 pm  
Saturday the week after general meeting — 10:00 am-2:00 pm  
ROLE Workshops are the First and Third Mondays —  
6:00 pm-8:45 pm

**WORKSHOP LOCATION**

2620 W. Idaho St., Boise, ID  
Next door to Stewart's Gem Shop  
\$5 Fee for each visit (kids free)

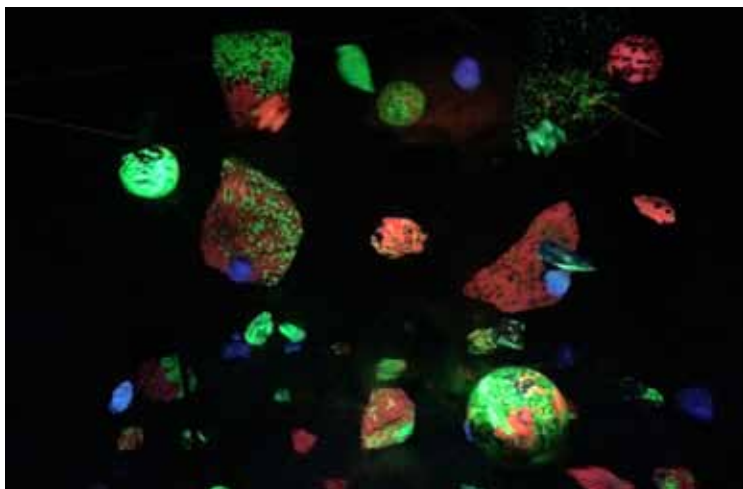
**PROJECT OF THE YEAR WINNER**

Congratulations to Liz Warner for winning the Project of the Year competition. The stone and silver work is extraordinary!

**GRAB BAG STUFFING PARTY**

We will be having our annual Grab Bag Stuffing Party on Saturday, January 13th, 2024, in preparation for the February show.

It will be at the Gem Club Workshop, 2620 W. Idaho St. in the back garage. Bring any grab bags you have sewn and the tumbled stones you have been polishing. We meet at 10 am and are usually done by noon. It is a fun get-together and we get to see lots of different material from all of the members. See you there!



## ANNUAL GEM SHOW SIGN-UP TIME

It is time to jump on board and participate in the show by signing up for the different events we have. There is a Wheel of Fortune, Garnet Dig, Grab Bag Sales, Basket Raffle, Silent Auction, Club Merchandise Sales, Scholarship Fundraiser Sales, Hospitality Table at the front door directing visitors, and Entry Ticket Sales that all need volunteers! We need to assemble a good crew for setting up the tables, Black Light Room, and Display Cases. Please get involved and help us out. This show is a regional favorite and we expect a big turnout. This is a fun way to learn more about rocks, meet fellow members and the community. Sign-up sheets will be available at meetings. You may also call the chairpeople to get added on the lists.

In January we will have a Grab Bag Stuffing Party in preparation for the show. If you have any tumbled stones or grab bags to donate, that is the time to do it. More details to come.

Our annual show will be held February 24 and 25, 2024 at Expo Idaho.

### Schedule:

Friday, February 23, 8:00 am to 6:00 pm. Show Set Up at Expo

We need volunteers to unload the trailers and set up the entire show, including display cases, dealer tables, blacklight room, demonstration area tables, and tables for the various Club Events. Please plan on giving a few hours or more helping the club bring this great Gem Show to life.

Saturday February 24 10:00 am-6:00 pm Show is open.

All stations need full volunteer schedules.

Sunday February 26 10:00 am-5:00 pm Show is open.

All stations need full volunteer schedules.

Sunday at 5:00 pm-8:00 pm Show Tear Down.

Volunteers needed to disassemble show and load everything back into trailers. We can't do it without you!

Members are encouraged to contact Rick Corbett to reserve a display case where you can show off your treasures to the public. Youth and adult prizes awarded by public vote for case design. You may install your case during the afternoon on Friday. You must have the glass door fronts on and secured by Saturday's door opening at 10:00 am.

**DISPLAY CASE APPLICATION FOR 2024  
IDAHO GEM CLUB ANNUAL GEM & MINERAL SHOW**

NAME: \_\_\_\_\_

PHONE NUMBER: (\_\_\_\_\_) \_\_\_\_\_

ADDRESS: \_\_\_\_\_

CLUB MEMBER: \_\_\_\_\_

NON-MEMBER: \_\_\_\_\_

NUMBER OF CASES: \_\_\_\_\_

CLUB'S: \_\_\_\_\_ OWN: \_\_\_\_\_

MATERIAL IN CASES: \_\_\_\_\_

INSIDE DIMENSIONS OF CLUB CASES ARE 46.5" WIDE BY 22.5" DEEP  
BY 22.5" HIGH.

**LINERS AND LOCKS WILL NOT BE PROVIDED (BRING YOUR OWN).  
ALSO BRING GLASS CLEANING SUPPLIES FOR CASE FRONTS.**

RETURN APPLICATION TO **RICK CORBETT** AT 930 E. BERGESON DR.,  
BOISE, ID 83706 or CONTACT HIM AT 208-890-2599

**CASE SET UP: FRIDAY, FEBRUARY 23RD, AFTER 1:00 P.M.**

**SHOW DATES: FEBRUARY 24TH-25TH**

CHRISTMAS WORKSHOP PARTY





## INTERESTING FINDS

Melting ice reveals dozens of artifacts amid large obsidian quarries in Canada.

<https://news.yahoo.com/melting-ice-reveals-dozens-7-221609873.html>

A new rock form has been classified. It is being called "Plastistone". It comes from melted plastic that cools within a mineral's matrix, forming a fusion. It is considered a form of sedimentary rock.

[www.yahoo.com/lifestyle/strange-plastic-rock-ominously-invaded-192800294.html](http://www.yahoo.com/lifestyle/strange-plastic-rock-ominously-invaded-192800294.html)

A good article from the company that will be mining the McDermitt Caldera for lithium.

<https://acmelithium.com/2022/03/23/acme-lithium-inc-acquires-new-lithium-project-in-mcdermitt-caldera-region/>

## IGC LIBRARY

Our Club Library will be open during the general meetings. Take a look at the books, magazines and videos available for check-out.

New issues of *Rock & Gem Magazine* are added monthly.

If you have any books you would like to donate to the library, please contact Cheryl Lawson at [dizzyphalarope@gmail.com](mailto:dizzyphalarope@gmail.com).

You may bring books to donate in a bag marked for Cheryl and leave it on top of the library cabinet.



## WELCOME NEW MEMBERS

Liz & Dwayne Kreipl  
Ben Sanchez & Amy Holtsoi

Heather Fisher  
Guy Blume

## WELCOME NEW JUNIORS

Spencer Kreipl  
Anna Kreipl  
Elijah Sanchez  
Kyden Sanchez

Nick Kreipl  
Max Kreipl  
Angelique Sanchez

## New Members:

Our website at [idahogemclub.com](http://idahogemclub.com) has all of the information regarding our club operations. We also have a facebook page for interacting and socializing. Please contact any Officer or Board Member with questions or suggestions! Welcome to your Gem Club!

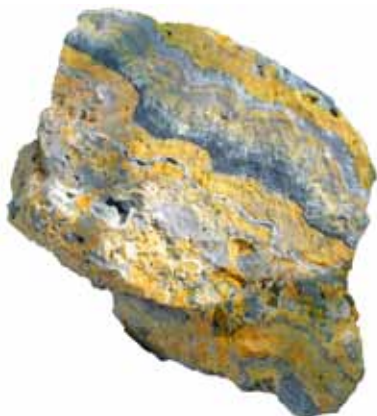
## SUNSHINE LADY REPORT

By Deana Ashton

IGC Sunshine Lady sends cheerful greetings to club members needing get well wishes, sympathy and anniversary expressions. If you know someone in need of cheer or attention, please text or call Deana at 208-794-5628.



## BUMBLEBEE JASPER



In the 1990s a new variety of “jasper” was discovered in Indonesia and rock collectors have been impressed with its bright stripes ever since. The material’s orange, grey and black bands have led to it being called Bumblebee Jasper. Its name is derived from the close resemblance it has with a bumblebee.

The stone showcases very intricate patterns as well as splendid yellow/orange hues on its body. Bumblebee Jasper is one of the most unusual and beautiful looking stones you can find in our world.

### Properties

Originating only inside the volcanoes of Australia and Indonesia, Bumblebee Jasper is very unique and hard to find. It is not actually jasper, despite its name. It’s called jasper because of its luster and patterns which make it look like traditional jasper. True jasper ranks 7 or higher on Moh’s Scale of Hardness while bumblebee jasper is closer to 5.

It is formed from volcanic matter and a combination of various different sedimentary rocks. Bumblebee jasper looks like jasper but lacks the quartzite crystal structure. It’s actually made up of a combination of sulfur, calcium, aragonite, pyrite, orpinite, and realgar. These minerals form into small stripes or bands and have a smooth exterior like jasper.

The calcite formation in Bumblebee Jasper is a little bit different from the type you find in geodes. The crystals are formed as radial fibers from a central point, rather than the larger crystals that calcite is known for. The coloring agents include realgar, and pyrite or hematite. The realgar content seems to be primarily found in orange and yellow sections of the stone. Pyrite or hematite contains the oxidized iron that makes up the black parts of the stone. The end result is bands, orbs, and other complex structures that create striking patterns across the surface of the mineral.



### Is Bumblebee Jasper Toxic?

The short answer to the question is, yes, bumblebee jasper can be dangerous. However, it’s really

only dangerous if you plan on polishing, cutting, and sanding the rock by yourself.

Some rockhounds are afraid to handle bumblebee jasper because of the presence of realgar. Realgar is a highly toxic compound and can be dangerous if inhaled or accidentally consumed. However, a polished piece of bumblebee jasper should be perfectly safe to wear as jewelry.

If you plan on customizing your bumblebee jasper, you should definitely be prepared. We recommend wearing gloves and a face mask to minimize inhaling rock dust while you cut and polish.



### Where is it Found?

Bumblebee jasper has only been discovered in Indonesia and Australia. One of the main reasons bumblebee jasper is so rare is that it’s difficult to collect. The other reason this material is so rare is that it requires unique conditions to form. The main supplier is Indogate in Indonesia. It is collected from the fumaroles at the base of Mount Papandayan. Mount Papandayan is part of a stratovolcano, which typically have a peak and are composed of layers of lava and tephra. Since Mount Papandayan is an active volcano, miners need to journey inside a dangerous environment where they run the risk of falling inside the volcano or being burned on the hot vents.

Everyone should appreciate the bravery and ambition it takes for the local Indonesians to pluck these rocks from an active volcano! Whenever you hold your little crystal, remember where it came from!



### GEM CLUB OFFICERS

PRESIDENT: Rick Corbett, 208-890-2599

1st VP: Willa Renken, 208-362-3941  
wlr\_dkr@msn.com

2nd VP: Terri Frostrom, 208-407-2405  
s\_tfrostrom@hotmail.com

SECRETARY: Dana Robinson, 208-345-3823  
drobinso@boisestate.edu

TREASURER: Teresa Nebeker  
208-890-4500, nebekert1@msn.com

FEDERATION DIRECTOR:  
Debbie Mitchell, 208-880-7991

FIELD TRIP GUIDES: Jenni & Ron Gudapadi  
208-407-1454

HISTORIAN: Jean Hoene  
360-961-4241, greyhorsejean@aol.com

LIBRARIAN: Cheryl Lawson  
208-995-6219, dizzyphalarope@gmail.com

SUNSHINE LADY: Deana Ashton  
208-794-5628, gemdigger2014@outlook.com

GRINDINGS EDITOR: Dana Robinson  
208-345-3823, drobinso@boisestate.edu

### BOARD MEMBERS:

Deana Ashton, 208-794-5628  
gemdigger2014@outlook.com

Brent Stewart, 208-863-9336  
gene@stewartsgemshopinc.com

Jason Smith, 208-899-3899  
sunshineandwine101@gmail.com

Cordell Blaine, 208-781-0229  
cordellandkrista@gmail.com

Liz Warner, 208-631-8830  
lperson55@hotmail.com

Dana Robinson, 208-345-3823  
drobinso@boisestate.edu

WEBSITE: [www.idahogemclub.com](http://www.idahogemclub.com)

EMAIL: [info@idahogemclub.com](mailto:info@idahogemclub.com)

### MINUTES OF THE IDAHO GEM CLUB GENERAL MEETING DECEMBER 19, 2023

The meeting was called to order by the president, Rick Corbett, at 7:16 and the Pledge of Allegiance was recited.

Three guests and one new member were asked to stand and introduce themselves.

Door prizes were drawn for eight juniors and 10 adults with one grand prize.

Rick asked if there were any corrections to the minutes in the *Grindings*. A motion was made by Willa and seconded by Debbie to accept the minutes as printed. The membership voted and the motion carried.

Time to get your name on the Sign-Up Sheets for the show. They are on the front table.

**Treasurer Report:** Teresa went over the financial statements for the month. Most of the dealer fees have been received for the show. The Banquet tickets are on sale. They will be at Stewart's Gem Shop after tonight. Still some members that need to get their membership renewals in.

**Project of the Year:** Everyone had a chance to look at the submissions and then vote. Then ballots will be counted.

**Banquet Report:** The January Banquet will be on Jan. 16th at the Red Lion Riverside. It will be in the conference room on the first floor, to the right of the main entrance. The No-Host Bar begins at 5:30 pm with dinner at 6:30 pm and Officer Installation and Awards after. There will also be a brief business meeting.

**Workshop Report:** The next workshop is Thursday, Dec. 21st from 6-8:45 pm. No last Saturday workshop for December. The ROLE workshops will be Jan. 1st and 15th from 6-8:45 pm. The general workshops for January are on the 18th, 6-8:45 pm, and the 27th, 10 am-2 pm.

Brent reported that the Christmas Workshop went well. Marge did two wire wrapping classes with full attendance.

Brent also discussed the auction items.

The Project of the Year votes were counted and the winner is Liz Warner for the beautiful Tiger Eye Pendant. Congratulations! There were four submissions in total. Thanks to all who participated.

Juniors excused for their meeting.

**Old Business:** We still need to get the fill display cases filled for the show. Be sure to contact Rick and get an application filled out.

Many Thanks to Brent and Liz for their hard work running the Christmas Party Workshop.

**New Business:** We will be having a Grab Bag Stuffing Party on Saturday, January 13th at 10 am. We meet at the club Workshop and fill bags to sell at the Gem Show. It is a great time and only takes a couple of hours. Bring in any tumbled stones and grab bags that you have.

Meeting was adjourned at 7:48 pm for auction.

*Respectfully submitted, Dana Robinson, Secretary*

## MINUTES OF THE IDAHO GEM CLUB BOARD MEETING JANUARY 2, 2024

Rick Corbett called the meeting to order at 7:02 pm.

**Present:** Rick Corbett, Deana Ashton, Willa Renken, Teresa Nebeker, Jason Smith, Liz Warner, Terri Frostrom, Cordell Blaine, Brent Stewart and Dana Robinson

**Guest:** Sandy Blodgett

Rick asked for any corrections to the minutes as printed in the *Grindings*. Willa made a motion to accept the minutes, which was seconded by Terri. Board members voted, motion carried.

**Treasurer Report:** Teresa went over the financial statements for deposits and disbursements. There were more donations from Micron for the Link Fund and the interest on the CDs was larger than before. She also sent in the NFMS/AFMS dues. The total for the December auction was \$1,012.

**Banquet Report:** Terri reported that the table centerpieces and prizes have been purchased. The restaurant will need a head count for meals by Jan. 11th.

**Program Report:** Brent will be doing a program on case set-up for the February meeting. Deana can bring a case to use and Terri will help with set-up.

**Junior's Report:** Cordell will do a juniors case for the show.

Deana is getting a calendar together for the FRA badge program to show what they are planning to work on.

Deana and Cordell are working on a juniors Scavenger Hunt to do at the Gem Show. It was quite fun last year.

**Workshop Report:** Brent went over upcoming workshop dates. The next ROLE workshops will be Jan. 15, Feb. 5 and Feb. 19, 6-8:45 pm. The regular workshops will be Jan. 18, 6-8:45 pm, and Jan. 27, 10 am-2 pm. In February there will be a workshop on the 22nd, but no regular Saturday workshop.

We need the ROLE certificates and show sign-up sheets for the show for the Banquet. Liz will make sure we have them before she goes.

**Old Business:** The grab bag stuffing party is on Jan. 13th. Bring all bags and polished stones. Need 2 oz. containers to fill with. Teresa will pick them up.

**New Business:** Rick will get chairpeople contacted for club positions before the banquet. Dana will send him a list in email.

We went over some banquet notes for Brent. He will be the Emcee this year.

Rick has finalized his list for officers. Willa will be 1st VP and Terri will be 2nd VP. He has asked Cordell to chair the juniors group.

Willa suggested that the Bylaws be amended to change the budget date to June after the audit has been done. We will work on that in the near future.

Sandy made a suggestion that we use the cost of the newsletter to make changes to the membership costs.

Four new member applications were reviewed. Liz made a motion to accept all the new applications, Willa seconded, the board voted and the motion carried.

Meeting adjourned at 8:10 pm.

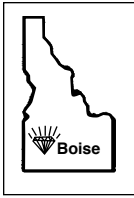
*Respectfully submitted, Dana Robinson, Secretary*



### THE GRINDINGS

is the monthly newsletter of the Idaho Gem Club, Inc., associated with the Northwest Federation of Mineralogical Societies. Permission to copy is freely granted when proper credit is given to both the publication and the author. Articles without bylines are written by the Editor or President.

CHECK OUT THE CLUB WEBSITE!  
[www.idahogemclub.com](http://www.idahogemclub.com)



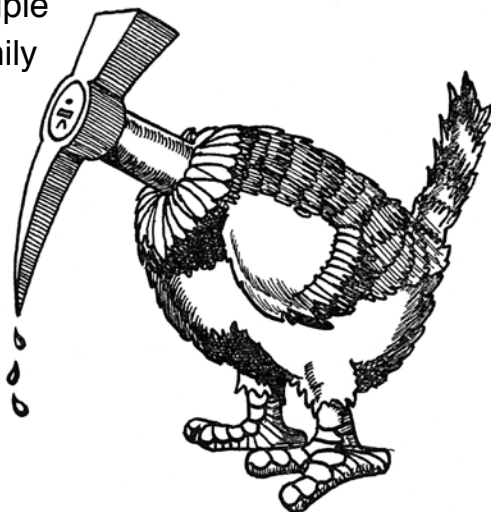
Idaho Gem Club, Inc.  
 P.O. Box 8443  
 Boise, Idaho 83707-2443

RETURN SERVICE REQUESTED

The purpose of the Idaho Gem Club is to promote mutual, educational and scientific interests and benefits of it's members in mineralogy, geology, gemology, the art of lapidary and kindred arts and sciences. Applications and/or renewals may be sent to the Idaho Gem Club, P.O. Box 8443, Boise, ID 83707-2443.

**Dues:**  
 \$22.00 individual  
 \$25.00 couple  
 \$28.00 family

**Subscription only:**  
 \$10 per year



**GENERAL MEETING:**  
 3rd Tuesday of every month: 7:00 p.m.

**BOARD MEETING:**  
 1st Tuesday of every month: 7:00 p.m.

**ADDRESS:**  
 Maple Grove Grange  
 11692 W. President Dr., Boise

