




Grindings

Idaho Gem Club, Inc.

P.O. Box 8443  Boise, Idaho 83707-2443

VOL 85 NO 2

FEBRUARY 2024

DIRECTORY

ITEM	PAGE
President's Message	1
Calendars, Upcoming Events	2
Juniors Calendar, Show Flyers	3
Display Case Guidelines, February Program, Workshops	4
Grab Bag Stuffing	5
2024 Banquet	6-7
New Members, Library, Sunshine Lady	8
Humboldtine, Oolites	9
General Meeting Minutes	10
Board Meeting Minutes	11

PRESIDENT'S MESSAGE

Hello Rockhounds:

It's finally February and show time again. Our show set-up starts Friday, February 23 at 8 am at the Fairgrounds. Everyone who is anyone needs to come and help set up. After set up it's time to do our showcases. Don't forget your locks and keys, and Windex helps also. We want to get them all pretty and amazing for the largest and best show in Idaho. Deana will be bringing donuts for everyone. The show will start Saturday at 10 am until 6 pm, and run from 10 am to 5 pm on Sunday. Then the fun begins with the tear down. All hands on board for the finale -- it goes pretty quick if we've got lots of helpers. It is lots of work, but pretty fun and amazing. I look forward to it every year. Watching someone grind on a cab machine 15 years ago is what got me hooked and a member and it's been an amazing ride ever since then.

Last month we had our Annual Awards Banquet at the Riverside Hotel. It was a grand event with good food and a lot of friendly club members. Thank you Brent Stewart for a great job of being our Emcee. And a special recognition to Gene Stewart, who for many years Emceed at our banquets with fun and much entertainment. Thank you, Gene!

We've got a meeting coming up February 20 at 7 pm. It's an important meeting with lots of information about our show. Parking permits for those intending to work at the show will be given out. Job sheets need to be filled out for those wanting to participate. A demonstration on showcase set-up given by Brent Stewart and assisted by Terri Frostrom is also scheduled. Important tips can be learned if you've never set up a case or if you want to improve on the cases you've done in the past.

Also, be sure to come to our sister club's show, the Owyhee Gem and Mineral Society, in Caldwell March 2-3 at the O'Connor Field House.

We have one more ROLE workshop this month on February 19 at 6 pm for those participating in the ROLE Program (Recognition of Lapidary Excellence). Our weekend workshop is cancelled this month because of the show.

We're getting through winter and spring is coming. That means field trips are coming. Jenni Gudapadi is our Field Trip coordinator. Her and I will be getting together to figure out our field trip schedule for this year. I'll keep you posted on dates and locations. Anyone with tips or feedback on new locations we can go to would be greatly appreciated.

Again, I want to thank everyone involved in our club banquet this year. Madelon Czarnecla, the catering manager, and Terri Frostrom for our table favors and her behind the scenes work.

Happy rockhounding and we'll see you at the show!

Respectfully Submitted,

Rick Corbett, President

The deadline for issues is the Friday after each Board Meeting for the current month's edition. To submit articles, please send them through email to Dana Robinson, Editor
drobinso@boisestate.edu

ACTIVITY CALENDAR

FEBRUARY

SUN	MON	TUE	WED	THU	FRI	SAT
				1	2	3
4	5 ROLE Workshop 6-8:45 pm	6 Board Meeting 7 pm	7	8	9	10
11	12	13	14	15	16	17
18	19 ROLE Workshop 6-8:45 pm	20 General Meeting 7 pm	21	22 Workshop 6:45-8 pm	23 Gem Show Set-up, Expo 8 am	24 Gem Show 10 am-6 pm
25 Gem Show 10 am-5 pm Tear Down	26	27	28	29		

MARCH

SUN	MON	TUE	WED	THU	FRI	SAT
					1	2 OGMS Gem Show 10 am-5 pm
3 OGMS Gem Show 10 am-4 pm	4 ROLE Workshop 6-8:45 pm	5 Board Meeting 7 pm	6	7	8	9
10	11	12	13	14	15	16
17	18 ROLE Workshop 6-8:45 pm	19 General Meeting 7 pm	20	21 Workshop 6-8:45 pm	22	23 Field Trip Mining Museum Opens at Noon
24 31	25	26	27	28	29	30 Workshop 10 am-2 pm

APRIL

SUN	MON	TUE	WED	THU	FRI	SAT
	1 ROLE Workshop 6-8:45 pm	2 Board Meeting 7 pm	3	4	5	6
7	8	9	10	11	12	13
14	15 ROLE Workshop 6-8:45 pm	16 General Meeting 7 pm	17	18 Workshop 6-8:45 pm	19	20 Field Trip Graveyard Pt. 8 am
21	22	23	24	25	26	27 Workshop 10 am-2 pm
28	29	30				

MAY

SUN	MON	TUE	WED	THU	FRI	SAT
			1	2	3	4
5	6 ROLE Workshop 6-8:45 pm	7 Board Meeting 7 pm	8	9	10	11
12	13	14	15	16	17	18
19	20 ROLE Workshop 6-8:45 pm	21 General Meeting 7 pm	22	23 Workshop 6-8:45 pm	24	25 Field Trip Tony Funk's 8 am
26	27	28	29	30	31	



Upcoming Events

Idaho Gem & Mineral Show, February 24, 10 am-6 pm, February 25, 10 am-5 pm. Expo Idaho, 5610 N. Glenwood St., Garden City

OGMS Annual Rock & Gem Show, March 2, 10 am-5 pm, March 3, 10 am-4 pm. O'Connor Field House, 2207 Blaine St, Caldwell

JUNIORS 2024 CALENDAR

We will be working on 4 badges this year from the AFMS Badge Program. You are welcome to bring a geological treasure for a quick show-and-tell at the beginning of the Juniors class.

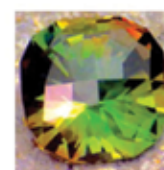
- Feb 20 — Show prep, Field Trip badge intro
- Feb 24-25 — Gem Show
Sat 10 am-6 pm / Sun 10 am-5 pm
- Mar 19 - Field Trip badge
- Apr 16 - Field Trip badge - Finalize plans for trip
- Mar/Apr — Potential Shoofly Oolite Field Trip -
Bruneau Area
- May 21 — Collecting Badge
- Jun 18 — Collecting Badge
- Jul 16 — Picnic: Stone Age Tools & Art badge activities at park
- Aug 20 — Picnic: Stone Age Tools & Art badge activities at park
- Sep 17 — Lapidary Arts - help them prep for "Project of the Year"
- Oct 15 — Lapidary Arts - help them prep for "Project of the Year"
- Nov 19 — Lapidary Arts - help them prep for "Project of the Year"
- Dec 17 — Juniors' projects due for competition —
Something fun, Christmas crafts



The Idaho Gem Club

presents its annual

GEM, MINERAL & FOSSIL SHOW



IDAHO GEMS • FLUORESCENT MINERALS • CRYSTALS • PETRIFIED WOOD
FOSSILS • HOW-TO DEMONSTRATIONS • JEWELRY • BEADS • TOOLS &
EQUIPMENT • CHILDREN'S ACTIVITIES • SILENT AUCTION • DOOR PRIZES

NEW EXPANDED BLACK-LIGHT DISPLAY FOR FLUORESCENT MINERALS!

Expo Idaho

5610 Glenwood Avenue, Boise, Idaho

February 24 & 25, 2024

Saturday 10:00 to 6:00

Sunday 10:00 to 5:00

KIDS 12 and under FREE

Adults \$5

"GEMS AND MORE IN '24"

OWYHEE GEM AND MINERAL SOCIETY
70TH ANNUAL

ROCK & GEM SHOW

O'Connor Field House

2207 Blaine, Caldwell, Id

Saturday March 2nd 2024 10 am to 6 pm

Sunday March 3rd 2024 10 am to 5 pm

Admission \$5.00

Kids 11 and under free (with adult)

DEALERS - DEMONSTRATORS
BLACK LIGHT DISPLAYS - SHOW CASES
WHEEL OF GEMS - SAND DIG - GRAB BAGS

SILENT AUCTION
RAFFLES, DOOR PRIZES - EVERY HALF HOUR
Plus... A GRAND PRIZE GIVEAWAY

www.owyheerocks.com

GENERAL DISPLAY CASE GUIDELINES

1. Decide what you want to display

- What do you like to collect?
- Specimens from a special field trip?
- What is the show subject or theme?
- What will make your display special? (unique, best quality, complete collection, favorite)
- Examples of your lapidary skills? (carving, cabs, faceting)
- Have you made jewelry or gem trees?

2. Communications from your display

- Present your display as if you are speaking to a new friend that you have not met yet.
- Purpose of your display is sharing the art of nature, public education, and promoting your interests and club hobby.
- Keep it simple without too much wording.
- Coordinate colors that are pleasant to your eye and that highlight the specimens.
- Avoid use of excess “props” (feathers, sticks, photos) in your case because they steal attention from specimens.

3. Specimens you decide to display

- All same material or different types of gems, minerals, or fossils.
- Size may be large or small, uniform or mixed.
- Quality should always be the very best you can provide.
- Number of specimens should be just enough to make your display easy to view and not look too “busy” or overfilled.
- Large specimens in back of display case, smaller in front.
- Always wash/clean your specimens before placing in the case.

4. Labeling your display

- Always have accurate names, correct spelling, punctuation and information. To help avoid mistakes, check them twice, then ask someone else to read the labels.
- Use uniform size of lettering on the labels and make the letters large enough to read at about two feet from the front of the case.
- Individual labels for each specimen should include, at a minimum, correct name of mineral or fossil and origin, or where it was found.
- If all material in a case is all the same sort of material identify it on a single label at the back or on the floor of the case.

FEBRUARY PROGRAM

The program for this month will be presented by Brent Stewart. He is going to do a presentation on setting up your case for the show. He has been doing shows for many years and has a wealth of information and many helpful tips.



WORKSHOPS

See the calendar for upcoming workshop dates. Come cut your rocks and learn cabochon making. Brent Stewart, Rick Corbett, and Liz Warner keep the club lapidary workshop operating year round.

Third Thursday of each month from 6:00 pm-8:45 pm
 Saturday the week after general meeting — 10:00 am-2:00 pm
 ROLE Workshops are the First and Third Mondays —
 6:00 pm-8:45 pm

WORKSHOP LOCATION

2620 W. Idaho St., Boise, ID
 Next door to Stewart's Gem Shop
 \$5 Fee for each visit (kids free)



GRAB BAG STUFFING PARTY



2024 ANNUAL BANQUET



**2024 Gem Club Officers**

L to R: Jenni Gudapadi, Jean Hoene, Debbie Mitchell, Teresa Nebeker, Dana Robinson, Terri Frostrom, Willa Renken, Rick Corbett

**2024 Gem Club Board of Directors**

L to R: Cordell Blaine, Jason Smith, Deana Ashton, Jenni Gudapadi, Jean Hoene (rear), Teresa Nebeker, Terri Frostrom, Debbie Mitchell, Willa Renken, Dana Robinson, Rick Corbett, Brent Stewart

**Past Presidents**

L to R: Willa Renken, Deana Ashton, Marge Conley, Dana Robinson, Gene Stewart, Brent Stewart, Rick Corbett

WELCOME NEW MEMBERS

Joel & Cheryl Mason
Sheri & David Showalter
Kevin & Danae Cahill

Dorner Baker
Kaiya Schmidt

WELCOME NEW JUNIORS

Daniel Baker
Daniel Cahill
Marc Meeker

Audrey Baker
Aidan Cahill

New Members:

Our website at idahogemclub.com has all of the information regarding our club operations. We also have a facebook page for interacting and socializing. Please contact any Officer or Board Member with questions or suggestions! Welcome to your Gem Club!

SUNSHINE LADY REPORT

By Deana Ashton

IGC Sunshine Lady sends cheerful greetings to club members needing get well wishes, sympathy and anniversary expressions. If you know someone in need of cheer or attention, please text or call Deana at 208-794-5628.

IGC LIBRARY

Our Club Library will be open during the general meetings. Take a look at the books, magazines and videos available for check-out. New issues of *Rock & Gem Magazine* are added monthly.

If you have any books you would like to donate, you may bring them in a bag marked for the Librarian and leave them on top of the library cabinet. If you have questions, please contact Tia Call at tcall76@yahoo.com.



HUMBOLDTINE

Humboldtine is a rare authigenic organic mineral occurring on fracture surfaces in coal deposits and rarely in granitic pegmatites and hydrothermal mineral deposits. As a rarely occurring mineral from the mineral class of “organic compounds,” it is a water-containing iron oxalate or the iron salt of oxalic acid. It contains carbon, hydrogen, iron and oxygen.

Humboldtine crystallizes in the monoclinic crystal system, but only rarely develops well-formed crystals with a sheen on the surfaces. It is mostly found in the form of botryoidal or fibrous aggregates and crusty coatings that are dull yellow to brownish or amber yellow in color. It can be transparent to opaque and can form from hematite in oxalic acid.

The Mohs hardness is only 1.5 to 2, so humboldtine is one of the softest minerals and can be scratched with a fingernail.

Etymology and History

Humboldtine was first discovered in a coal deposit in the Czech Republic in the early 1800s and named after naturalist, explorer, and scientist Alexander von Humboldt. The mineral was already known and characterized when the IMA was founded in 1959. Accordingly, humboldtine is listed as an officially recognized mineral.

Occurrence

The mineral is known to be found in 30 localities, including Germany, Brazil, the U.K. and Canada. Recently an old letter was found in a university archive describing a mineral found in a coal mine in the 1940s. The sample was analyzed and found to be Humboldtine. This discovery doubled the amount of the mineral known so far.

Uses

Humboldtine is an important synthetic intermediate and also a key building block for the preparation of various advanced materials.

OOLITES

Composition

Oolite or oölite (‘egg stone’) is a sedimentary rock formed from ooids, spherical grains composed of concentric layers. The term oolith can refer to oolite or individual ooids.

Ooids are most commonly composed of calcium carbonate (calcite or aragonite), but can be composed of phosphate, clays, chert, dolomite or iron minerals, including hematite. Oolitic hematite occurs at Red Mountain near Birmingham, Alabama.

They are usually formed in warm, shallow, intertidal environments, though some are formed in inland lakes. The mechanism of formation starts with a small fragment of sediment acting as a ‘seed’, such as a piece of a shell. Strong currents wash the ‘seeds’ around on the seabed, where they accumulate layers of calcite from the water. The size of the oolites reflect the time that they were exposed to the water before they were covered with later sediment.

Oolites are often used in the home aquarium industry because their small grain size (0.2 to 1.22 mm) is ideal for shallow static beds and bottom covering of up to 1” in depth.

Occurrence

Some oolitic limestone forms the Cotswold Hills in England, as well as the Isle of Portland (famous Portland Stone), and part of the North York Moors.

The Atlantic Coastal Ridge of southeastern Florida, the islands of the Lower Florida Keys, and much of the Everglades, are underlain by Miami Oolite. This limestone was formed by deposition when shallow seas covered the area between periods of glaciation.

Oolites also appear in Indiana, Pennsylvania, Maryland, West Virginia and Virginia.

One of the world’s largest freshwater lakebed oolites is the Shoofly Oolite, a section of the Glenss Ferry Formation on southwestern Idaho’s Snake River Plain. 10 million years ago, the Plain formed the bed of Lake Idaho. Wave action in the lake washed sediments back and forth in the shallows on the southwestern shore, forming ooids. When the lake drained, the oolite was left behind. The other sediments eroded away, while the more resistant oolite weathered into hummocks, small arches and other natural “sculptures”. The Shoofly Oolite lies on public land west of Bruneau, Idaho. The physical and chemical properties of the Shoofly Oolite are the setting for a suite of rare plants, which the BLM protects through land use management and on-site interpretation.

There are a couple of websites to visit for the Oolite Interpretive Trail near Grandview:

www.onlyinyourstate.com/idaho/ancient-rocks-id/

www.itstartedoutdoors.com/oolite-interpretive-trail/

GEM CLUB OFFICERS

PRESIDENT: Rick Corbett, 208-890-2599

1st VP: Willa Renken, 208-362-3941
wlr_dkr@msn.com

2nd VP: Terri Frostrom, 208-407-2405
s_tfrostrom@hotmail.com

SECRETARY: Dana Robinson, 208-345-3823
drobinso@boisestate.edu

TREASURER: Teresa Nebeker, 208-890-4500
nebekert1@msn.com

FEDERATION DIRECTOR:
Debbie Mitchell, 208-880-7991

FIELD TRIP GUIDES: Jenni & Ron Gudapadi
208-407-1454

HISTORIAN: Jean Hoene, 360-961-4241
greyhorsejean@aol.com

LIBRARIAN: Tia Call, 208-602-4594
tcall76@yahoo.com

SUNSHINE LADY: Deana Ashton
208-794-5628, gemdigger2014@outlook.com

GRINDINGS EDITOR: Dana Robinson
208-345-3823, drobinso@boisestate.edu

BOARD MEMBERS:

Deana Ashton, 208-794-5628
gemdigger2014@outlook.com

Brent Stewart, 208-863-9336
gene@stewartsgemshopinc.com

Jason Smith, 208-899-3899
sunshineandwine101@gmail.com

Cordell Blaine, 208-781-0229
cordellandkrista@gmail.com

Liz Warner, 208-631-8830
lperson55@hotmail.com

Dana Robinson, 208-345-3823
drobinso@boisestate.edu

WEBSITE: www.idahogemclub.com

EMAIL: info@idahogemclub.com

MINUTES OF THE IDAHO GEM CLUB GENERAL MEETING

JANUARY 16, 2024

Brent welcomed all to the 85th Annual Gem Club Banquet at 6:26 pm, and introduced the head table.

Linda gave the invocation and everyone enjoyed a good meal and great comraderie.

Brent began the presentation at 7:00 pm and thanked Terri Frostrom and Becky Gibson for their hard work on the Banquet Committee.

He congratulated Gene and Alice Stewart on 61 years of marriage, Kathleen Whitacre as the scholarship winner, and Liz Warner for winning the Project of the Year competition.

There were several first time attendees and one new member. The Past Presidents were listed and asked to stand: Gene Stewart, Willa Renken, Marge Conley, Brent Stewart, Dana Robinson, Deana Ashton, and Rick Corbett.

Brent then asked for a moment of silence for the four members that were lost during the past year.

ROLE Certificates were awarded to: Greg Bond, Lyle Tarbot, Matt McFarland, and Jean Hoene.

The meeting was called to order by the president, Rick Corbett, at 7:30 and the Pledge of Allegiance was recited.

The Table Favors were awarded and door prizes were drawn for five winners.

Rick asked if there were any corrections to the minutes in the *Grindings*. A motion was made by Willa and seconded by Deana to accept the minutes as printed. The membership voted and the motion carried with one opposed.

Club Chairpeople: Cordell Blaine will be the new chairperson for the Juniors with Deana Ashton assisting. Jenni Gudapadi will be the Field Trip Chairperson and Liz Warner will chair the ROLE program with Brent Stewart assisting. Debbie Mitchell will be the NFMS Chairperson and Dana Robinson will be Secretary.

Workshop Report: Brent went over the upcoming workshop dates. They are on the calendars as well.

Program Report: Terri Frostrom will be the new Program Chair. For the February program Brent will do a presentation on setting up an effective showcase. The case application is available on our website.

Old Business: Our club librarian has decided not to continue in the position, so we need someone to fill that position.

Show sign-up sheets are at the front table. There are still lots of time slots left to fill in most areas.

New Business: No new business.

Meeting was adjourned at 7:45 pm.

Brent awarded Rick with an engraved rock hammer that is given to each president.

Three members were awarded Lifetime Certificates. They are Don Nafus, Ilsa Schreiner and Coyote Short. Life members that were present were also recognized.

The Officers of the Gem Club were installed. Rick Corbett, President; Willa Renken, 1st Vice President; Terri Frostrom, 2nd Vice President; Teresa Nebeker, Treasurer; Dana Robinson, Secretary; Debbie Mitchell, Federation Director; and Jean Hoene, Historian. The 2024 Board Members are Deana Ashton, Brent Stewart, Jason Smith, Cordell Blaine and Liz Warner.

Brent reminded everyone of the dates for the upcoming show: February 24 and 25, with setup on February 23 at 8 am at Expo Idaho.

Respectfully submitted, Dana Robinson, Secretary

MINUTES OF THE IDAHO GEM CLUB BOARD MEETING FEBRUARY 6, 2024

Rick Corbett called the meeting to order at 7:02 pm.

Present: Rick Corbett, Deana Ashton, Willa Renken, Teresa Nebeker, Jason Smith, Liz Warner, Terri Frostrom, Cordell Blaine, Brent Stewart and Dana Robinson

Rick asked for any corrections to the minutes as printed in the *Grindings*. Willa made a motion to accept the minutes, which was seconded by Jason. Board members voted, motion carried.

Rick asked Dana to make reservations at the park for this year's picnics July 16 and August 20.

Treasurer Report: Teresa went over the financial statements for deposits and disbursements. There were more donations to the Link Fund. The NFMS dues have been paid, as well as the fee for the meeting space for the year. Tables have also been ordered for the show.

Program Report: Brent will be doing a program on case set-up for the February meeting. Deana can bring a case to use and Terri will help with set-up.

Junior's Report: Cordell passed around a calendar for the FRA badge program to show what they are planning to work on. He will submit information to be printed in the newsletter also.

Deana and Cordell will be doing a juniors Scavenger Hunt sheet for kids to do at the Gem Show.

Field Trip Report: Rick will be meeting with Jenni to make up a schedule for the year. Should have a list by show time.

Workshop Report: Brent went over upcoming workshop dates. The next ROLE workshop will be Feb. 19, 6-8:45 pm. The regular workshop will be Feb. 22, 6-8:45 pm. In March the ROLE workshops will be on Mar. 4 and Mar. 18, 6-8:45 pm. The regular March workshops will be on Mar. 21 from 6-8:45 pm, and Mar. 30 from 10 am-2 pm.

Old Business: Liz clarified the show chair positions. She will contact Angela about chairing the Merchandise table. She will send a request sheet to Dana to do an e-blast to the membership to help fill the sign-up sheets.

Rick still has 7 black light cases to fill. Willa was contacted by a vendor who would like 5 floor cases and 2 black light cases. That fills the regular floor cases.

New Business: Deana and Randy Squires are doing a Cheryl Link Memorial Scholarship Raffle at the show. The Hell's Canyon Club is donating items to raffle. It will be the usual price of \$1 each or \$5 for 6.

Tia Call will be taking over the Librarian duties from Cheryl Lawson.

Willa will be getting the parking passes for the back lot and Rick has received the case favors. Deana has volunteered to bring the donuts for the show set-up.

We need to print more membership applications. Changes to include removing "Refreshment Committee" and any other event we no longer do, and add boxes for "New" or "Renew". Print 5 pads of 100 sheets each.

Deana has been working on the License Plate project again. We may need to gather signatures to present to the legislature to get it going again. She has also received permission to use a special garnet cut called the "Idaho Cut".

Five new member applications were reviewed. Liz made a motion to accept all the new applications, Deana seconded, the board voted and the motion carried.

Meeting adjourned at 8:33 pm.

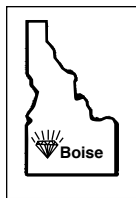
Respectfully submitted, Dana Robinson, Secretary

THE GRINDINGS

is the monthly newsletter of the Idaho Gem Club, Inc., associated with the Northwest Federation of Mineralogical Societies. Permission to copy is freely granted when proper credit is given to both the publication and the author. Articles without bylines are written by the Editor or President.

CHECK OUT THE CLUB WEBSITE!

www.idahogemclub.com



Idaho Gem Club, Inc.
P.O. Box 8443
Boise, Idaho 83707-2443

RETURN SERVICE REQUESTED

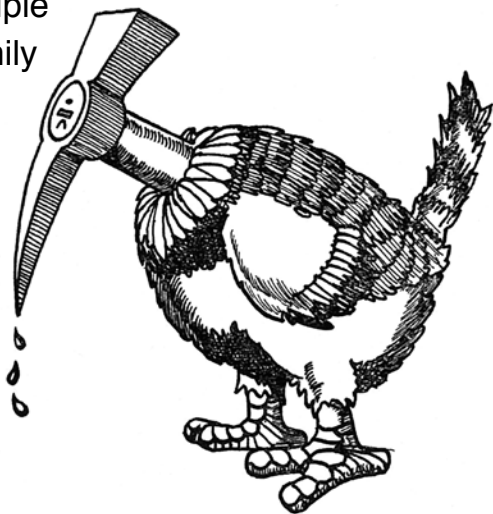
The purpose of the Idaho Gem Club is to promote mutual, educational and scientific interests and benefits of it's members in mineralogy, geology, gemology, the art of lapidary and kindred arts and sciences. Applications and/or renewals may be sent to the Idaho Gem Club, P.O. Box 8443, Boise, ID 83707-2443.

Dues:

\$22.00 individual
\$25.00 couple
\$28.00 family

Subscription only:

\$10 per year



GENERAL MEETING:

3rd Tuesday of every month: 7:00 p.m.

BOARD MEETING:

1st Tuesday of every month: 7:00 p.m.

ADDRESS:

Maple Grove Grange
11692 W. President Dr., Boise

