



# Grindings

*Idaho Gem Club, Inc.*

P.O. Box 8443  Boise, Idaho 83707-2443

VOL 83 NO 11

NOVEMBER 2022

## DIRECTORY

| ITEM  | PAGE |
|---|------|
| President's Message                         | 1    |
| Calendars, Upcoming Events                  | 2    |
| Field Trip Report, Workshops                | 3    |
| Board Nominee Biographies                   | 4    |
| Wire Wrapping Class, Sunshine Lady, Library | 5    |
| Citrine                                     | 6    |
| Moonstone                                   | 7    |
| Gem Show Signup, Contests                   | 8    |
| General Meeting Minutes                     | 10   |
| Board Meeting Minutes                       | 11   |

## PRESIDENT'S MESSAGE

Dear Members,

Hoping to see a big turnout for our meeting November 20th! It is Election Night for our club. Choosing the right leadership is essential! Idaho Gem Club, Inc. is YOUR club. It is important that you choose representatives who honor *your* wishes for club growth, encourage personal growth as lapidarists and hobbyists, and are reputable representatives for IGC.

In October the Election Committee comprised of Willa Renken, Cheryl Link, and Terri Frostrom began talking to members about running for the three Board of Directors positions that open every year. The term for a Board position is three years. The President must serve on the Board of Directors for at least one year, and is chosen by the board members at the December Board Meeting. The elected President then selects the 1st and 2nd Vice Presidents, Treasurer and Secretary. The President finds volunteers for positions of Librarian, Historian, Federation Director, Newsletter Editor, Sunshine Lady and Federation Director. Then Committee Chairmen are chosen from volunteers for the Annual Banquet, Mining Claims, Director of Youth Program and Field Trip Guide.

Our Annual Gem Show is a big responsibility and critical to the success of the club! The Annual Gem Show Committee is Brent Stewart and Willa Renken and they handle all business related to the show production, venue and dealer relations. The President assists by finding Chairpeople to manage the show activities and encouraging club participation and volunteerism.

Ideally, Board of Director members work harmoniously toward club goals developed by working alongside members sharing ideas. Officers who are engaged with members bring suggestions forth that help our club fulfill member needs. We have a fun and diverse group of adventurous, like-minded people. Consider this when voting. If you feel you can contribute positively to the leadership, please step up and throw your name onto the ballot once the floor opens for nominations.

Let me tell you my experience and why I am glad I am part of IGC. I had so much fun at my first Gem Show, I craved more! The people I met, the rocks I saw, the ideas... I wanted to learn more and spend time with interesting people doing rock stuff. I have been the Secretary, joined the Board of Directors in 2010 and served Sunshine Lady, License Plate Chairman, 2nd VP for 6 terms and have been President for two years. Also, the first year as President meant holding the club together through the global Covid 19 pandemic, when the world shut down all group activity. With your help we continued to comply and met for meetings, field trips and workshops, and Dana Robinson and I worked hard to provide activity and connection through the *Grindings* newsletter for that tough year! During my term as President our membership has grown to the largest membership total ever, our Juniors program has swelled to 80 members, we have become more involved with other AFMS Rock Clubs like Magic Valley, Challis, Salmon, Pocatello, and Lewiston and I helped get a little club off the ground in Grangville. I am also your Sunshine Lady who tends to the needs of members needing comfort and cheer through flowers and cards. In 2020, I encouraged Gerald Scarrow, to renovate his rock shop in Jerome. He was the Bruneau Mine owner. Because of Mandi Ayers and members like Carl Woodland, Jami and Jeb Hamilton we made it happen! At our Gem Show I created the Basket Raffle and The Treasure Dig. The Community response made this a top income source for show. The greatest achievement I've made with Idaho Gem Club was creating and building the IGC Facebook page in 2017. Mark Stevens handed me a blank group page and I built the page structure, added a moderator and have five administrators who approve memberships and page content. Several members keep posting interesting things. I spend 2 hours minimum daily on the fb page. Social media has helped us reach 5,000 group members! Our facebook page reaches so many facets of the gem industry! What I'm saying here is: Become an active member! I promise you, teaching kids about rocks and families bonding on field trips, or helping someone gain confidence learning skills will enrich your life. The opportunity is here! Make this club something you are proud of! It is a huge honor being President, a position I put my heart into and I hope to continue! Wishing each of you a Happy Thanksgiving Holiday!

*Respectfully Yours, Deana Ashton, President*

The deadline for issues is the Friday after each Board Meeting for the current month's edition. To submit articles, please send them through email to Dana Robinson, Editor [drobinso@boisestate.edu](mailto:drobinso@boisestate.edu)

## ACTIVITY CALENDAR

## NOVEMBER

| SUN | MON                              | TUE                           | WED | THU                         | FRI | SAT                                       |
|-----|----------------------------------|-------------------------------|-----|-----------------------------|-----|---|
|     |                                  | 1<br>Board Meeting<br>7 pm    | 2   | 3                           | 4   | 5   |
| 6   | 7<br>ROLE Workshop<br>6-8:45 pm  | 8                             | 9   | 10                          | 11  | 12  |
| 13  | 14                               | 15<br>General Meeting<br>6 pm | 16  | 17<br>Workshop<br>6-8:45 pm | 18  | 19<br>Marge Wire Wrap Class<br>10 am-2 pm |
| 20  | 21<br>ROLE Workshop<br>6-8:45 pm | 22                            | 23  | 24<br>Thanksgiving          | 25  | 26  |
| 27  | 28                               | 29                            | 30  |                             |     |   |

## DECEMBER

| SUN  | MON                              | TUE                           | WED | THU                         | FRI | SAT  |
|--|----------------------------------|-------------------------------|-----|-----------------------------|-----|--|
|  |                                  |                               |     | 1                           | 2   | 3  |
| 4  | 5<br>ROLE Workshop<br>6-8:45 pm  | 6<br>Board Meeting<br>7 pm    | 7   | 8                           | 9   | 10   |
| 11   | 12                               | 13                            | 14  | 15                          | 16  | 17<br>Workshop<br>Xmas Party<br>10 am-5 pm |
| 18<br>Workshop<br>Xmas Party<br>10 am-5 pm | 19<br>ROLE Workshop<br>6-8:45 pm | 20<br>General Meeting<br>6 pm | 21  | 22<br>Workshop<br>6-8:45 pm | 23  | 24   |
| 25<br>Christmas                            | 26                               | 27                            | 28  | 29                          | 30  | 31<br>Workshop<br>10 am-2 pm               |

## JANUARY

| SUN                 | MON                              | TUE                          | WED | THU                         | FRI | SAT                          |
|---------------------|----------------------------------|------------------------------|-----|-----------------------------|-----|------------------------------|
| 1<br>New Year's Day | 2<br>ROLE Workshop<br>6-8:45 pm  | 3<br>Board Meeting<br>7 pm   | 4   | 5                           | 6   | 7                            |
| 8                   | 9                                | 10                           | 11  | 12                          | 13  | 14                           |
| 15                  | 16<br>ROLE Workshop<br>6-8:45 pm | 17<br>Annual Banquet<br>6 pm | 18  | 19<br>Workshop<br>6-8:45 pm | 20  | 21                           |
| 22                  | 23                               | 24                           | 25  | 26                          | 27  | 28<br>Workshop<br>10 am-2 pm |
| 29                  | 30                               | 31                           |     |                             |     |                              |

## FEBRUARY

| SUN                                       | MON                              | TUE                           | WED | THU                               | FRI   | SAT                          |
|---|----------------------------------|-------------------------------|-----|-----------------------------------|---|------------------------------|
|   |                                  |                               | 1   | 2                                 | 3   | 4                            |
| 5   | 6<br>ROLE Workshop<br>6-8:45 pm  | 7<br>Board Meeting<br>7 pm    | 8   | 9                                 | 10  | 11                           |
| 12  | 13                               | 14                            | 15  | 16                                | 17  | 18                           |
| 19  | 20<br>ROLE Workshop<br>6-8:45 pm | 21<br>General Meeting<br>7 pm | 22  | 23<br>Load-up<br>Lockaway<br>1 pm | 24<br>Show Setup<br>8 am-Noon<br>Expo Idaho | 25<br>Gem Show<br>10 am-6 pm |
| 26<br>Gem Show<br>10 am-5 pm<br>Tear-Down | 27                               | 28                            |     |                                   |   | Workshop<br>10 am-2 pm       |



## Upcoming Events

**Lapidary Equipment Raffle**, from September 20. Tickets will be on sale at the general meetings.  
**Project of the Year Contest**, December 20.

**FIELD TRIP REPORT**

**Saturday October 22, 2022 Club Field Trip to Tony Funk's Rockyard in Gooding**

Guy DiTorrice, the Fossil Guy, was the Field Trip Leader. Guy met 5 vehicles with 12 rockhounds in Mountain Home and led them down to Gooding and the Idaho Rock Shop yard. Five other members met up there and the hunt was on.

It was a windy, rainy day, but everyone hit the piles and found a unique variety of rocks. Tony provided pulled pork sandwiches and they had a potluck lunch by a warm fire.

A Big THANK YOU to Guy DiTorrice for leading this trip and being part of our adventures! Thanks are due also to Tony and Chris Funk. Thank you!



**WORKSHOPS**

See the calendar for upcoming workshop dates! Come cut your rocks and learn cabochon making! Brent Stewart, Rick Corbett, and Liz Warner keep the club lapidary workshop operating year round.

Third Thursday of each month from 6:00 pm-8:45 pm  
Saturday the week after general meeting -- 10:00 am-2:00 pm

**WORKSHOP LOCATION**

2620 W. Idaho St., Boise, ID  
Next door to Stewart's Gem Shop  
\$5 Fee for each visit (kids free)



In addition complete the following 10 stones using the materials listed. Any size stone can be made from any of the listed materials, however each material and each size must be represented.

| SIZE         | MATERIAL  |
|--------------|---|
| 10 x 8 oval  | feldspar group, jade, jasper, malachite, onyx, opal, rhodonite, petrified wood, serpentine, tiger eye |
| 12 x 10 oval |   |
| 16 x 12 oval |   |
| dime round   | petrified wood  |
| penny        | jasper  |
| heart        | rhodonite   |
| cross        | opal  |
| keystone     | jade  |
| free form    | feldspar family   |
| square       | serpentine  |
|              | tiger-eye   |
|              | malachite   |
|              | onyx  |

Serpentine may be substituted with the following stones: howlite, fluorite or variscite.

Each stone must earn at least 85 points on the R.O.L.E. scale.

Sample cabs made for judging in the R.O.L.E. program.

## BOARD OF DIRECTORS ELECTION

The Nominating Committee has presented three nominees for the Board of Directors openings. At the time of election, additional nominations will be received from the floor as write-in candidates. The election of Directors will be by written ballot.

The newly elected Directors shall officially take office at the regular member banquet in January. New Directors will have no voting powers until after their installation. The election of the President will take place by the board members at the December board meeting.

Board members are required to attend monthly Board Meetings held on the first Tuesday of each month at 7:00 pm. This meeting lasts until about 8:30. All club financial and business decisions are discussed and voted on by the Board. The Directors usually contribute in other areas of the club as well.

## BOARD NOMINEE BIOGRAPHIES

### WILLA RENKEN

Fellow rockhounds. I am running for the Board of Directors and would like your vote at our November 15th meeting.

I have been involved with the Idaho Gem Club for 26 years and have served in a number of different positions. My first was Building Fund Chair, then Director on the Board, then President for 4 years, and then 1st Vice President after that. My main incentive is to see that our club remains the strong, family oriented, instructional beacon to those who seek the knowledge of rockhounding and the lapidary arts.

Through these 26 years I have been instrumental in seeing our club grow through the Annual Gem Show, it's auctions, workshops and the advancement of the youth program. My current project is to see that our process for setup and teardown of our Show is more streamlined. By moving us from the storage unit to trailers, the setup and teardown will take half the time.

My greatest desire is, and always will be, to see our club stay strong and carry forward with the goal of providing information and instruction in the lapidary arts. It is with these desires that I seek your support and vote in the upcoming elections.

Sincerely,  
Willa Renken

### CHERYL LINK

I was born and raised here in Boise as a fourth generation Idahoan. I have seen many changes to the Treasure Valley. I was introduced to the Idaho Gem Club by Charlie McCreath back in the early 1990's as we both served as Board of Directors for the Meadow Gold Dairy Credit Union. Charlie was the Audit Chairman and I served as the Secretary and later as the Treasurer for the credit union.

I have been a club member for over 20 years and enjoy a lifetime membership to the club. I have been active in the club as a past board member serving as first vice president for three years under Willa Renken, mining claim chairperson, silent auction chairperson for our show and, back in the day, I was the safety break chairperson.

I have helped out at the Christmas workshops helping the kids make Christmas presents for their parents and have attended many of the functions held by the club, from the Gem Fare for the last two years, Thunder Egg Days this year and the club show in February for the last 20+ years. I have substituted as the field trip leader on occasion when needed and don't mind helping out.

I would like very much to help out with the club in any capacity that I can on the board of directors as I believe in what the club was, is and can be in the future. I would appreciate it if you would consider me to renew my current position on the board of directors for the club – let's see where we can go from here....

### LIZ WARNER

I joined the Idaho Gem Club four years ago. I went to one of the lapidary workshops and learned how to make a plain slab of rock into a polished cabochon. I was hooked. The club offers great opportunities for rockhounds to learn the art of lapidary or to go on rock collecting field trips. I've participated in the club's Recognition of Lapidary Excellence program and achieved the Master level in making cabochons. I have been volunteering as a teacher and co-facilitator of the lapidary workshops for two years. I would like to join the Board of Directors and continue supporting the activities sponsored by the club.

## JEWELRY MAKING CLASS

### WIREWRAPPING RINGS, PENDANTS and MORE!

#### WIREWRAP CLASS WITH MARGE

NOV. 19, 2022, 10 am-2 pm

IGC Workshop — 2620 W Idaho

**Marge Conley, Lifetime Gem Club Member,  
Lapidary Artist and Wirewrap Instructor**

\$20.00 Class fee covers gold-filled or silver wire, we provide tools, and you can purchase a stone or bring a mostly flat stone or cabochon polished and ready to wire wrap. Marge will help you learn the basics and add your own flair! She has taught wire wrapping for IGC for decades! Her class size is limited, so come closer to 10:00 am and give yourself 1-1/2 hours to complete a project! Great opportunity to make jewelry and be taught by a pro!!

Marge teaches small private wirewrap classes in her home or other location. Get a few friends together and schedule with her by calling 208-375-8935.



## SUNSHINE LADY REPORT

By Deana Ashton

IGC Sunshine Lady sends cheerful greetings to club members needing , get well wishes, sympathy and anniversary expressions. If you know someone in need of cheer or attention, Please text or call Deana at 208-794-5628.

## IGC LIBRARY

Our Club Library will be open during the general meetings. Take a look at the books, magazines and videos available for check-out. Duplicate books from the library will be available for members to have.

If you have any books you would like to donate to the library, please contact Cheryl Lawson at [dizlyphalarope@gmail.com](mailto:dizlyphalarope@gmail.com). You may bring books to donate in a bag marked for Cheryl and leave it on top of the library cabinet.



## ANNUAL GEM SHOW SIGN-UP TIME

It is time to jump on board and participate in the show by signing up for the different events we have. There is a Wheel of Fortune, Garnet Dig, Grab Bag Sales, Basket Raffle, Silent Auction, Club Merchandise Sales, Scholarship Fundraiser Sales, Hospitality Table at the front door directing visitors, and Entry Ticket Sales that all need volunteers! We need to assemble a good crew for setting up the tables, Black Light Room, and Display Cases. Please get involved and help us out. This show is a regional favorite and we expect a big turnout. This is a fun way to learn more about rocks, meet fellow members and the community. Sign-up sheets will be available at meetings. You may also call the chairpeople to get added on the lists.

Our annual show will be held February 25 and 26, 2023 at Expo Idaho.

### Schedule:

Thursday, February 23 at Noon. Takes about 2 hours.

Load trucks at Lockaway Storage, Chinden Blvd. We will need helpers to line up and load the tables, framework, totes and silent auction rocks into the Uhaul.

Friday, February 24, 8:00 am to 6:00 pm. Expo Idaho

We need volunteers to unload the Uhaul and trailers, set up entire showplace, including display cases, dealer tables, blacklight room, demonstration area tables, and tables for the various Club Events. There is a need for people who can lift heavy items and also lighter work of installing lights, laying table skirting, staging display cases, running power cords and lighting for cases, assembling black light room and cases, loading each station with necessities, organizing Hostess tables and Door Prize/Drawings area, and hanging signs. Please plan on giving a few hours or more helping the club bring this fabulous Gem Show to life.

Members are encouraged to contact Cheryl Link to reserve a display case where you can show off anything rock related that you wish to the public! Youth and adult prizes awarded by public vote for case design. You may install your case during the afternoon on Friday. You must have the glass door fronts on and secured by Saturday's door opening at 10:00 am.

Saturday February 25 10:00am-6:00pm show is open. Need helpers at every station and full sign ups for 2 hour slots through event.

Sunday February 26 10:00 am-5:00 pm Show is open. All stations need full volunteer schedules.

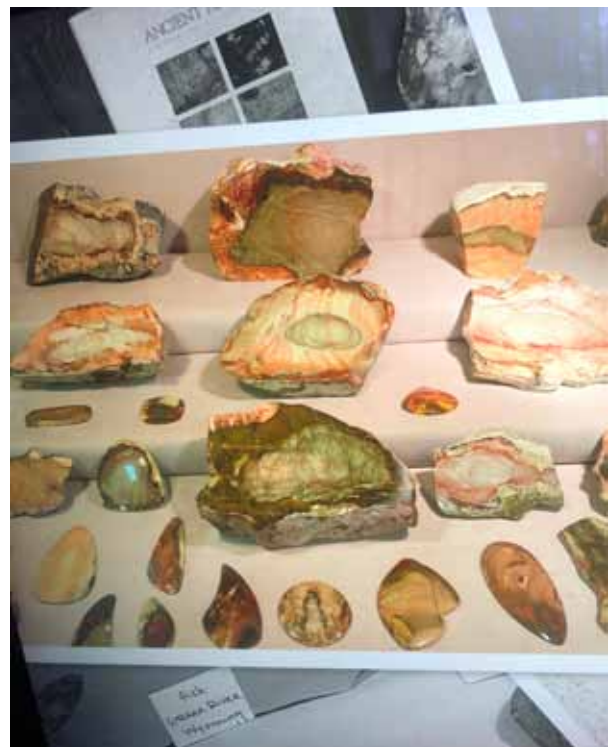
Sunday at 5:00 pm-8:00 pm is Show Tear Down. Volunteers needed to disassemble show and load everything back into trailers. We can't do it without you!

## PROJECT OF THE YEAR CONTEST

Every December, we hold a contest for projects members have made related to lapidary, jewelry, earth science, or geology. There are categories for Adults and Youth. The projects must be made by you, preferably made within the current year. There is a special showcase dedicated to display the winning entry during the Annual Gem Show. Your name is also added to a plaque displayed at the club workshop. Take advantage of upcoming workshops to create your project and feel free to ask members for help if you need it.

## GEM SHOW DISPLAY CASE CONTEST

The Annual Gem Show is coming up on February 25 and 26, 2023. Reserve a display case for regular or black light material. Come up with a good concept for your showcase and try to win! Ribbons will be given out and all visitors to the show can vote on all cases. There will be Adult and Youth Divisions. You may contact Cheryl Link, Showcase Chairperson, by emailing her at [clink@micron.com](mailto:clink@micron.com).



## CITRINE

**Citrine Meaning and History**

November's second birthstone, Citrine, is a variety of quartz that ranges from pale yellow to brownish orange in color due to a submicroscopic distribution of colloidal ferric hydroxide impurities. Citrine is prized for its charming yellow and orange hues. It takes its name from the Latin word *citrina*, which means yellow and is also the origin for the name for citron fruit because of these lemon-inspired shades. Topaz and citrine look very similar, but are unrelated minerals.



Citrine was first appreciated as a golden-yellow gemstone in Greece between 300 and 150 BC, during the Hellenistic Age. Prior to that it was used to decorate jewelry and tools but it was not highly sought after.

Citrine has been a popular gemstone since ancient times and has shared a history of mistaken identities with topaz. As a result, people thought citrine had the same powers as topaz. They believed the citrine birthstone could soothe tempers and calm the wearer. The ancient Greeks carved rock crystal ornaments that glistened like permafrost. Roman pontiffs wore rings set with massive purple amethysts, and citrine has been reported in Roman jewelry. It was particularly popular in colorful Scottish jewelry from the Victorian era. Citrine is given for the thirteenth wedding anniversary. Today, most of the citrine in the marketplace results from the heat treatment of amethyst.

Citrine is abundant and affordably priced, even in large sizes, which means everyone can find a way to fit citrine into their budget. It is also known to have calming energies, while bringing fortune and warmth to the wearer. Citrine has been referred to as the "merchant's stone" or "money stone", due to a superstition that it would bring prosperity.

It is nearly impossible to differentiate between cut citrine and yellow topaz visually, but they differ in hardness. Topaz is harder than citrine at 8 on the Mohs scale while Citrine is only 7. Brazil is the leading producer of citrine, with much of its production coming from the state of Rio Grande do Sul. Sometimes citrine and amethyst can be found together in the same crystal, which is then referred to as ametrine. The Anahi mine in Bolivia produces this unique



combination. The citrine birthstones produced at the Anahi mine typically range from orange-yellow to brownish/greenish yellow.

**Where Is Citrine Found?**

The top sources for citrine are Bolivia, Spain, Madagascar, Mexico and Uruguay. Amethyst that's typically heat treated to a citrine color is mined mostly in Brazil.

**Healing Properties**

Citrine brings not just prosperity and success for the business or personal powers in career but it also has other characteristics which help people know themselves deeply when it comes to self development. It creates deeper connections within your core to improve self-esteem, self-confidence, self-trust, and get out the negativity inside you, and produces personal power. Citrine produces positive energy that helps your mood become lighter. Like drinking a cold lemonade on a sunny day, it brings refreshments into your body. So if you feel like you're on a low energy kind of day, this crystal is perfect for you.

It also has the power of transforming negativity into positive energy giving you the calmness of a feeling and balancing your emotions. Citrine helps the digestive system to calm down and functions accordingly with your body system as it is working as a moderator crystal. It refreshes the brain and builds it up intellectually.

**Citrine Birthstone Care & Cleaning**

Your citrine stone is usually durable enough for normal wear and care. It can be safely cleaned with warm, soapy water. While it is usually okay to clean your citrine in an ultrasonic machine, steam cleaning is risky since high heat could cause the stone to crack.



## MOONSTONE (aka HECATOLITE)

Moonstone is a sodium potassium aluminum silicate of the feldspar group that displays a pearly and opalescent schiller. An alternative name is *hecatolite*. It is an opalescent stone that ranges from colorless to pink, peach, yellow, gray, brown, green and blue. And the clarity can go from translucent to transparent.

The name *moonstone* derives from the stone's characteristic visual effect, called adularescence (or schiller), which produces a milky, bluish interior light. This effect is caused by light diffraction through alternating layers of orthoclase and albite within the stone. The diffracted light varies from white to blue, depending on the thinness of the albite layers. Polished moonstones often display chatoyancy ("cat's eye" effect), where a luminous streak appears through the stone. Asterism is rare and produces four-legged stars.

### Geology

The most common moonstone is of the orthoclase feldspar mineral *adularia*, named for an early mining site near Mt. Adular in Switzerland. A solid solution of the plagioclase feldspar oligoclase +/- the potassium feldspar orthoclase also produces moonstone specimens.

Deposits of moonstone occur in Armenia (mainly from Lake Sevan), Australia, the Austrian Alps, Mexico, Madagascar, Myanmar, Norway, Poland, India, Sri Lanka, and the US. As I was looking online for information, I came across photos from Moonstone Beach in California. The Sierra Pelona Rock Club has taken field trips there.



Historically, the most valuable, transparent moonstones with strong blue sheen came from Myanmar. The most prized moonstone crystals today are those from Sri Lanka with a strong blue color. They are the highest valued variety due to their rarity and can only be found in Sri Lanka. Meanwhile, India is famed for its rainbow moonstones.

### In Culture

Moonstone has been used in jewelry for millennia, including ancient civilizations. The Romans admired moonstone, as they believed it was derived from solidified rays of the Moon. Both the Romans and Greeks associated moonstone with their lunar deities. In more recent history, moonstone became popular during the Art Nouveau period; French goldsmith René Lalique and many others created a large quantity of jewelry using this stone.



The moonstone is also the Florida State Gemstone; it was designated as such in 1970 to commemorate the Moon landings. However, it does not naturally occur in the state.

### Moonstone Meanings and Properties

The moonstone crystal is linked with our ancient attraction with the moon. With it, you can unlock the inner goddess which exists deep within your spirit. And it helps in channeling a brilliant white illumination of moonbeams on your pathway to harmony and balance.

Legendarily known as the "Traveler's Stone," the moonstone crystal is particularly protective of those who travel by night or upon waters when the moon is shining. Frequent travelers can keep this stone for safe night driving as well as protection against accidents.

As a professional supporting stone, moonstone crystals can help artists and dancers in their self-expression, inspire executives and help educators in sharing activities. It also helps enhance the self-expression of waitresses and waiters as well as promoting sensitivity in secretaries and psychologists.





## GEM CLUB OFFICERS

PRESIDENT: Deana Ashton, 208-794-5628  
gemdigger2014@outlook.com

1st VP: Willa Renken, 208-362-3941  
wlr\_dkr@msn.com

2nd VP: Cheryl Link, 208-859-5098  
clink@micron.com

SECRETARY: Dana Robinson, 208-345-3823  
drobinso@boisestate.edu

TREASURER: Teresa Nebeker  
208-890-4500, nebekert1@msn.com

FEDERATION DIRECTOR: Randy Harrison,  
208-342-2320  
haveharleywilltravel4u@gmail.com

FIELD TRIP GUIDES: Robert Garner and  
Desiree Bradley, 661-998-7333,  
cat\_eyes86@msn.com

HISTORIAN: Cheryl Peterson  
208-887-5363, cpete4421@gmail.com

LIBRARIAN: Cheryl Lawson  
208-995-6219, dizzyphalarope@gmail.com

SUNSHINE LADY: Deana Ashton  
208-794-5628, gemdigger2014@outlook.com

GRINDINGS EDITOR: Dana Robinson  
208-345-3823, drobinso@boisestate.edu

## BOARD MEMBERS:

Brent Stewart, 208-863-9336  
gene@stewartsgemshopinc.com

Ed Moser, 208-340-8060  
ed.moser15@gmail.com

Rick Corbett, 208-890-2599

Jason Smith, 208-899-3899  
sunshineandwine101@gmail.com

Terri Frostrom, 208-407-2405  
s\_tfrostrom@hotmail.com

Dana Robinson, 208-345-3823  
drobinso@boisestate.edu

WEBSITE: www.idahogemclub.com

EMAIL: info@idahogemclub.com

## MINUTES OF THE IDAHO GEM CLUB GENERAL MEETING OCTOBER 18, 2022

Meeting called to order at 7:10 by Deana Ashton. The Pledge of Allegiance was recited and 11 new members introduced themselves.

Rick drew winning door prize tickets for 2 juniors and 11 adults.

Deana asked for any corrections to the minutes as printed in the *Grindings*. Willa made a motion to accept the minutes, Terri seconded, the membership voted and the motion carried.

**Secretary Report:** No report.

**Treasurer Report:** Teresa went over the financial statements, expenses and deposits.

**Library Report:** Cheryl Lawson explained that she has cleaned out and reorganized the Library. She will have old books and duplicates to give out at the next meeting. She wants to add a specific jasper picture book that Larry Ridley has. We need a new geology book that is more up-to-date and kid's geology books. Coyote suggested some from the Mining Museum. She also sent over the check-out procedure for the new members.

**Workshop Report:** Liz Warner did an introduction to the workshop for the new members. The next workshop is on Thursday, Oct. 20 from 6:45-8 pm, and Saturday, Oct. 29 from 10 am-2 pm. She also went over the ROLE program classes and reminded us slabs are available at the workshop to use.

**Field Trip Report:** We need a new chairperson to lead field trips next year. We would also like to hear suggestions from the members. Where would you like to go next year?

This month an additional field trip will be to Tony Funk's Idaho Rock Shop in Gooding on Oct. 22. We will meet at the Mountain Home Chevron, Exit 90 off I84 at 8 am, leaving at 8:30 to caravan to Gooding. There will be a pot luck lunch with Tony providing pulled pork for sandwiches.

**Program:** Phil's program on fluorescence had to be postponed due to his work schedule. Coyote stepped up to show details and a list of fluorescent minerals. There will be an auction of fluorescent minerals after the meeting.

**Old Business:** Deana went over the prizes for the Grab Bag and Tumbling contests. The club has lots of rock if you need tumbling material.

The rock sale of the Belknap Donation went very well. About 3/4 of the material was sold to benefit the Scholarship Fund.

Deana invited members to submit designs for a new poster for our Gem Show in 2023. One member has graphic design students that she likes to give real work marketing projects to, so that will be additional submissions.

The Show signup sheets are in the back. Deana went over the different stations, and all are needing volunteers. Come participate! Twila went over the Wheel of Fortune prizes and asked for any donations of small items.

The auction of the equipment will be in progress until the December meeting, so there are still opportunities to buy raffle tickets!

Willa's next Silversmithing class will start on Oct. 27th. It will be the last class until next May.

Meeting was adjourned at 8:0 pm for the auction.

*Respectfully submitted, Dana Robinson, Secretary*

## MINUTES OF THE IDAHO GEM CLUB BOARD MEETING NOVEMBER 1, 2022

Deana Ashton called the meeting to order at 7:00 pm.

**Present:** Deana Ashton, Teresa Nebeker, Ed Moser, Rick Corbett, Willa Renken, Terri Frostrom, Brent Stewart, and Dana Robinson

**Absent:** Cheryl Link, Jason Smith

**Guest:** Sandy Blodgett, Cheryl Lawson

Deana asked for any corrections to the minutes as printed in the *Grindings*. Ed made a motion to accept the minutes, which was seconded by Terri. Board members voted, motion carried.

**Secretary Report:** No report.

**Treasurer Report:** Teresa went over the financial statements. She also presented a list of dealers that have made payments for show space. She also received a donation of \$120 from Deana and Facebook.

**Library Report:** Cheryl has completed the Library inventory and sent it to the board members. She asks that we check it for typos, etc. She also has a new box of books to add to the list. We will give away duplicates to club members and the magazines will go to the Silent Auction table at the show.

**Field Trip Report:** Guy DiTorrice was kind enough to lead 10 cars down to Tony's shop. Everyone had a good time. Tony is also selling a 500 lb. rock tumbler if anyone is feeling strong!

**Workshop Report:** Brent reported we do have a window AC unit for next summer. The metal for the saw room roof has been ordered and Robert has a friend to help him install.

Brent made a couple of changes to the calendar. The next workshops are on Nov. 17th from 6-8:45 pm, but then the usual Saturday workshop on Nov. 26th has been cancelled as it is the Thanksgiving holiday weekend. The ROLE workshop listed as Nov. 14th on the calendar will be moved to the 21st (3rd Monday). The December workshops will remain the same as the regular schedule.

**Banquet Report:** Terri reported back after contacting the Elks Club and they are not large enough for our group. They said they always use the Cottonwood Grill for their banquets. Terri passed out the menu sheets and there is a nice Dinner Buffet choice. Beef and chicken will be the main selections. Should check on having 2 or 3 vegetarian rigatoni dishes available. It was decided to order several dessert selections with each one coming in two-dozen count. There will be a no-host bar for drinks. The cost will be \$18 for members.

Willa made a motion to have the Banquet at Cottonwood Grill with Terri as chairperson. Dana seconded, the board voted and the motion carried. Dana will get tickets made for sale at the next meeting.

**Election Committee Report:** Willa reported that Ed wants to step down from his position, but she and Cheryl Link would like to continue on the board. Liz Warner is the new candidate for the board. All board members should be at the December meeting to select a president.

**Old Business:** No old business.

**New Business:** Deana has had questions about restarting the Refreshment Committee. After discussion it was decided to ask the membership if they are willing to participate.

Deana also asked about closing the divider wall to give the juniors their own area for meetings. Also we should set up a table to sell building fund items.

Ed thanked the Board for all the help he's gotten over the years.

2 new member applications were reviewed. Ed made a motion to accept the new applications, Dana seconded, the board voted and the motion carried.

Meeting adjourned at 8:30 pm.

*Respectfully submitted, Dana Robinson, Secretary*



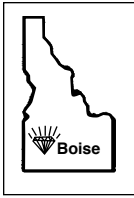
*Moore Family field trip, circa 1960s*

### THE GRINDINGS

is the monthly newsletter of the Idaho Gem Club, Inc., associated with the Northwest Federation of Mineralogical Societies. Permission to copy is freely granted when proper credit is given to both the publication and the author.

Articles without bylines are written by the Editor or President.

CHECK OUT THE CLUB WEBSITE!  
[www.idahogemclub.com](http://www.idahogemclub.com)



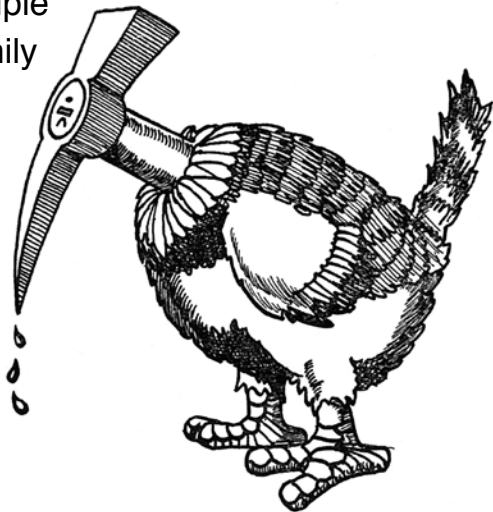
Idaho Gem Club, Inc.  
 P.O. Box 8443  
 Boise, Idaho 83707-2443

RETURN SERVICE REQUESTED

The purpose of the Idaho Gem Club is to promote mutual, educational and scientific interests and benefits of it's members in mineralogy, geology, gemology, the art of lapidary and kindred arts and sciences. Applications and/or renewals may be sent to the Idaho Gem Club, P.O. Box 8443, Boise, ID 83707-2443.

**Dues:**  
 \$22.00 individual  
 \$25.00 couple  
 \$28.00 family

**Subscription only:**  
 \$10 per year



**GENERAL MEETING:**  
 3rd Tuesday of every month: 7:00 p.m.

**BOARD MEETING:**  
 1st Tuesday of every month: 7:00 p.m.

**ADDRESS:**  
 Maple Grove Grange  
 11692 W. President Dr., Boise

