




Grindings

Idaho Gem Club, Inc.

P.O. Box 8443  Boise, Idaho 83707-2443

VOL 81 NO 4

APRIL 2020

DIRECTORY

ITEM	PAGE
President's Message	1
Calendars, Events	2
Field Trips	3
Cullen Anderson	4
Earthquake	5
Extra Links	6
Kids' Activities	7-10
Member Businesses	11
Nephrite Jade	12
Meeting Minutes	13
Federation Director Report	14-15

PRESIDENT'S MESSAGE

Greetings Rockhounds!

This edition of *The Grindings* is intended to provide a lift of spirits during self-isolation due to the COVID-19 pandemic. Our editor, Dana Robinson and I have collaborated and hope to share some useful links, ideas and resources to keep you busy while at home. At this time, we have cancelled all meetings and activities until April 30th. I hope we will all be ready to see what our historic March 31st 6.5 earthquake shook up in our collecting areas! Let's all stay well and healthy and get through this month!

Thank you, Dana Robinson for the really nice editions of *The Grindings* this year! I know the time you put into each issue and truly appreciate your dedication. This issue we feature a Director of our Board and our former Field Trip Chairman, who is also a respected RN Manager at St. Luke's Hospital. Cullen Anderson, thank you for your service to the community and Idaho Gem Club. See his story inside. He's a gem!

Inside there is a list of a few of our members' lapidary businesses. They are local, so maybe you can get some new material to work on while at home! For businesses that are not listed, let us know who you are! Did you know that for \$10 a month, you can reach your target audience and have your business ad in *The Grindings*? One of my goals is to have a directory of our members' lapidary specialty businesses linked on our club website or Facebook page. First, we need to know who you are! Contact Dana Robinson or Deana Ashton with your information or questions about *The Grindings* advertising. Or volunteer to help create a Club Business Directory!

This is a great time to organize and sort your collected materials. Idaho Gem Club accepts donations of rocks, slabs, collections, metalworking, silversmithing, jewelry findings, lapidary tools and equipment, and provides you a donation receipt for tax purposes. These donations are recorded into the IGC Inventory List. Donated materials have several purposes that they can be used for: the Juniors Program, Building Fund drawings, Workshop material, etc. We really need to gather great rocks for the Silent Auction at our 2021 show. If you have donations, please call me and I can meet you at the Gem Club storage unit, record the donated items, and give you a receipt. Call 208-794-5628 for making arrangements to meet me and drop off your donation. Your generosity is appreciated!

Check out the Youth Project Contest to occupy kids during April! Details inside. Remember Project of the Year needs junior entries, too!

Special thank you to Ilse Schreiner, Don Nafus and Robert Murphey for leading us to the Whangdoodle and Queenstone claims and the Bruneau Wood Pile. The social distancing was in place and attendees had a good time just before the stay-at-home order was put in place. Remember, these are Idaho Gem Club's oldest claims, so please, respect the claim rules and Rockhounding Code of Ethics when you visit. This way they remain in good shape for decades to come. We are looking for a few new Field Trip Leaders for 2020. Please call me if you can lead our group to one of our listed destinations. Can't wait to see you all again and get back to rockin' together!

Respectfully submitted, Deana Ashton, President

The deadline for issues is the Friday after each Board Meeting for the current month's edition. To submit articles, please send them through email to Dana Robinson, Editor drobinso@boisestate.edu

ACTIVITY CALENDAR

APRIL

SUN	MON	TUE	WED	THU	FRI	SAT
			1	2	3	4
5	6 ROLE Workshop 6-8:45 pm	7 Board Meeting 7 pm	8	9	10 NFMS Annual Meeting, Ogden 9am-6pm	11 NFMS Annual Show, Ogden 10am-6pm
12 NFMS Annual Show, Ogden 10am-4pm	13	14	15	16	17	18 OGMS Field Trip Big Egg Claim
19	20	21 General Meeting 7:30 pm	22	23 Workshop 6-8:45 pm	24	25
26 Field Trip Graveyard Point Meet 8:00 am	27	28	29	30		

MAY

SUN	MON	TUE	WED	THU	FRI	SAT
					1	2 Workshop 10 am-2 pm
3	4 ROLE Workshop 6-8:45 pm	5 Board Meeting 7 pm	6	7	8	9 Field Trip Reynolds Creek TBA
10	11	12	13	14	15	16
17	18	19 General Meeting 7:30 pm	20	21 Workshop 6-8:45 pm	22	23 OGMS Field Trip Rockville Leaf Fossils
24 31 Field Trip Emerald Ck. Meet 8:30 am	25	26	27	28	29	30 Workshop 10 am-2 pm

JUNE

SUN	MON	TUE	WED	THU	FRI	SAT
	1 ROLE Workshop 6-8:45 pm	2 Board Meeting 7 pm	3	4	5	6
7	8	9	10	11	12	13
14	15	16 General Meeting 7 pm	17	18 Workshop 6-8:45 pm	19 Rocky Mtn. Fed. Gem Show Big Piney, WY	20 Rocky Mtn. Fed. Gem Show Big Piney, WY
21 Field Trip Queenstone, Gem Show Big Piney, WY	22	23	24	25	26	27 Workshop 10 am-2 pm
28	29	30				

CAN YOU HELP?

Web Design and Social Media: Are you a web designer, social media blogger, or proficient at Facebook Group Administration features? We would like to update and improve our Facebook page by adding content. We are searching for someone who can create new posts daily, respond to inquiries, manage membership requests, and maintain a harmonious, respectful and positive thread of discussion. Please contact Deana Ashton, 208-794-5628, Willa Renken, 208-362-3941, or Phil Neuhoft, 208-939-4508.

Photographers: Any pictures you have of club events, please share! It is important that we create a yearbook annually for the club. Do you have skills and creative ability? Please let Dana Robinson, editor, or Deana Ashton know you are interested in helping out. Dana is retired now, and I'd like to make her job easier producing the newsletter. Suggest ideas for content or offer to write a column. To submit articles, notices or photos for *The Grindings* newsletter, email them to Dana Robinson at drobinso@boisestate.edu or you can contact her at 208-345-3823.

This is YOUR Gem Club! Make it "THE CLUB" you are proud to belong to. Your ideas and suggestions are welcome for any area we can improve on or implement. We share one of the most intriguing and exciting hobbies. Discovering cool rocks and making custom jewelry from something you literally find in the earth is a total thrill! Seeing generations of a family out digging in the dirt on field trips is evidence that we are living right. Sharing and bonding with friends and family is what generates happiness and good stuff that we all need more of.

Pizza Party

The Pizza Party has been postponed until such time as the restaurants are allowed to open and social distancing measures have been relaxed. Check back in our May newsletter.

WORKSHOP LOCATION

2620 W. Idaho St., Boise, ID
Next door to Stewart's Gem Shop

\$5 Fee for each visit (kids free)



IDAHO GEM CLUB MEMBER FIELD TRIPS

Our field trip day is the 3rd Sunday of each month with additional trips on other weekends. The 3rd Saturday is the Owyhee Gem & Mineral Society Field Trip day. This year, you may go to OGMS and IGC trips. At the time of this printing the state is under social distancing and stay-at-home orders. Hopefully things will be better by the first part of May and we can get out for some rockhounding. Club members will be notified when new information is available.

March 21	OGMS Bruneau Wood Pile - Petrified Wood
MARCH 22	A.M. WHANGDOODLE OPAL CLAIM with Greg Sandmeyer and Sandy Blodgett P.M. QUEENSTONE JASPER CLAIMS
April 10,11,12	Ogden, UT, Federation Meeting and Show Topaz Mountain & Dinosaur Park
April 18	OGMS Big Egg Claim - Geodes
APRIL 25	GRAVEYARD POINT CLEANUP DAY
APRIL 26	GRAVEYARD POINT and special tour of collection spots (6 sites) with Sandy Blodgett
MAY 9	REYNOLDS CREEK with Cathy Parsons
May 23	OGMS Rockville Leaf Fossils and Maple Ridge Petrified Wood
MAY 23,24,25	MEMORIAL DAY WEEKEND EMERALD CREEK GARNETS - There is a fee of \$5 per child (6-12), \$15 per adult Northern Idaho - Overnight camping trip - Site reopening May 22 after being closed during 2019
MAY 23,24,25	MACKAY - CHALLIS with Greg Sandmeyer Overnight camping trip - variety of minerals, crystals, white fortification agate
JUNE 6,7	BEACON HILL with Willa and Doug Renken Both Saturday and Sunday, camping optional
JUNE 13,14	HAMPTON BUTTE with Cathy Parsons in Oregon, 4 hr drive for Green Petrified Wood - Overnight camping trip
JUNE 18-21	FEDERATION TRIP TO BLUE FOREST Big Piney, WY, Blue Petrified Wood, Fish Fossils Overnight trip - camping Thurs/Fri/Sat
JULY 4,5	4TH OF JULY WEEKEND Spencer Opal Mine, East Idaho, Overnight camping trip, cookout with Hayes family
July 18	OGMS A.M. Pink Plume Agate Claim P.M. Haystack Butte Petrified Wood and Jasper
JULY 19	SUCCOR CREEK - Thundereggs
August 22	OGMS Wagontown - Bog Wood
AUGUST 23	SOUTH MOUNTAIN - Ilavite/Hedenburgite/Crystals with Greg Sandmeyer
SEPTEMBER 5,6,7	LABOR DAY WEEKEND SUNSTONE CLAIMS in Plush OR with Cheryl Link - Camping on claim or nearby
September 19	OGMS Blue Egg Claim
SEPTEMBER 20	GLASS BUTTES - NEED A GUIDE!
OCTOBER 17-18	TEXAS SPRINGS - Jackpot, NV Pink Limbcasts and Fluorescent Geodes - Overnight camping trip or lodging in Jackpot
October 24	OGMS Graveyard Point

Field Trip Guides/Committee Chairpersons:

Greg Sandmeyer, 208-345-1997

Deana Ashton, 208-794-5628

Cathy Parsons, 208-957-9938

OGMS Leader: Robert Murphey, 208-590-1848

NOTE: Need volunteers to lead some trips this season. Let Deana know if you'd like to help guide a trip or two.

Thank You!

CULLEN ANDERSON

As we all isolate and practice social distancing, at least one member of our club is hard at work on the front lines for St. Luke's. THANKS CULLEN. We are so grateful for all of the people who are helping keep us safe. We hope you stay safe and well, too!



Nurse manager Cullen Anderson, RN, screens people in a line of cars waiting to be tested for coronavirus COVID-19 at a drive-thru testing station at St. Luke's Meridian Medical Center Tuesday.

A NOTE FROM CULLEN

As you know, we are in a rather unprecedented time caused by this pandemic. This has been a great lesson to us all that our interactions with one another have significant impacts in many ways. This virus spreads easily, lives on surfaces, and is proving to be detrimental to older adults and those with existing medical conditions. One way you can look out for your fellow human is to obey the stay at home order for our state at this time. Wash your hands well and frequently, wipe down the surfaces of your home and workplace, and if you are sick in any way, keep yourself physically away from others. If you have symptoms of fever, cough, or shortness of breath, gastrointestinal symptoms, or have been exposed to someone positive for COVID-19, please take care of yourself well. Consider getting testing and definitely quarantine yourself at home unless you require medical attention. Have others get supplies for you. Even if you are not sick, if you need to go out for essential work or supplies, please remember the 6 foot social distancing rule. The other important way you can look out for one another is to stay connected virtually via the many ways our technology allows. We still need to have connection with each other and many are dealing with high anxiety, stress, and loneliness through all this. Perhaps you can share photos of your rough or polished material on social media or just send a thoughtful text to a fellow member. Stay safe and be well, friends!

-Cullen Anderson, RN and IGC Member

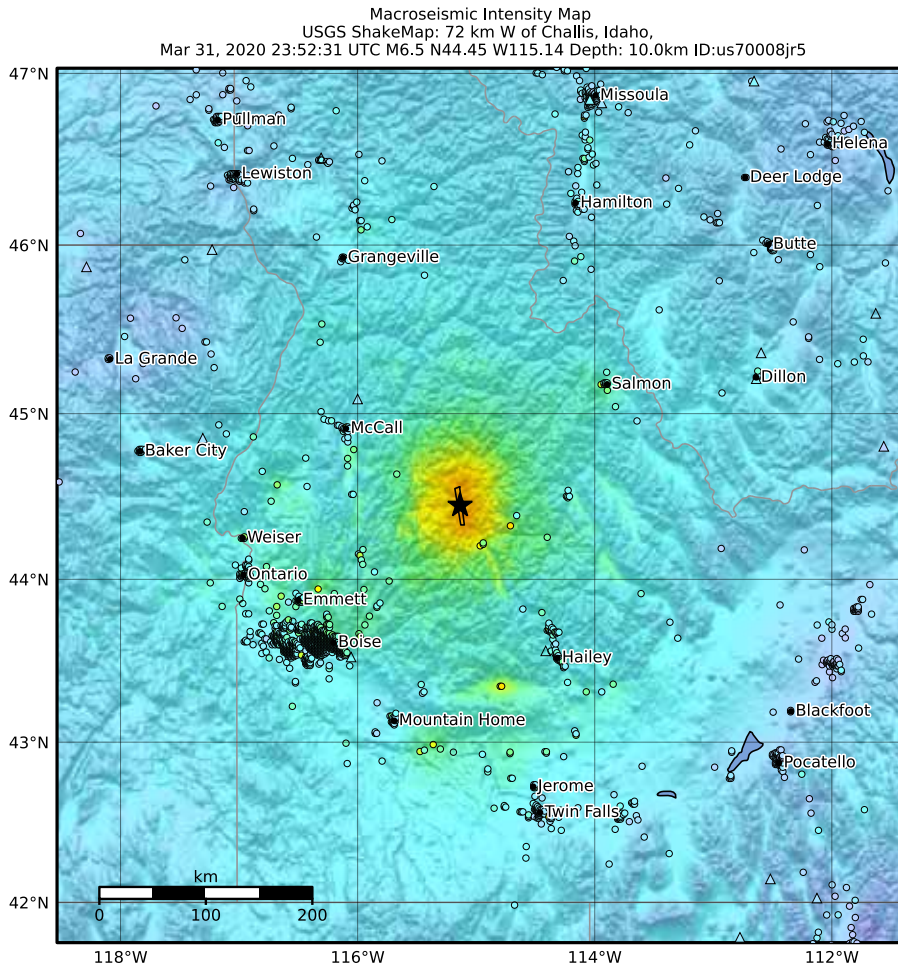


Darin Oswald, The Idaho Statesman

ROCK AND ROLL!

Well, if you were tired of the news, Mother Nature gave us a new story for the day. Hopefully everyone came through unscathed. It did seem different than the Challis quake from 1983. According to the USGS, the main earthquake measured 6.5 on the richter scale and lasted for 20-30 seconds. The epicenter was about halfway between Cascade and Challis and originated at a depth of 6.2 miles. There have been about 60 aftershocks, most of which have been around magnitude 3. There was damage to some buildings, as well as cracked sidewalks and driveways. It also caused rocks to fall onto many roads, including Highway 21 north of Lowman near Grandjean. The road is closed for clean-up. See the graphic for more detailed information.

At my house the pole for hanging plants in the greenhouse came out of its attachment. It won't go back in because I can't move the wall out again. Not sure what I will do about it! I'll probably have to remove the attachment and start over.



What To Do in an Earthquake

1. DROP, COVER and HOLD ON. Get under a sturdy table or desk and hold on to it until the shaking stops.
2. Stay away from glass, windows, outside doors and walls, and anything that could fall, such as light fixtures or tall bookshelves. Stand against a wall near the center of the building or stand in a doorway.
3. Use a doorway for shelter only if it's close by and if you know the doorway is strongly supported (in some buildings it may not be, especially newer ones).
4. Stay in bed if you're there when the quake strikes. Hold on and cover your head with a pillow . . . unless you're near a window, mirror or under a heavy light fixture that could fall.
5. Stay inside until the shaking or rolling stops and you are sure it's safe to go outside.
6. If you are outside stay in an open space away from power lines or anything that might fall (chimneys, light poles, etc.)

SHAKING	Not felt	Weak	Light	Moderate	Strong	Very strong	Severe	Violent	Extreme
DAMAGE	None	None	None	Moderate	Light	Moderate	Moderate/heavy	Heavy	Very heavy
PGA(%g)	<0.0464	0.297	2.76	6.2	11.5	21.5	40.1	74.7	>139
PGV(cm/s)	<0.0215	0.135	1.41	4.65	9.64	20	41.4	85.8	>178
INTENSITY	I	II-III	IV	V	VI	VII	VIII	IX	X+

Scale based on Worden et al. (2012) Version 12: Processed 2020-04-01T18:32:25Z
 Δ Seismic Instrument ○ Reported Intensity ★ Epicenter □ Rupture



Idaho Department of Transportation

EXTRA LINKS

Linda Barlow forwarded an email from Greg Durocher of the Chugach Gem and Mineral Society. March 27th was the anniversary of the Great Alaska Earthquake and Tsunami in 1964. The included links are below for those that do not receive email.

<https://earthquake.usgs.gov/earthquakes/events/alaska1964/>

<https://pubs.usgs.gov/fs/2014/3018/pdf/fs2014-3018.pdf>

<http://www.youtube.com/watch?v=jvl-4IWjHXo&list=UUeXH8GZyV3sVqAr45AvupOA>

Robin Solt sent links to musical instruments you might enjoy. The first two are real “rock music”.

Petoskey Stone Lithophone: <https://www.youtube.com/watch?v=YnNoba3WSOc>

Lithophone in Vietnam: https://www.youtube.com/watch?v=trTDTcixA_c

Mbira: https://www.youtube.com/watch?v=Z3b1bz_9gEo

Giant Tubulum: <https://www.youtube.com/watch?v=OZJNEF6iBNE>

Celeste Dance of the Sugar Plum Fairy: <https://www.youtube.com/watch?v=mW3dQvv1A7Y>

“Dance of the Sugar Plum Fairy” on the Glass Armonica: <https://www.youtube.com/watch?v=eQemvvyJ--g>

Erhu Instrument: <https://www.youtube.com/watch?v=YJ2O7vQfeiE>

Guzheng Instrument: <https://www.youtube.com/watch?v=ujzMHLac404>

Hang drum: <https://www.youtube.com/watch?v=xk3BvNLeNgw>

Another interesting link from Robin and forwarded by Linda:

<http://www.livescience.com/ancient-rainforest-antarctica.html>

Tony Griffin also found an excellent list of minerals in Malheur County relatively near the Owyhee Reservoir:

<https://www.mindat.org/feature-5727000.html>

Deana Ashton shared this link for Idaho gemstones:

<https://geology.com/gemstones/states/idaho.shtml>



GEMOLOGY FOR KIDS: GAMES AND ACTIVITIES

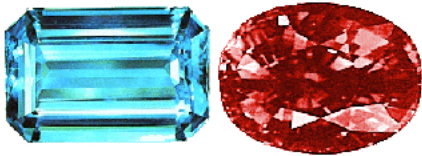
[Home](#) » [Learning Center](#) » [Gemology](#) » [The Lighter Side of Gemology](#) » [Gemology For Kids: Games And Activities](#)

by [International Gem Society](#)

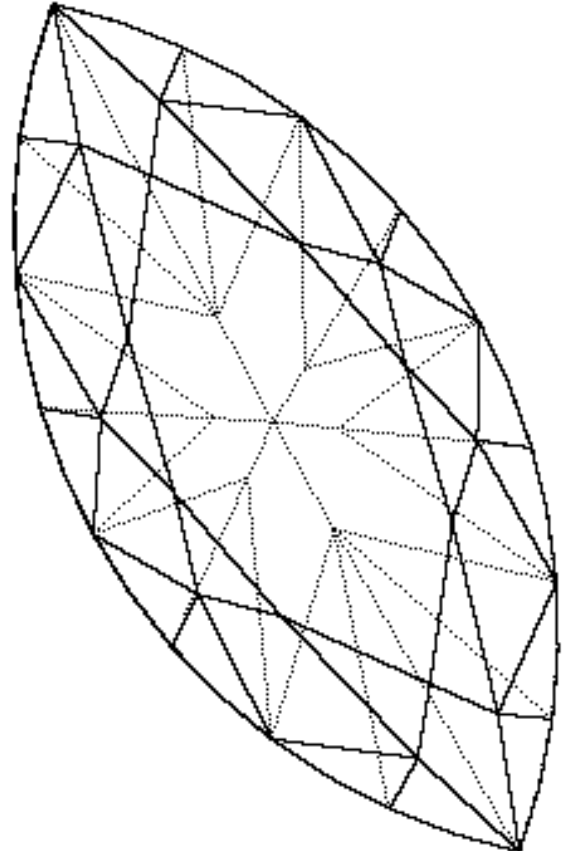
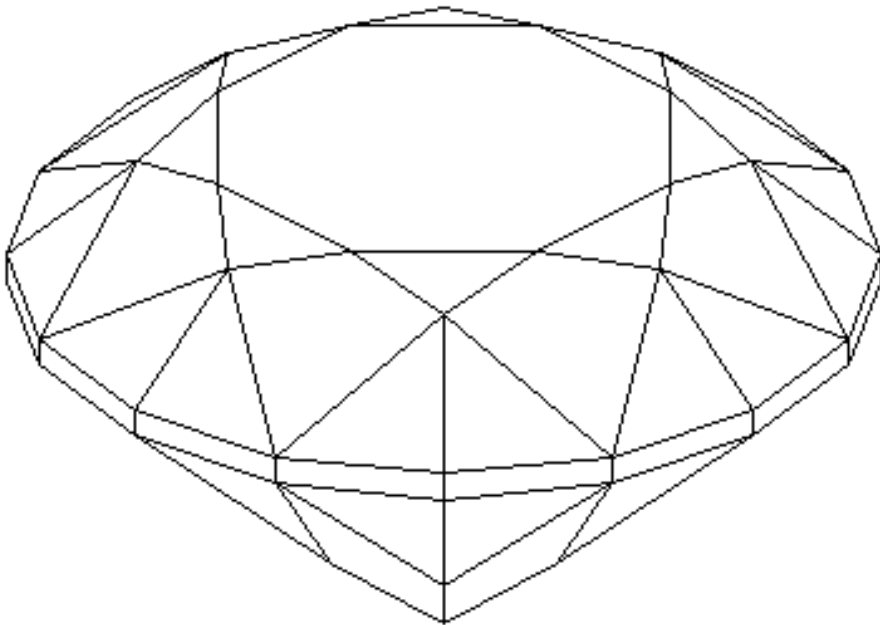
Make gemology for kids educational and fun with these gemstone-themed games and activities. Print this entire article or just the games you want.

Gemology For Kids: Fun With Colors

The colors and play of light on faceted gems are appealing to young and old alike. Little gemologists will enjoy trying to capture these dazzling effects with crayons. Show them how faceted gems aren't always a single color but can show many shades and flashes of light instead.



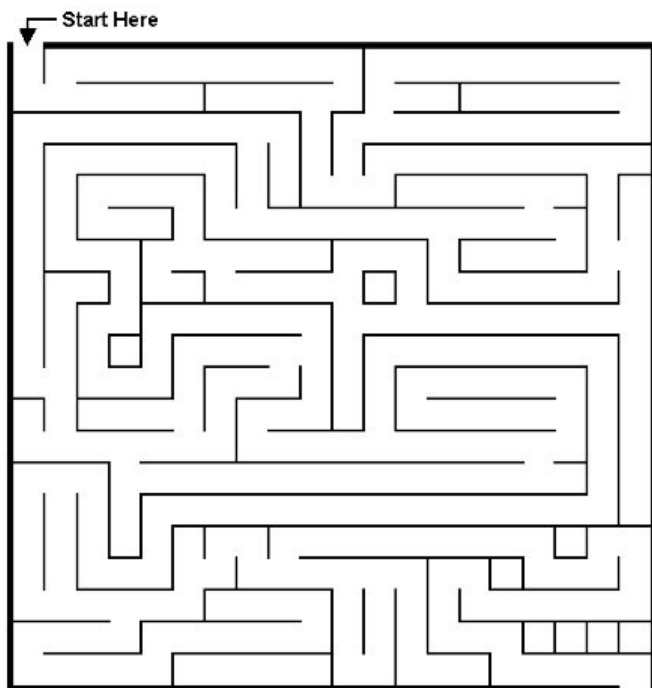
Print as many of these outlines as you like and let kids color these stones as if they were purple amethyst, light blue aquamarine, green emerald, dark blue sapphire, and red ruby.



Gemology For Kids: Mom Lost Her Earring!

Encourage your budding jeweler to examine your favorite pieces carefully.

After working hard all day, Mom lost her earring. Can you backtrack to where she lost it



Gemology For Kids: Word Games

These puzzles are perfect for challenging kids who are taking a more serious interest in gemology. Let them use the [International Gem Society website](#) or another gemology reference work to help them figure out these clues.

Fill in the answers to the clues in the spaces provided. The first letter of each answer spells out the name of a well-known gemstone.

Gemstone #1

- 1) A shade of blue is named after this gem _____
- 2) This gem known for flashes of colors _____
- 3) A lime green gem _____
- 4) Fossilized tree sap _____
- 5) In blue, it is a birthstone _____

Put the first letter of each answer here: _____

1 2 3 4 5

Gemstone #2

Instructions: Fill in the words that go with the description. The first letters of the word spell out a common gem.

- 1) Very high luster _____
- 2) A hollow stone lined with crystals _____
- 3) A straight line through the center of a figure or solid _____
- 4) A prong setting that holds a gem high above the ring shank, named for the jeweler who invented it _____
- 5) A stone with a water-filled cavity _____

Gemology For Kids: Chocolate Chip Mining

For a fun activity for a group of children, try this party game created by Giovanna. You can set the amount of playing time, starting money, the prices for mines and tools, the value of the chocolate chips, and penalty fees you think are appropriate for your group.

Chocolate chip mining is a hoot. It's a contest that teaches kids how a mine operates and functions on an economic level. Everyone starts with an equal amount of play money that they use to "buy" a mine and tools.

The mines consist of a variety of chocolate chip cookies. The idea is to buy a mine, or cookie, with as many gems, or chocolate chips, as possible. Of course, some brands cost more than others. Players also purchase their mining tools, various things to dig into the cookies like toothpicks, unbent paperclips, etc.. These also have different prices.

Now the fun begins. The players trace the outlines of their cookies on a napkin or paper plate. When the signal is given, they carve out of their cookie as many of the chocolate chips as possible. (Some kids dig out individual chips. Others just pulverize the cookie).

When the signal is given to stop mining, all the cookie crumbs (not the chocolate chips) must be inside the original cookie outline (as per EPA requirements ;^). Stray crumbs will cost the mine operator! Next, each player weighs their chocolate chips on a gram scale and is paid money according to the weight of the chips, minus any penalty fees for stray crumbs. Of course, the player with the most money wins.

AGATE	TOPAZ
5) Enhydro	5) Zircon
4) Tiffany	4) Amber
3) Axis	3) Peridot
2) Geode	2) Opal
1) Adamantine	1) Turquoise
GEMSTONE #2	GEMSTONE #1

ANSWERS:

JUNIORS' CONTEST

The Idaho Gem Club has a contest for you to do while families are staying at home during April. Create something unique with the rocks in your collection. Prizes will be awarded to all participants!

Here are a few ideas:

1. Make a shoe box scene using a variety of rocks and materials. Using a variety of your rocks, arrange them and glue them in place. Petrified wood slivers make trees, green rocks can look like grass or leaves, slabs can make nice picture backgrounds, too!
2. Using an egg carton, make a labeled rock collection with the name of the rock specimen and where it was found. Using the internet you can research the rocks you find.
3. Rock and mineral testing kits can be made by researching the Mohs Hardness Scale information online. To make a test kit, you will need a piece of glass or tile, a copper coin, a steel file, a piece of quartz and a nail. This is a great science lesson and you will gain a lot from this experience!
4. Pet Rock Projects:

Make a pet rock using river stones glued together to make a head and body. Add google eyes, feathers, paint, anything you find to give your pet rock a unique identity. It can be as simple or as complex as you want to make it.

Name your pet rock and build it a home. Shoe boxes or empty containers can be painted or covered with gift wrap paper. Now you can customize its home and decorate the inside. Have fun!

Create a story about your pet rock and tell where it came from and what your pet rock likes to do.

Describe an adventure it had, places it has been and where it wants to go on vacation.

***Note:** If you need craft materials, the club has seashells, pipe cleaners, google eyes, pom poms, feathers, etc. that you may request. Deana has small metal figurines of people, trains, dinosaurs, horses and castles that she will share! She can text you a photo of the figurines she has so you can create your project, adding them in once the quarantine is lifted. Contact Deana Ashton via text at 208-794-5628.

Once the Gem Club activities and meetings may take place again, we would like you to bring your projects to the first General Meeting and share what you have created! Prizes will be awarded to all who enter a project!

Remember: The Western Idaho Fair is coming in August. You can enter these projects in the Fair and try to win a ribbon! There are several divisions to enter. Many members enter their wire wrapped pendants. We have a great number of silversmith student projects made by members in the classes offered. Let's make a club effort and have a lot of entries in the Western Idaho Fair! We are ambassadors representing Idaho, The Gem State!



This is Steve. He is 50 years old and was born in Sun Valley, Idaho



MEMBER BUSINESSES

With so many of our regular shows and events cancelled this year, we wanted to help our members any way we could. Featured here are some of our members' businesses that have material available. You can contact them for new material to work while you are stuck at home.

Rock Flat Minerals

We specialize in gemstone rough (including our gem hunt bags), gem crystal specimens, zeolites and related minerals from the Northwest and beyond, fluorescent minerals, and fossils. Our inventory is diverse, so if you want something, we likely have it.

Contact Phil Neuhoff at
<https://www.facebook.com/rockflatminerals/>,
 email pneuhoff@yahoo.com, or call 352-524-0724.

Nature's Treasures, LLC

I create collector display pieces and slabs. I provide high-quality hand-picked display pieces (freeforms, geodes, palmstones, etc.) with an emphasis on Labradorite, Jaspers and Agates. Prices are very reasonable and I have plenty of slabs for sale, along with thousands of pounds of rough rock.

Contact Jonathan Barnett at
naturallyrockin@gmail.com

Silver Streams Northwest

Founded in 2000 by Steve and Kathie Schultz, Silver Streams Northwest grew from a hobby. Steve grew up exploring the Owyhee Mountains of Eastern Oregon and Western Idaho with his family. "Rockhounding" was in his blood from an early age. Collecting rocks led to cutting and polishing stones, which led to silver and gold smithing. We currently own and operate the following mines: Cripple Creek Picture Jasper, HiddenValley Jasper, Northridge Plume Agate, Moonshine Jasper, as well as other various jaspers and agates.

Contact us at www.silverstreams.com
 or steve.kathie@hotmail.com

**Stewart's Gem Shop**

A family owned business since 1945.

Located in beautiful Boise, Idaho, we specialize in the Idaho Star Garnet but we also carry an assortment of fine jewelry, rough and polished gems, stones and minerals. We also carry an assortment of tools and equipment for those rockhounds looking to mine, cut and polish their own stones, minerals and gems.

Contact us at stewartsgemshopinc.com
 or 208-342-1151

Palisade Gems

Palisade Green Obsidian, lapidary equipment.
 Contact Jim or Belle Witt at 208-890-8035

Willa and Doug Renken

Custom Silversmithing and Faceting
 Silversmithing Classes
 208-362-3941

Robert Coggins

Faceted Gems
 208-353-0825

Jason and Camilla Roys

Mt. Antero Aquamarine
 1-720-434-1663

Jason Smith Designs

Custom Silversmithing
 208-899-3899

Rare Rocks and Gems

Philip Stephenson
 See gallery at www.rarerocksandgems.com

JDM Silvery

Dick and Judy Morris, Buhl, ID
 Prudent Man Agate
 208-543-8869

Need to Bead

Sabra Haney
 Jewelry findings, beads, wirewrap supplies
 208-384-0404

Rocks and Gifts

Gerald Scarrow, 942 S. Lincoln Ave., Jerome, ID
 Specializing in Bruneau Jasper

NEPHRITE JADE

Submitted by Willa Renken

An Introduction to the Jade West Group

There are more than 50 nephrite occurrences in British Columbia (Simandl et al., 2000 Ogden mine article), all distributed along the Cordilleran belt that extends from Alaska to California at irregular intervals along the continent's margins (Leaming, 1995). This belt includes different regions of oceanic origin that contain the rocks necessary for green nephrite formation. These regions became part of the continent during subduction that occurred in the Mesozoic (Davis et al., 1978).

Until the 1960s, almost all of the nephrite produced in British Columbia came from secondary deposits. With the rapid expansion of amateur lapidary activity after World War II, production in British Columbia's jade fields picked up and they became the most important suppliers. About the same time, markets opened up in Germany and the Orient. Mining activity gradually depleted the secondary deposits, but increasing values led to further exploration. These efforts uncovered primary deposits adjacent to the Fraser River area in southern British Columbia, the Mount Ogden area in central British Columbia, and the Cassiar jade fields in the far north. Today, British Columbia is the main supplier for the China market.

Jade West Group, founded in 1981, is the biggest player in green nephrite mining and trading in British Columbia. Kirk Makepeace, the company's founder, is an avid promoter of the stone. He started with a summer job as a jade driller. This involved flying into remote areas and spending summers in tents, with supplies brought by small planes every two weeks. Carrying drills in a backpack, he hiked the countryside in search of jade boulders. He drilled cores from them to determine potential quality. About three out of 100 boulders he drilled were of marketable quality.

More than thirty years later, Jade West has become one of the world's leading producers and exporters of green nephrite jade. The company owns and operates three out of the four active nephrite mines in British Columbia, including the famous Polar Mine near Dease Lake, and the Kutcho and Ogden Mountain mines. The Polar Mine's high-quality production is known as Polar Jade in the trade.

Nephrite mining in British Columbia is very challenging. Winters are long and harshly cold, and deposits are remote, so mining can only happen during the short summer season,

about 60 days a year. Almost all of the secondary deposits are exhausted, so current mining is almost all from primary deposits. Transporting the heavy equipment to the mining sites is backbreaking work.

Jade West uses diamond-coated circular and wire saws and modern high-pressure hydraulic splitters to remove the nephrite from the mountain and saw it into pieces of a manageable size. Nephrite's excellent toughness makes it extremely difficult to break out of the rock. While blasting had been used in the past, Jade West no longer uses explosives.

Nephrite deposits range from 12 inches to 12 feet wide. The wider deposits are very challenging to quarry. Nephrite boulders on the surface sometimes reach weights of 200 tons and are rarely under 100 pounds, but Jade West tries to limit the weight of its boulders to five tons, which is a reasonable size for them to mine, handle, and transport on trucks to the nearest town, about 100 miles away. The average weight is two tons, a size that satisfies most of the carving factories in China.

Sophisticated exploration techniques and an understanding of the area's geology are the keys to successful mining operations and lengthening of a mine's productive life. Jade West Group invests a lot of capital in its exploration projects. The company adopted core drilling in 1975, and it's still their most powerful and reliable exploration tool. They drill into the mountain with water-cooled diamond-tipped drills, then extract the cores and examine them to determine if the nephrite is of suitable quality to turn into a marketable finished product. Since the mining season is short, the miners must call on a great deal of experience when determining the areas from which they will take core samples.

Kirk Makepeace predicts a promising future for nephrite mining in British Columbia. His nephrite business involves his entire family. The most important factor, in his opinion, is the growing appreciation for nephrite and the growing desire to keep rough prices high enough to offset the increasing cost of mining. Although environmental regulations for mining gemstones are getting stricter, he does not see them as a challenge for his operation.

Do a search on Facebook, for more information on Jade West Mining. By likening their site, you will be able to follow their mining and marketing operations. Also, search for Jade West Matt as he offers this material for sale.

BOARD OF DIRECTORS

PRESIDENT: Deana Ashton, 208-794-5628
gemdigger2014@outlook.com

1st VP: Willa Renken, 208-362-3941
wlr_dkr@msn.com

2nd VP: Brent Stewart, 208-863-9336
gene@stewartsgemshopinc.com

SECRETARY: Gia Stewart, 208-703-0740
eilersg@yahoo.com

TREASURER: Teresa Nebeker
208-890-4500, nebekert1@msn.com

NFMS DIRECTOR: Linda Barlow
208-724-3309, barlow596@gmail.com

HISTORIAN: Cheryl Peterson
208-887-5363, cpete4421@gmail.com

SUNSHINE LADY: Deana Ashton
208-794-5628, gemdigger2014@outlook.com

GRINDINGS EDITOR: Dana Robinson
208-345-3823, drobinso@boisestate.edu

BOARD MEMBERS:

Cheryl Peterson, 208-887-5363
cpete4421@gmail.com

Cheryl Link, 208-863-9336
clink@micron.com

Cullen Anderson, 208-412-6822
cullenanderson@hotmail.com

Rick Corbett, 208-383-0040

Ed Moser, 208-340-8060
ed.moser15@gmail.com

Sandy Blodgett, 208-859-4080

WEBSITE: www.idahogemclub.com

EMAIL: info@idahogemclub.com

MINUTES OF THE IDAHO GEM CLUB GENERAL MEETING MARCH 17, 2020

Meeting called to order at 7:25 pm.

Due to the current COVID considerations, social distancing was observed for the meeting. Sparse attendance made it easy.

New Members & Guests: 27 attendees altogether and 3 new families.

Deana asked for any corrections to the minutes of last month's meeting as printed in the Grindings. Willa made a motion to accept the minutes as amended, seconded by Rick Payne. Members voted, motion passed.

Secretary Report by Gia Stewart: Have new Rock & Gem magazine in Library.

Workshop Report by Brent Stewart: Workshops cancelled until further notice.

Field Trip Report: The field trip for this month will be to the Queenstone and Whangdoodle claims. The question of whether to cancel was brought up. Deana emphasized to members that the decision was up to them. A vote was taken, those in favor of having the field trip were 26 for and 0 against. Information was given out about meeting place and tools needed for the new folks.

Old Business: Pizza Party postponed until the end of April. The NFMS meeting and show in Ogden has also been cancelled.

New Business: Beginning in May, I'd like to hold a Rock Swap Meet where members can barter and trade with each other. Once our meetings are back on schedule, we can do this in the church parking lot a few hours before the general meeting.

Meeting was adjourned at 8:19 p.m. STAY SAFE!

Respectfully submitted, Gia Stewart, Secretary



MINUTES OF THE IDAHO GEM CLUB BOARD MEETING APRIL 7, 2020

ALL MEETINGS CANCELLED FOR APRIL

FEDERATION DIRECTOR REPORT

APRIL 7, 2020

By Linda Barlow
IGC Federation Director

NFMS

COVID-19 CLOSES SOCIETIES' SHOWS including NFMS annual show at Golden Spike Gem & Mineral Society in Ogden, UT, on April 10-12, due to Utah restricting assembly of persons over 60 years old and groups more than 20 in size. See NFMS Newsletter for details, articles, and cancelled shows.

NFMS President: Ken Zahn plans bare-bones NFMS meeting to accomplish Officer Elections and other required annual business. Scheduled for late summer or early fall.

1ST VP: Beth Heesacker encourages everyone to STAY SAFE and PROTECTED.

2ND VP: Larry Hulstrom inspires us to heed the words of government officials and look after your loved ones and neighbors and help where you can.

ROY CHAIR: Laurie Ellis cites Denise Harrison's article describing Clackamette Mineral & Gem Club ROY, Marjorie Bush.

HISTORIAN: Linda Barlow quotes *The Mineraologist* from April 1943 by H. C. Dake, "Security In Hobby" describing how to use rockhounding for economic security.

NOMINATING COMMITTEE CHAIRPERSON: Ronna Watkins presents Darrell Coyle for his dedication to the hobby as nominee for 2nd VP.

NORTHWEST ROCKHOUND RETREAT: Walt Butler, chairperson, announces September Annual Rockhound Retreat at OMSI – Camp Hancock, at John Day Fossil Beds National Monument. He gives notice of rules for those attending. Registration can be found in the newsletter.

Ore-Rock-On DVD Rockhounding Guide NEW Version 7. A comprehensive guide for finding lapidary rock, minerals, and fossils in all of Oregon, Washington, Idaho, Montana, and Northern California with maps (topo, land ownership regions detailed), google earth files, detailed descriptions of dig sites. For use with any internet browser. <http://OreRockOn.cm/CD.htm>.

ALAA

ALAA OREGON STATE DIRECTOR: Jennifer Haley writes about important BLM information for all Federations. BLM central office is moving to Grand Junction, CO, from Washington, DC.

ALAA encourages all clubs/societies to create a display case of local rocks, gems, minerals, and fossils from closed collecting sites to be shown at your annual shows due to public land regulation. Include information of closed sites with photos and notation of the collection site – print in your local newsletter, NFMS newsletter, and also send the information to ALAA and AFMS newsletters.

ALAA President: Shirley Leeson writes an encouraging letter for all rockhounds to take safety and health precautions. ALAA Newsletter January-March 2020 at www.amlands.org.

1. First teleconference, Jan. 17, 2020, from Quartzsite, AZ. Business meeting updated bylaws, changed annual meeting to Quartzsite in January, elected Directors and Officers, and approved 2020 budget.
2. Congressman Gosar, Quartzsite representative, answered questions on public land issues.
3. Nevada OHV registration site: OHV.NV.GOV
4. Provided field trip Journal for Public Lands blank forms.
5. Hampton Remediation Project.
6. Recreational Rockhounding as defined in the United States Code of Federal Regulations: 43 CFR (this is electronic code of federal regulations) 8365.1-5 Property and resources. e-CFR data is current as of October 18, 2019.
7. NAS Fallon Range Training Complex Modernizations Final Environmental Impact Statement can be found at www.frtcmodernization.com. The Navy wants over 600,000 acres from Dixie Valley to a couple miles north of Gabbs, NV, which closes off areas to the Native Americans' sacred sites and puts 15 areas of potential environmental impact mitigation. The Nevada legislature approved two resolutions opposing this land grab.
8. Davis Creek, NV, changes include no obsidian mining for 2020 season for both commercial and recreational purposes. Free uses authorizations are not permits to collect obsidian. Encouraged users of public lands to monitor Forest Service FB and Twitter sites and alert appropriate people of announcements and activity.

AFMS MARCH (www.amfed.org)

PUBLICATIONS CHAIR: B. Jay Bowman encourages everyone to Read the Rule Book for competitive exhibiting.

UNIFORM RULES COMMITTEE: Leslie Weyment discusses how to select what subdivision to enter for your competitive display from the Rule Book. How do you understand the rules? Section I has definitions in Part I and Part II for the committee and judges. Sections II discusses the divisions, each sections' rules, the subdivisions with their specific rules, and the classes to choose from.

ROCKHOUND SOAPBOX: John Martin, AFMS Conservation and Legislation Committee, discusses Quartzsite history (this is very interesting).

AFMS JUNIORS PROGRAM CHAIR, Jim Brace-Thompson: Ventura Gem & Mineral Society comes up with novel idea for interest to juniors by creating a writing experience by drawing pictures, creating outlines, and writing about any rock experience they have had!

AFMS BULLETIN EDITOR'S HALL OF FAME by Shirley Leeson. Contact her to honor editors from Southeast Federation, Eastern Federation, or Midwest Federation. It gets rotated each year.

AFMS BEAC by Mark Nelson: Editors receive help by joining S.C.R.I.B.E.

JUDGES TRAINING SEMINAR for April cancelled: Planned for October 15 and 16th with practice October 18th at Knoxville, TN, with AFMS Annual Show. Contact Margaret Kolaszyk, Registrar, at markolaczyk@gmail.com.

ROY CHAIR by Judi Allison: NFMS Cascade Mineralogical Society nominates Mark Hohn club ROY.

AFMS APRIL

AFMS PRESIDENT, David Wayment, teaches at William Holland in Young Harris, GA, at end of May.

AFMS SAFETY CHAIR, Ellery Borow, encourages safety by reading and following manufacturer's instructions on all tools, supplies, and equipment. Safety (1) is easier than trying to fit it in later, (2) can often be far less expensive in the long run, (3) can build confidence that later things will go well, (4) can reassure your insurers, (5) can make what we do better, (6) shows that one cares about oneself, family, neighbors, others, (7) makes safety become more automatic, and (8) makes you and the whole hobby safer.

NAMES BADGES CHAIR by Rick Kennedy, SCVGMS, via Frank Mullaney: "Jargon Alert" shouted out by anyone at local meeting alerts the speaker to pause and explain the unknown term leading to better understanding and fosters better rockhound local club community. Nephytes may not know "Leaverite" terminology and may be insulted by this language!

AFMS JUNIOR PROGRAM CHAIR by Jim Brace-Thompson: Encourages all clubs using the Future Rockhounds of America Badge program to contact him for any revisions you want considered for the Fifth Edition of the Badge Manual. He is looking for YouTube videos and other free sources of multimedia to provide links.

ALL ROCKHOUNDS AND FRIENDS by Mark Nelson: **Historic Petroglyph Stolen from El Paseo Mountains.** The Sunburst Petroglyph near Ridgecrest, CA. The BLM Ridgecrest Field Office, (706) 384-5400, is offering a \$1,000 reward for information leading to the arrest and conviction of those responsible for stealing the petroglyph. **Call WeTip at 1-800-782-7463.**

AFMS PROGRAM COMPETITION CHAIR, by Darrell Watkins: The purpose of this competition is to recognize and reward authors of presentations about the Earth Sciences and Lapidary Arts and to make winning programs available to affiliated clubs across the country. Monetary prizes with national recognition. See www.amfed.org for entry form and details.

AFMS HISTORIAN by Jennifer Haley: see https://www.youtube.com/watch?v=B0uU_PPTz6kk for "rockhound" commercials during Super Bowl (101 million viewers) and Oscars (23.6 million viewers)!!! It showed the famous selenite cave in Naica, Chihuahua, Mexico, with people exploring the cave.

EMAIL NOTICES SENT TO MEMBERS THIS MONTH:

1. Forest Service Terminates Sequoia Trail Volunteers from Idaho Recreational Council.
2. Federal Document on Salmon is "Profoundly inept" from IWF.
3. ALAA Message from President Shirley Lesson.
4. Owyhee County News Release from Idaho Recreational Council.
5. Mini-Miner Monthly Newsletter and several rock games from Diamond Dan Publications.
6. Chugach Gem & Mineral Society Newsletter with several sites for information for rockhounds.
7. Web Sites from Robin Solt, Idaho Gem Club member, for rockhounds to enjoy while staying at home!

See the NFMS on Facebook

<https://www.facebook.com/groups/NFMS1>

(for the desktop/laptop/tablets)

<https://m.facebook.com/groups/NFMS1>

REMEMBER TO BRING YOUR STAMPS
TO THE GENERAL MEETING
TO HELP FIGHT CANCER.
MANY THANKS TO ALL WHO
HAVE CONTRIUTED.

**Two links
for additional newsletters we
receive as members of the rock club.**

NFMS – Newsletter available at:

<http://northwestfederation.org>

AFMS – Newsletter available at:

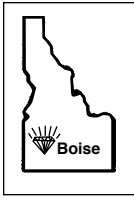
<http://amfed.org/news/default.htm>

THE GRINDINGS

is the monthly newsletter of the Idaho Gem Club, Inc., associated with the Northwest Federation of Mineralogical Societies. Permission to copy is freely granted when proper credit is given to both the publication and the author.

Articles without bylines are written by the Editor or President.

CHECK OUT THE CLUB WEBSITE!
www.idahogemclub.com



P.O. Box 8443
Boise, Idaho 83707-2443

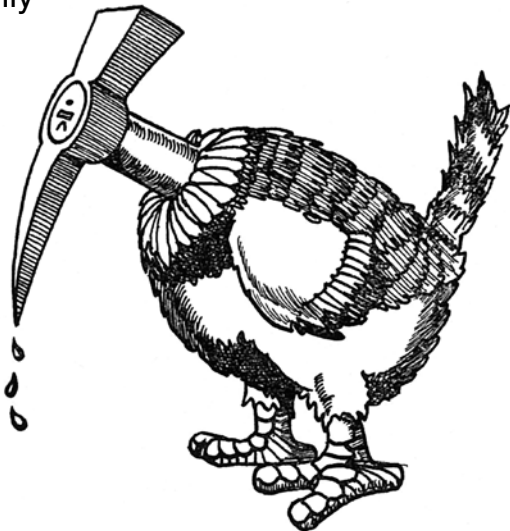
The purpose of the Idaho Gem Club is to promote mutual, educational and scientific interests and benefits of it's members in mineralogy, geology, gemology, the art of lapidary and kindred arts and sciences

Dues:

- \$22.00 individual
- \$25.00 couple
- \$28.00 family

Subscription only:

\$10 per year



GENERAL MEETING:

3rd Tuesday of every month: 7:00 p.m.

BOARD MEETING:

1st Tuesday of every month: 7:00 p.m.

ADDRESS:

Church of the Brethren

