

Grindings

Idaho Gem Club, Inc.

P.O. Box 8443  Boise, Idaho 83707-2443

VOL 76 NO 10

October 2016

President's Message

BOARD OF DIRECTORS

PRESIDENT

Dana Robinson
208-345-3823
drobinso@boisestate.edu

1st VICE PRESIDENT

Willa Renken
208-362-3941
wlr_dkr@msn.com

2nd VICE PRESIDENT

Deana Ashton
208-794-5628
gemdigger2014@outlook.com

SECRETARY

Christina Anderton
208-514-6902
cah.cuepoc@live.com

TREASURER

Barbara Wanner
208-794-9424
bwanner2@yahoo.com

NFMS DIRECTOR/ GRINDINGS EDITOR

Linda Barlow
208-724-3309
barlow596@gmail.com

BOARD MEMBERS:

David Douglas
208-559-7216
douglas.dm@gmail.com
Cheryl Peterson
208-887-5363
cpete4421@gmail.com
Brent Stewart
208-863-9336
gene@stewartsgemshopin.com
Ed Moser
208-340-8060
ed.moser15@gmail.com
Twila Gallaher
208-853-6703
tkgboise@cableone.net
Sandy Blodgett
208-859-4080

Club Website
www.idahogemclub.com

October is here and it is Dues month. I started early last month to get everyone thinking about it. Please send them in as soon as you can to keep your membership current. And it is also getting close to the time to be thinking about the Project of the Year, coming in December, just two short months away. This also includes the juniors. Keep thinking about things you can make from your summer finds.

The field trip season has come to an end. The trip last month to Beacon Hill was a great success. Thank you Doug for leading us out this trip. We had a great turnout and there were also about 17 people from Washington who joined us, as well. Most were from a club in Walla Walla, but one gentleman had traveled from Tacoma. Everyone was finding good material. Some even left their finds with Stewart's for Brent to cut open.

Several people have been nominated for Board positions this year. We will be accepting nominations at the October general meeting as well. Anyone who is interested in running for the Board, please contact Sandy Blodgett or Cheryl Peterson. They will submit the nominations list to the Board at the November Board Meeting. After the Board has accepted the nominees, the voting will be at the November General Meeting. If you have questions, I encourage you to check our web site at www.idahogemclub.com. Click on "Club Information" and follow the link to read the club By-Laws.

The Gourd Society Annual Show is coming up on October 22-23. Please sign up with Twila to help keep our table manned. It should be a lot of fun to see even more interesting things we can do with our rocks. The Workshop is darn near finished. HURRAH! The Open House and Ribbon Cutting will be held in November, the exact date has yet to be determined.

I would also like to extend a big THANK YOU to Patsy and Roy Bethel for their generous donation of items for the Wheel of Fortune and the extra material for grab bags. Patsy has made some wonderful limbcast animals, as well as bracelets, etc. We can always use extra items for our show.

The Juniors should be busy this meeting. Ed is bringing some bones to practice identification techniques. It will be interesting to learn how to recognize and identify any bones you may find on your trips.

Keep those tumblers rolling!

Respectfully submitted, Dana Robinson, President

MINUTES OF THE IDAHO GEM CLUB GENERAL MEETING SEPTEMBER 20TH, 2016

President Dana Robinson called the meeting to order at 8:34 pm. **Brent Stewart** led the assembly in the Pledge of Allegiance. **Dana R.** welcomed new members and guests who stood and introduced themselves.

Rick Corbett drew door prize winners: 4 juniors and more than 10 adults

Tina Fredericks drew 4 winners from the building fund.

Finding no corrections to the last meeting minutes necessary Willa Renken proposed a motion to accept the minutes for the last meeting as printed in the Grindings. Motion was seconded by Carl. Members voted and motion passed.

Given the opportunity the juniors elect to remain with the meeting in order to participate in the evening program, show and tell and identification.

Secretary report: none

Treasurer report: none (Treasurer absent)

Federation report: by Linda Barlow: per September Grindings NFMS news.

ROLE report: none

Field Trip report given by Brent S.: The rescheduled Beacon Hill trip will be the 24th of September and will be led by Doug Renken. Group will be meeting at the rest stop outside Ontario, OR at 8:30 am and will depart at 9:00 am.

Stewart's Gem Shop sent two selenite crystal lamps for sale at a discount. The items sold and the IGC received a twenty dollar commission.

Workshop report given by Brent S.: The last of the final details are being completed. A ribbon cutting will be scheduled once the Board has an opportunity to meet and establish some operating guidelines. A special meeting has been scheduled for September 27, 2016 at 7:30 pm.

Dana R. relinquished the floor to the **Nominations Committee Chairperson, Sandy Blodgett**. Sandy B. will be putting together a list of those members willing to serve on the IGC Board of Directors. Several positions need to be filled. Those interested should contact Sandy B. or Dana R. for additional details. Elections will be held in November at the General Meeting. Sandy B. reviewed the process for elections and answered questions from members which included a clarification of responsibilities of Board members and Club Officers, term lengths, and eligibility requirements. Additional explanations and information provided by Willa R. and Charles McCreath. Charles M. also shared his thoughts and experiences as a past Board member. Charles explained the importance of new member involvement in the Club and the benefits of having new ideas and views presented. Charles pointed out how rewarding and educational serving can be and encouraged everyone to consider serving an honor and an opportunity to influence the future of the IGC.

Program: Several members brought in material for identification and to share their treasures. Thank you to those experienced members who provided information and identified samples.

Meeting adjourned at 9:00 pm.

*Respectfully submitted,
Christina Anderson, Secretary*

MINUTES OF THE IDAHO GEM CLUB BOARD Meeting September 27th, 2016

NO REPORT RECEIVED IN TIME FOR NEWSLETTER PRINTING DEADLINE.

MINUTES OF THE IDAHO GEM CLUB BOARD Meeting OCTOBER 4TH, 2016

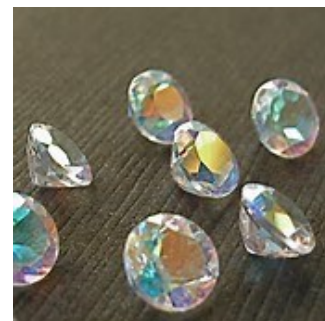
NO REPORT RECEIVED IN TIME FOR NEWSLETTER PRINTING DEADLINE.



OCTOBER

Faceted: Topaz or Citrine

10/4 Twilla Gallaher
10/9 Cindy Woolsey
10/11 John Wold
10/14 Dan Etter
10/15 Mike Beavers
10/22 James Dillion
10/22 Betty Trebilcock
10/25 Virginia Woods
10/26 Janelle Wintersteen
10/31 Brenda Frances



NOVEMBER

Cabochon: Amber

11/1 Lynne Davis
11/4 Mike Allen
11/5 Brittany Temple
11/6 Jaden Wanner
11/6 Melanie Wold
11/7 Peggy Blickfeldt
11/8 Duane Winterroth
11/9 Mary Condon
11/10 Adalyn Temple
11/11 Larry McConnell
11/13 Zara Richert
11/17 Robert Burns
11/19 Jack Price
11/22 Gary Lancaster
11/23 Marge Conley
11/26 Phil Neuhoft
11/27 Charles Smith
11/28 Brent Ferro



FROM DEAN & JUDY PRITCHARD:

We arrived back home Friday from our annual Fall Trek into southern Utah.

Our RV and ATV are still covered with Moab Mud.

Speaking of Moab, we finally tried our hand with the famous "7 Mile Route" in Mill Canyon. Luckily, we ran across a couple of people that invited us to follow them. It was a good choice. That trail is mostly a rock-crawling operation and too risky to try it alone. I am glad I tried it, but I have no desire to run it again.

We also found at least 5 new Dinosaur Tracks in Mill Canyon this trip.

If you want to visit this area, here is a link that will give you some information:

http://www.discovermoab.com/moab_dinosaurs.htm



GOOD SAMPLE OF
7 MILE TRAIL



DINOSAUR
TRACKS IN
MILL
CANYON



TRAIL LEADER
ATTACHES ROPE TO
ATV TO ENSURE
TIRES REMAIN ON
THE GROUND!



DINOSAUR
BONES AT
BIG SNAKE
AREA IN
MILL
CANYON. NO-
TICE ABUN-
DANCE OF
AGATES!



ANYONE WHO
ROLLS THEIR MA-
CHINE HERE IS FIN-
ISHED. THERE IS
LITTLE HOPE OF
SURVIVAL!



IT IS TIME TO RENEW MEMBER-
SHIP:
RENEW NOW !
KEEP YOUR NEWSLETTER
COMING TIMELY !
AT THE ELECTION OF OFFICERS
AND BOARD NEXT MONTH BE
ABLE TO VOTE!

ALERT

For those members who do not know, there have been ongoing problems with someone stealing rock and other items from back yards in the Shoshone St. area. There have also been problems in the Morris Hill area, as well, just to the west of Shoshone. One club member is having things go missing from inside the house as well. Be sure to keep everything locked up tight and keep your eyes open for any strange activity.

AFMS NEWS

by John Martin, AFMS Legislation & Conservation Committee
afmsclc@amtelecom.net

National Monuments have been on the minds of many amateur collectors of rocks & minerals for personal & educational uses. When National Monuments are created whether by legislation or by Presidential Edict, removal of any Biological, Geological, Archeological, Palenotological, & Historical items becomes a Federal Felony. There are of course exceptions as has been seen in California in the Mojave Trails National Monument where intervention, by oversight, from Senator Feinstein, Recreational Rockhounding has been given a temporary exception until the formal Monument Management Plan is finalized. Future National Monuments will not allow Recreational Rockhounding unless the Monument Management Plans expressly allow for this activity. The only way Recreational Rockhounding will be allowed is if there is a united effort by all Amateur Rock & Mineral Collectors to make their voices & actions recognized by the government land managers, legislative bodies & executive office responsible for the creation of the monuments. The list below is a proposal of new National Monuments, some are going through the legislative process but most are being proposed to be created by Executive

Orders. As can be read below not all proposed National Monuments are only in the west. Several are proposed in the Midwest & eastern United States. Will the creation of these monuments have an adverse effect on our Recreational Rockhounding? If there are any collecting areas within the proposed National Monuments, the answer is a definite YES & only you, the Recreational Rockhound, can influence this political action. The future of Rockhounding is in your hands, so you must get involved in the process to save your hobby for present & future generations of Rockhounds.

Maine Woods, Maine
Rocky Mountain Front, Montana
Boulder-White Clouds, Idaho
Owyhee Canyonlands, Oregon
Cascade Siskiyou Expansion, Oregon
Sonoran Desert additions, Arizona,
Vermillion Basin, Colorado
Valles Caldera, New Mexico
Greater Hart-Sheldon, Nevada & Oregon
Sisiyou Wild Rivers, Oregon
Gold Butte, Nevada
Hidden Gems, Colorado
Browns Canyon, Colorado
Big Bend Marine Reserve, Florida
Greater Canyonlands, Utah
Bears Ears, Utah
Bodie Hills, California

One last note, the President just created the largest National Monument in the history of the US in the state of Hawaii. The monument is larger than Washington, Oregon, California, Utah, Nevada, & Arizona combined. Though it is a marine monument & traditional Rockhound as we know it, is not a real problem for the average American Recreational Rockhound, it still remains that no collecting of any kind from inside its boundaries. This monument will have current & future impact on the lives of the residents & visitors of the state of Hawaii.

Linda Barlow, IGC NFMS Federation Director

NFMS NEWS

SHOW SCHEDULES:

October 22 & 23 Sat: 9 - 6 Sun: 10 - 5 Clackamette Mineral and Gem Club Clackamas County Fairgrounds, 694 NE 4th Ave, Canby, OR 97013 Beth Heesacker, heesacker@coho.net, 4145 NW Heesacker Rd., Forest Grove, OR 97116 ksandhorses3@gmail.com or Eileen Paul 541.672.5229 beadpatch@mydfn.net

October 22 & 23 Sat - 10 - 6 Sun - 10 - 5 Bellevue Rock Club Vasa Park, 3560 West Lake Sammamish PKWY SE, Bellevue, WA Bruce Himko bellevuerockclub@comcast.net PO Box 1851 Bellevue, WA 98009

November 12 & 13 Sat - 9 - 5 Sun - 10 - 4 Skagit Rock & Gem Club Sedro Woolley Comm Center, 703 Pacific Street Sedro Woolley, WA Debbie Frank skagitrockandgem@gmail.com PO Box 244 Mount Vernon WA 98273

"THE BEST EVER SUMMARY CHART OF
FEDERAL LAW PERTAINING TO
RECREATIONAL ROCKHOUDING"

Www.GatorGirlRocks
American Rockhounding Law
2016 GGR Federal Law Summary Table.pdf

Save Stamps For Cancer Research

Cut at least 1/4 inch margin around the stamps.
You can turn them into Linda Barlow, NFMS
Federation Director, at our next meeting.
THANK YOU!



Two links for additional newsletters we
receive as members of the rock club.

NFMS—Newsletter available at:

<http://www.amfed.org/nfms/newsletters.asp>

AFMS—Newsletter available at:

<http://amfed.org/news/default.htm>



IDAHO GEM CLUB PROGRAM SCHEDULE

OCTOBER SPECIAL PROGRAM

During our General Meeting this month, I am pleased to announce a special Gem Program:

OPALS!!! Discovery & Creation

Come for a lesson from Greg Sandmeyer, an IGC member and demonstrator at our annual [show.Mr.](#) Sandmeyer is a teacher at Timberline High School. He also administers one of the best Rock & Gem High School Clubs in Treasure Valley. He has extensive experience and knowledge of Idaho Opals. We will learn from the best about hydrous properties of opal material. And he will demonstrate the process for precious opals start to finish. We will do this after general meeting dismisses so plan on staying a little longer this evening!

TESTING FOR SILVER

Often you need to identify some of those unknown "silvery" pieces in the bottom of the toolbox or some piece of old jewelry. Is it silver or something else?

Of course, if you need to know exactly what you have, it's best to send your metals off for refining. But inexpensive silver testing solutions can be used to help distinguish higher silver content alloys from alloys that have the same appearance but with little to no silver content, like German Silver or Nickel.

I purchased a half-ounce bottle of JSP Silver Testing Solution #GT41. It's not a rigorous analytic test, but it lets you know if you're on the right track. And it's inexpensive. Mine was only \$3.

With a fresh solution you have an instant reaction after applying it to the metal being tested. The procedure is simple - as you apply a small drop, look for a color change. Note that the acid will leave a slight mark, so choose a spot that is out of the way or will be easy to polish.

If you suspect the object is silver plated, you should file a little notch somewhere inconspicuous to expose what metal is below the surface. Otherwise, all you test will be the surface plating.

Here's the reaction I got when testing various materials:

| | |
|-----------------------|---------------------------|
| Fine silver | Red/Orange |
| Sterling silver | Brick Red |
| 80% silver 20% copper | Dark red changing to gray |
| Brass | Yellow changing to blue |
| Nickel | Gray-green |
| Copper | Yellow changing to blue |
| Steel | Black |
| Stainless Steel | No color change |

Caution - If you do any of this testing, know that you are handling a reasonably strong acid. The GT41 label says it includes nitric acid and potassium dichromate.

Wear safety glasses.

Do not get any testing solution on your skin.

Use a solution of baking soda and water to neutralize acid.

Wash and clean up well when you're done.

Bench Tips

"Bench Tips for Jewelry Making" and "Broom Casting for Creative Jewelry" are available on Amazon www.BradSmithJewelry.com

REMOVING SOLDER FROM A BEZEL



Sometimes when you solder a bezel to a base plate, you end up with excess solder that needs to be removed before setting the stone. My choice of tool for this is called an "Inverse Cone" bur used in a rotary tool or flexshaft. It cuts on both the bottom and the side and is shaped so that there's less chance of cutting into the bezel wall than if you used the more common cylinder bur shape. I find the 2 mm size useful for almost any bezel.

REFRESHMENT COMMITTEE GUIDELINES

We encourage member participation in bringing cookies snacks and beverages to share during break at general meetings. Total provision among members assigned to bring refreshments is for 8-10 dozen cookies or snacks and drinks/juice for approximately 50-70 people. That can be veggie trays, breads, any other treats. We ask for 10 adult and 10 youth door prizes which are wrapped in a bag. Usually minerals or rocks or slabs. Club provides coffee service and paper plates napkins and cups.

Please contact **Deana Ashton, 208-794-5628** and let her know if and what you will be bringing for the current month so she can coordinate and be sure enough is provided for snack, beverage, and door prizes. Some could bring food, some could bring beverages, some could bring door prizes. Thanks for your participation.

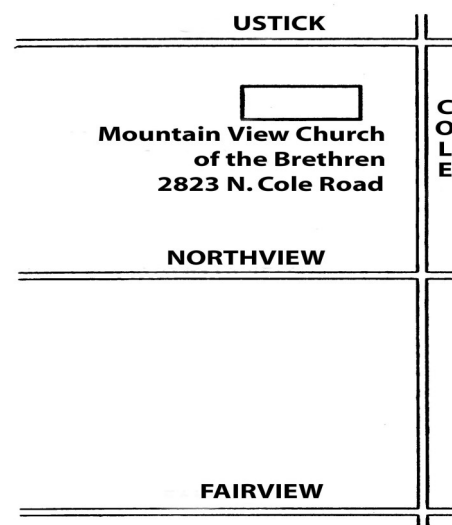
Members whose last name begins with letter listed below, are asked to bring after meeting snacks for the month indicated.

JANUARY _____BANQUET
 FEBRUARY _____A-D
 MARCH _____E-K
 APRIL _____L-R
 MAY _____S-Z
 JUNE _____A-D
 JULY _____PICNIC: A-K*
 AUGUST _____PICNIC: L-Z*
 SEPTEMBER _____E-K
 OCTOBER _____L-R
 NOVEMBER _____S-Z
 DECEMBER—HOLIDAY COOKIES BY ALL



GENERAL MEETING
 3rd. Tuesday of every month

BOARD MEETING:
 1st. Tuesday of every month
 2 September 2014
 Church of the Brethren
 2823 N. Cole Road, Boise, Idaho
 Meeting Starts at 7:30 p.m.



The purpose of the Idaho Gem Club is to promote mutual, educational and scientific interests and benefits of its members in mineralogy, geology, gemology, the art of lapidary and kindred arts and sciences.

Dues:
 \$22.00 per person
 \$25.00 per couple
 \$28.00 per family

Subscription:
 \$10 per year

General Meeting:
 3rd. Tuesday of each
 Month at 7:30 p.m.

**JUNIOR
 RATTLES:**

**REMEMBER TO
 BRING YOUR
 FOLDERS**

