


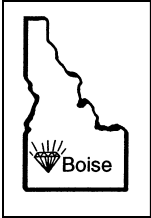
Grindings

Idaho Gem Club, Inc.

P.O. Box 8443  Boise, Idaho 83707-2443

VOL 73 NO 10

October 2013



BOARD OF DIRECTORS

Brent Stewart
President
863-9336

Willa Renken
1st Vice President
362-3941

Phil Neuhoﬀ
2nd Vice President
939-4508

Ed Moser
340-8060

Jim Clinton
283-8891

Deana Ashton
794-5628

Melodee Worley
890-6834

Phillip Worley
891-3990

Barb Carey
906-5968



SECRETARY

Melodee Worley
322-5985

TREASURER
Barbara Wanner
794-9474

NFMS DIRECTOR
Charles McCreath
344-5085

EDITOR
Tony Griffin
467-9286

highdesert2003@q.com

CLUB WEB SITE
www.idahogemclub.com

President's Message

Fall is here and so is the cooler weather. The last field trip was a huge success to Beacon Hill and I understand that a lot of wonderful material was found. Our next trip will be out to Texas Springs for some nice wood. We will combine this trip with the Owyhee club. Details inside.

Auctions are scheduled for our November and December meetings. These Auctions are fun and help set the mood for the Holidays. The funds raised help support funding for our banquet in January. The December auction is typically completed items, so you can finish your Christmas shopping then.

Please keep tumbling rocks, and preparing grab bags. Mark the dates for the next show which will be February 22nd-23rd 2014. Remember we need everyone's contribution to make it a success.

The Project of the Year contest is coming up in December. This is a terrific opportunity for you to share your talents and ambitions with the rest of the club, as well as receive some recognition. The project can be any media, as long as it is related to earth science or lapidary. Still rather new is that the club will have two categories for the Project of the year, one for the adults, and one for the juniors. The projects will be voted on by the general membership and the winner will receive a plaque that they get to keep for a year. The project will also be displayed at the annual show in a case the end of February.

Barb Carey is chairing the Board member nominating committee. Please contact Barb if you would like to be nominated or know someone who might be interested in serving as a Board member. We will be providing a brief biography for each of the nominees in November's newsletter. We can also accept nominations from the floor during the November meeting.

Well, our hot summer is just over and it's time to get back to a little more serious business—DUES ARE DUE! Seems that sometimes we tend to forget that October is the month for renewing our dues and they will slip by until spring. Paying dues keeps our members receiving "The Grindings" and after December the newsletter won't be sent until dues are paid. So get them in as soon as you can. Thank-you.

Brent Stewart
President

**MINUTES OF THE IDAHO GEM CLUB
GENERAL MEETING
September 17, 2013**

Minutes not available at time of printing, they will be in the November "Grindings" in addition to the November minutes.

**MINUTES OF THE IDAHO GEM CLUB
Board Meeting
October 1, 2013**

Minutes not available at time of printing, they will be in the November "Grindings" in addition to the November minutes.

Dues

Are

Due

See last page for
amount and categories

SHOP CARTS FOR SALE

Call for details

Ron Dingley

867-2912

From a Rockhounds list: concerning drilling holes in cabochons.

Good one Denny :-) Thanks

If you DO have to drill a hole consider turning it into a design element with a cut-out on the back of the setting. That's why I ALWAYS polish the BACKS of the cabs I cut. Cut a star, or moon, or some other fancy cut-out. You actually only need a couple millimeters around the underside of the stone to hold it in. All the rest of that metal backer is a canvas for your creativity and the opportunity to show off the back of your stone. So, take note of the patterns of the backs and accentuate them. Make lemonade out of that hole-y lemon.

But Brad is absolutely right. Always drape some dental floss over the bezel before trying the fit of your stone. I place the floss off-center, slightly towards one end of the stone since it's easier to pull up one end than the whole stone in one go. And be sure to pull up on BOTH ends of the string or you might might just pull it through and leave the stone stuck.

Denny Turner—San Diego

Bench Tips

Cutting a Bolt

Whenever you have to cut a threaded bolt shorter, it's often difficult to get the nut to thread back onto it. And the smaller the bolt, the more difficult it is to restore any distorted threads. The problem is easily solved with the use of a nut. Here's how I do it.

First, screw a nut onto the bolt before cutting it. Grip the bolt in a vise by the threaded section that is to be sawed off. Then saw the bolt to the desired length, taper the end with sandpaper or file, and unscrew the nut from the bolt.

Unscrewing the nut over the freshly cut end of the bolt will straighten out any damage that sawing and filing did to the threads. Gripping the bolt by the piece to be sawed off localizes any crushing damage to the piece that will be thrown away.

JUST SAY NO TO OPTIVISORS

During his annual vision-checkup, a jeweler friend of mine wondered why not have his reading glasses made with bifocals that would magnify the same as the Optivisors? So he asked the ophthalmologist if he could add around +2.00 diopters into bifocals.

The doctor checked with his supervisor and came back all excited. They all agreed that it was a great idea and even gave him a special device to measure how far he holds a jewelry piece from his eye, to get the focal distance exactly right. So if all goes well, no more sweaty, bulky optivisors! Anyone else tried this?

MANDRELS

Straight rod mandrels have a multitude of uses in helping to bend sheet and wire. Frequently we choose a round rod for winding jump rings. Common sources for different sized rods are knitting needles, wooden dowels and clothes hangers. Metal rods can also be found in hardware stores and hobby shops.

But to get the right "look" in chain mail designs, you must have just the right size mandrel, and often they are not easy to find.

Jewelry catalogs sell selections of straight rod mandrels for \$50 or more, but my choice is from Harbor Freight. They have a set of 28 sizes, from 3/32 inch to 1/2 inch, for under ten bucks. It's called a Transfer Punch Set. The catalog number is #3577, and the price is \$9.95. Plus, look for the 20% off coupon on any one item in their advertising circular. That cuts your cost to around eight bucks. I've bought four of these over the last couple years. www.harborfreight.com



Attribution requested with each publication:

More Bench Tips by Brad Smith are at [facebook.com/BenchTips/](https://www.facebook.com/BenchTips/) or see the book "Bench Tips for Jewelry Making" on Amazon

News

Idaho Geologic Map Honored for Design, Quality Science

Wednesday, September 25

MOSCOW, Idaho – The comprehensive, rainbow-hued geologic map of Idaho released in 2012 has received top honors from the Association of American State Geologists.

The Idaho Geological Survey map and its authors won the inaugural Charles J. Mankin Memorial Award, which recognizes state geological survey publications that stand out for their uniqueness, design, high-quality science, and relevance to scientific and societal issues.

“To be the first recipient of this award is exciting,” said Reed Lewis, an Idaho Geological Survey (IGS) research geologist who led the map project. “These are our true peers who are evaluating our work and recognizing it.”

The map, which features Idaho’s faults, rocks, sediments and geologic history, took 10 years to create. It serves as a tool for government agencies, industry, contractors, engineers and others, as well as for the general public. A digital version of the map featuring additional searchable layers for exploring faults, thermal springs, oil and gas wells and more is available at www.idahogeology.org.

The IGS has sold more than 1,500 copies of the map. Elementary schools across Idaho will soon have a copy of their own, thanks to sales of **Idaho’s earth science and lapidary specialty license plate**, which supports earth-science education for kindergarten through sixth-grade students. Proceeds from the plate sales have purchased 350 maps for distribution to Idaho classrooms.

Mankin, the award’s namesake, was Oklahoma’s state geologist for 40 years and was a leader in the national geological community. He helped establish STATEMAP, a U.S. Geological Survey program that funds mapping projects to help states meet important earth science needs. Much of the new geologic mapping in Idaho used in the compilation was funded through competitive STATEMAP grants.

Loudon Stanford, IGS digital geologic mapping manager, knew Mankin and said he is honored to win an award that memorializes his friend and recognizes the IGS team’s talent and motivation.

“I think it’s a tribute to what a bunch of good people in a

small place can do when they work hard,” Stanford said.

The Idaho Geological Survey is a public service and research agency at the University of Idaho. Idaho statute directs the survey to collect, interpret and disseminate geologic and mineral data for the state. Members of the Idaho Geological Survey staff acquire geologic information through field and laboratory investigations and through cooperative programs with other governmental and private agencies.

Media Contact: Tara Roberts, University Communications, (208) 885-7725, troberts@uidaho.edu

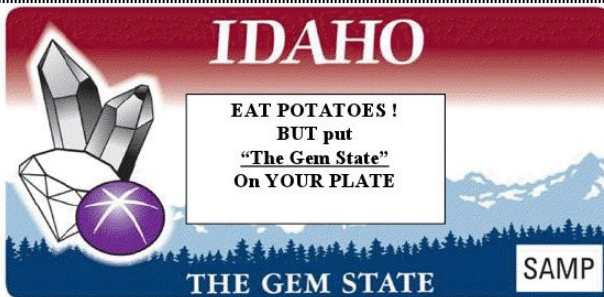
<http://www.uidaho.edu/newsevents/item?name=idaho-geologic-map-honored-for-design-quality-science>

EARTH SCIENCE AND LAPIDARY SPECIAL INTEREST PLATE:

Another new and exciting development and hope for saving our license plate from extinction, was joining forces with the Idaho Science Teachers Association President. We are composing a letter directly to teachers in Idaho, and he promises to get in their email boxes directly. He really values the concept and with over 4,000 science teachers statewide, we may just get lucky and sell the 1,000 plate minimum soon! I also plan on attending a Science Teacher Conference in Pocatello in the fall to speak and show the plate design and promote our program.

We are working on a promotional sticker for the back windows of cars sharing information about the plate. Hopefully we can make sure the text on sticker is large enough we don't end up with hazardous rear end crashes from motorists trying to read them! Pretty creative ideas...we have to try it all! Ask me for the business cards to pass out for anyone you know. We have plenty!

Thank you for supporting the Earth Science special interest plate!



IDAHO

EAT POTATOES !
BUT put
"The Gem State"
On YOUR PLATE

THE GEM STATE **SAMP**

Purchase the Earth Science/Lapidary Special Interest License plate for your Vehicle or RV
At your local Idaho DMV or online !
Current registration credited towards purchase.
Proceeds benefit Idaho K-12 Earth Science Education.

HAPPY



BIRTHDAY

OCTOBER

10/4 Gina Gartman
 10/5 Nicole Baron
 10/6 Kevin Chase
 10/8 Todd Jackson
 10/9 Jo Thompson
 10/9 Cindy Woolsey
 10/14 Patricia Dailey
 10/14 Rebekah Jackson
 10/15 Dawn Schuldenfre
 10/15 Katie Vanderbeek
 10/16 Ted Reynolds
 10/17 Elley Folks
 10/21 Violet Gomm
 10/22 Jim Dillion
 10/22 Betty Trebilcock
 10/22 Bryce Dethlefs
 10/23 Colleen Lamansky
 10/25 Karen Butler
 10/26 Michael Baker
 10/26 Lois McDonald
 10/26 Christopher Griffin
 10/26 Janelle
 Wintersteen
 10/27 Ben Harju
 10/28 Sue Clark
 10/28 Allan Young
 10/29 Sandy Johnson

October Birthstones
 Faceted — Tourmaline
 Cabochon — Opal

NOVEMBER

11/1 Peggy Dean
 11/5 Hauns Snyder
 11/6 Jaden Wanner
 11/7 Peggy Blickfeldt
 11/7 Christopher Brewer
 11/7 Brandon Chase
 11/7 Larry McConnell
 11/10 Chance Wilson
 11/11 John Munson
 11/12 Penny Dudley
 11/13 Rick Bidwell
 11/13 Daniel Brock
 11/14 Dennis Woodbury
 11/19 Jim Brock
 11/19 Steve Ostrander
 11/20 Natalie Bruner
 11/20 Donna Ford
 11/21 Gary Hanes
 11/23 Marge Conley
 11/23 Dakota Ford
 11/24 Alta Seitz
 11/26 Phil Neuhoff
 11/26 Rick Denton
 11/27 Gary Smith
 11/28 George Carlson
 11/28 Mary Munson

November Birthstones
 Faceted - Topaz or
 Citrine
 Cabochon — Amber

Dates To Remember**GENERAL MEETING**

3rd. Tuesday of every month
 October 15, 2013

Church of the Brethren
 2823 N. Cole Road, Boise, Idaho
 Meeting Starts at 7:30 p.m.

BOARD MEETING:

1st. Tuesday of every month
 November 5, 2013

Church of the Brethren
 2823 N. Cole Road, Boise, Idaho
 Meeting Starts at 7:30 p.m.

October Refreshment Committee

Chair: Rick Corbett 383-9930
 Ilse Shreiner 362-2416
 Sheryl Peterson 991-6631

REFRESHMENT COMMITTEE GUIDELINES

Need approximately 15 dozen cookies.
 Wrapped door prizes are also needed.

Arrive early enough to set up the chairs. The chairperson brings the coffee urn, coffee, punch, cream, sugar, cups and napkins. Afterward, put meeting tables & chairs away, clean kitchen and sweep the room. Gather and take all the trash with you. Don't forget it is the responsibility of the chair for the coming month to pick up the coffeepot, take it home and bring it the next meeting

November Refreshment Committee

To Be Arranged

THE GRINDINGS

is the monthly newsletter of the Idaho Gem Club, Inc., associated with the Northwest Federation of Mineralogical Societies. Permission to copy is freely granted when proper credit is given to both the publication and the author. Articles without bylines are written by the Editor or President.

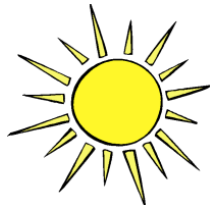
CHECK OUT THE CLUB WEBSITE!

www.idahogemclub.com



SUNSHINE LADY REPORT:

Please let me know if you are aware of any of our members having surgery, an illness, or just in need of cheer. We all can use some good cheer! We try and keep in touch with all our members, and I apologize if we have overlooked any member who has lost a loved one. Please let us know if we can help in any way. Contact Deana Ashton at 208-794-5628 or any Idaho Gem Club Board Member/officer.



As a Private duty Hospice Care provider, and I am more than willing to offer respite care to any families in need of a break caring for their loved one who is preparing to pass on. It would be my pleasure to help out a family caregiver while they go catch a movie, take some time alone, make arrangements, care or themselves, whatever they need. I encourage you to call Deana at 208-794-5628. I will gladly help if I can.

IF YOU WOULD LIKE TO ATTEND ANY GEM CLUB FUNCTIONS BUT ARE UNABLE TO DRIVE, CALL ME! WE WILL DO OUR BEST TO GET YOU THERE!

Deana- 208-794-5628

Idaho Geologic Maps and UV Lights For Sale: Support the club's scholarship fund and get yourself some great tools for rock hunting. We will have two items for sale. The first is a great handheld 4W UV lamp that has long-wave, shortwave, and mid-wave output. The lamps come with a carrying case, telescoping magnetic handle, and a special fluorescent mineral sample, all for only \$95 (\$5 less than retail). We also have a limited quantity of copies of the new Geologic Map of Idaho available for purchase. This beautiful 36" by 48" map comes with a booklet and sells for \$20 (same as retail, but shipping would cost an additional \$9.32).

YESTER YEAR

May 1972

The club decided to try seven dealers at the show. A map to the Jameson Bag area was passed out by Al Larsen. The June trip will be to Hooker Creek near the Jamison Bog area. Plans were made to go to Bergdorf in July.

At the monthly meeting motion was made not to accept application for reinstalling one of the members. Motion passed and the secretary notified her and returned her \$3.00 fee. (This goes back to the problem the Howell's had with her and her husband)

Envelopes were [passed out for registration to the Federation show over Labor Day in Portland.

In September the club bought a two wheeler trailer with a locking door. This will hold the clubs property.

A motion was made for the book "Gems and Minerals of Idaho" by John Beckwith to be purchased for the Clubs Library.

The September field trip will be to Upper Succor Creek.

Arrangements to clean up Grave Yard Point were made and Monroe Coleman offered to find out the best way to do this so the BLM could haul the trash away.

*In Loving Memory
Patsy Bethel-Historian*

Idaho Gem Club Field Trip

Oct. 19th Texas Springs, Nevada—
limb casts

Combined Field Trip

Idaho Gem Club

and the

Owyhee Gem & Mineral Society

Meet in Jackpot at the
General Store on the
far end of town

Leave time: 8:30 a.m.

If you want to stay over night please make
your own plans for camping or at one of
the hotels in Jackpot.

Happy Hounding
Phillip Worley
Field Trip Coordinator

October Program:

Ed Moser will talk about sand dollars based on the information he presented to the Rocky Rattlers last month. People are encouraged to bring sand dollars of their own to follow along with Ed's presentation.

Federation & Other Club News More Dates to Remember

Payette Rock & Mineral Show
Oct. 18th & 19th 9 am till 5 pm
Payette Community Center
633 2nd Ave. South, Payette, Idaho

Mountain Home Rock & Mineral Show
Oct. 26th 9am till 4 pm
Mountain Home Elks Lodge
325 S 3rd W; Mountain Home, Idaho

Magic Valley Gem Club—
Oct. 19th—Bruneau Wood Pile
Meet at crossroads in Hammett at 8:30 a.m. —
leaving at 9:00 for Bruneau Wood Pile

Owyhee Gem & Mineral Society
Oct. 19th Texas Springs, Nevada—limb casts

Clackamette Mineral & Gem's. Clackamas County Fairgrounds, in Canby, OR. October 26 from 9-6pm and 27 from 10-5pm. Free admission. Email www.clackamettegem.org.

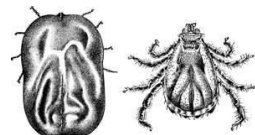
Kitsap Mineral & Gem Society. November 23-24 from 10-5pm. Free admission. At the Presidents Hall on the Kitsap County Fairgrounds, Bremerton, WA. Email www.kmgs.org.

Inter-Regional Fieldtrip in Terry, MT. July 31, August 1-3, 2014. Email dtruefossils12@yahoo.com2014

NFMS 2014 Rock & Gem Show & Convention. Hermiston Conference Center. August 15-16 from 10-6pm, and August 17 from 10-4pm.

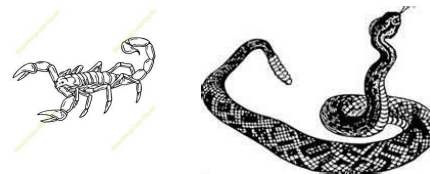
**Watch out for these critters when
you are rockhounding!**

female & male
tick



Workshop
October 17th
6:30 p.m.—9:30 p.m.

A map for directions
can be found in the
August "Grindings"
on our website
idahogemclub.com



The purpose of the Idaho Gem Club is to promote mutual, educational and scientific interests and benefits of its members in mineralogy, geology, gemology, the art of lapidary and kindred arts and sciences.

Dues:

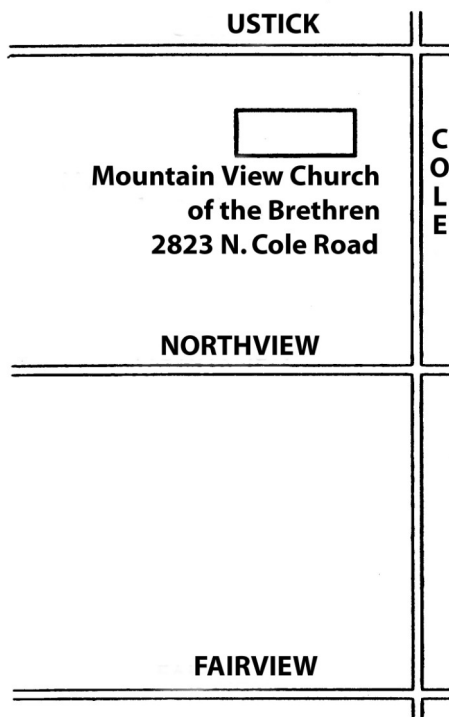
.....\$17.00 per person
\$20.00 per couple
\$23.00 per family

Subscription:

.....\$10.00 per year

General Meeting:

.....3rd. Tuesday of each
Month at 7:30 p.m.



The Whangdoodle Bird
 (Often seen on field trips)



Idaho Gem Club, Inc.

P.O. Box 8443
 Boise, Idaho 83707-2443



Rocky Rattlers

Juniors need to bring their folders to
 the meeting this month