

Grindings

Idaho Gem Club, Inc.

P.O. Box 8443 ♦ Boise, Idaho 83707-2443

VOL 69 NO 1

January 2009



BOARD OF DIRECTORS

Catherine Parsons
President
465-1646

Willa Renken
1st Vice President
362-3941

Ilse Schreiner
2nd Vice President
362-2416

Joe Nielson
362-3522

Ed Moser
340-8060

Arlene Bailey
562-8030

Terry Tomberlin
343-7506

Tony Griffin
467-9286

Twila Gallaher
853-6703



**RECORDING
SECRETARY
OPEN**

TREASURER
Kathy Griffin
467-9286

NFMS DIRECTOR
Charles McCreath
344-5085

EDITOR
Doug Renken
362-3941
WLR_DKR@MSN.COM

CLUB WEB SITE
www.idahogemclub.com

President's Message

Welcome to a new rockhounding year!

Please contact your Senators and Representatives to show your support for our License Plates. We are not sure when they will have hearings, etc. but we need to make sure they know we support passage of the bill. You can find a list of your legislators by contacting your County Clerk's office. I believe a web address is enclosed in this issue also.

Congratulations to Jean Dingley on her win for the Project of the Year. We had quite a few beautiful entries and everyone who entered should be proud of the work they did! She will have a showcase for the plaque and her work at the Annual Show in February.

The show will be here before you know it! It's scheduled February 28 - March 1 2009 at the fairgrounds on Chinden. Remember to come help us on the 17th to stuff bags and put postage on postcards and so on. I hope you all have a lot of tumbled rock to turn in also. We sell approximately 800 bags of them each year and the club is not able to tumble that many with our tumbler.

Our Show Committee Chairmen will have sign up sheets at the Banquet and the "stuffing" party, so please be sure to look for them and get your spots early. The shifts are typically 2 hours each and it's a lot of fun and the time goes by quickly. We'll also need your help in setting up and taking down – see inside for information from Doug.

Our January meeting is the annual banquet and I hope you've gotten your tickets by now. The deadline from the hotel was the first week of January. This meeting is our most important meeting of the year and the new officers and Board members are installed at the meeting.

Thank you for all of your support over the past year! Best wishes to you and to your new President and Board members!

Catherine Parsons
President

**MINUTES OF THE IDAHO GEM CLUB
GENERAL MEETING ♦
DECEMBER 16, 2008**

President Cathy Parsons called the meeting to order at 7:30 p.m. followed by the Pledge of Allegiance led by Tony Griffin.

Guests Ron Mummey was introduced by the Welcoming Committee to stand and tell the club a little about himself.

Door Prizes were won by Sarah Newhoff, Diane Perkins, Bill Marsh, Willa Renken, Linda Phillips, Robert Turner, Phil Neuhoff, Jason Madsen, Gene Alvey, Cathy Parsons, Cris Griffin, Harold Holloway, Loren Frances, Lynne Davis, Phyllis Marsh, Jackson Newhoff, Jim Dillion, Ron Ridenour, Kiley Madsen, Jim Prendergast, Don Nafus, Dan Phillips, Chuck Marsh, Curtis Crum, Coyote Short, Heather Madsen, Amy Watson, Jim Jencks, Ron Coolbaugh, Deanna Moser, and Terry Tomberlin.

Joe Nielsen presented the building fund door prize, a bag of crystals, to Jim Dillion.

A motion was made by Tony Griffin to accept the minutes as printed in the Grindings. The motion was seconded by Ed Moser and approved by the members.

Jean Dingley, secretary, reported we had received several newsletters from various clubs.

Kathy Griffin provided the Treasurer's report for the month ending as of November 30th.

Chuck McCreath talked about the upcoming Northwest Federation/American Federation show upcoming in Billings, Montana. This will be a National show. He also requested Club members to keep on turning in postage stamps to him.

COMMITTEE REPORTS

WORKSHOP: The workshop will be at the Renkens, December 20, & 21 from 9:00 a.m. to 5:00 p.m. There will be a potluck and bring some rock slabs to work on. It is advised not to make heart or cross designs, as these cause extra wear on the wheels. A basic cabochon is advised for the workshop machine use.

FIELD TRIP: This month's trip is the workshop this coming Saturday and Sunday. Tony stated he will have a new list of field trips for 2009 and is open for suggestions on places to go. Last month's field trips were a success and a commendation was given to Sandy Blodgett for leading a group to Graveyard point for being so helpful and informative.

LIBRARIAN: Terry Tomberlin thanked Cheryl Ellicott for her donation of several books to the club's library. Also, Terry is in the process of getting shelving and display cases for the club's library and having the cases stay in the Church, locked and on castors.

JUNIORS: Heather Madson presented the vests made for the juniors. Ed Moser stated that there are six new junior

members and each will get a patch. Also, Ed presented to the Idaho Gem Club an American Federation Certificate, "Future Rockhounds of America".

REFRESHMENT COMMITTEE: Willa presented the annual sign up sheet for the refreshments and all members were encouraged to sign up.

BUILDING FUND: Joe Nielsen gave recognition to Ron and Jean Dingley and Chuck McCreath for the spheres presented for the upcoming Building Fund Raffle and the Show Raffle. The tickets will start at \$5.00 a ticket and the material is Owyhee Jasper.

SHOW: Charlie Smith, Show Chairman, stated the show is going well, with a lot of thanks to Doug Renken. The dealers are responding well, and a thanks was given to all the chair committees and all the volunteers who help with the show.

OLD BUSINESS

The License Plate project is in progress. A motion was made by JoAnn Alvey that the Idaho Gem Club pledge up to \$3,500.00 towards the Bill and motion was seconded by Carl Woodland. Another motion was made by Willa Renken to table the proposal of the Idaho Gem being the sponsoring party of the committee determining the monies appropriation, until we get an okay from the Club's attorney that our C3 status is not in jeopardy. The motion was seconded by Sandy Blodgett. Another motion was made by Jim Storey that if our Club's Attorney gives us an okay there is no conflict with our C3 status that the Idaho Gem Club authorizes the Board of Directors to finalize the sponsorship. The motion was seconded by Tony Griffin. The motion carried. Club President Cathy Parsons will make arrangements to meet with the Club attorney as soon as possible.

The Project of the year had several participants, in all respects, winners. The majority vote was won by Jean Dingley for her silversmithing.

Banquet tickets are on sale at the meeting and at Stewart's Gem shop. The banquet is on January 20th, at the Owyhee Plaza, cocktails at 6:00 p.m., dinner 7:15 p.m. Deadline for ticket purchase is January 12.

A memorial for the loss of Mrs. Alberta Stewart was a donation of \$300.00 to Saint Lukes Hospice.

NEW BUSINESS

Joe Nielsen was appointed to head a committee to develop a policy regarding checkout of black lights for Board approval. The policy will be published in the Grindings as soon as it is approved by the Board.

Meeting was adjourned to an Auction.

*Respectfully submitted,
Jean Dingley,
Acting Secretary*

**MINUTES OF THE IDAHO GEM CLUB
BOARD MEETING ♦
JANUARY 6, 2009**

President Cathy Parsons called the meeting to order at 7:30 p.m. The following board members and officers were present: Cathy Parsons, President, Willa Renken, Ilse Schreiner, Joe Nielsen, Ed Moser, Arlene Bailey, Terry Tomberlin, Tony Griffin, Twila Gallaher, Kathy Griffin, and Charles McCreath and Jean Dingley, Acting Secretary. Newly elected Board members for 2009 present were: Jason Madsen, Phillip Neuhoff, and Dan Phillips. Guests were: Doug Renken, Shirley McCreath, Ron Bailey, Linda Phillips, and Marge Conley.

Willa Renken moved to accept the minutes as printed in the "Grindings"; Ed Moser seconded the motion, and the motion carried.

Secretary's Report – There was a Newsletter from The Billings Gem & Mineral Society and the current Rock and Gem magazine.

Treasurer's Report – Kathy Griffin presented the treasurer's report as of December 31, 2008. She further stated that all the dealer deposits are in for the upcoming February show, along with the Club's deposit for the show's Fairgrounds agreement. The \$300.00 donation in memoriam for Alberta Stewart was made and a thank you note was received by the Club from Saint Lukes Hospice. A notice of payment was received from The Department of the Interior for a mining claim and will be forwarded to Cheryl Link. The Northwest Federation registration is in progress. Auditing of the Club books was discussed and will be scheduled prior to the Annual Meeting

Federation Report – Chuck McCreath discussed an announcement received from the Rockhound PowWow of America Club in regards to activities, field trips, and their upcoming show in Madras, Oregon. For further information members can contact: Pauline Miller at 360-658-8091 or Rocky McCall at 360-629-2515.

COMMITTEE REPORTS

WORKSHOP: There was good participation at the annual two day December workshop/potluck this year. Marge Conley bought more wire for supplies for the workshop projects, and the bill was presented to the Treasurer along with other expenses incurred for the workshops operation and events with detailed receipts submitted by Willa Renken. Also mentioned was a proposal for the Club to purchase a new 24 or 30 inch saw for the workshop because the current 30 inch saw which was purchased needs extensive retooling/retrofitting and those parts would have to be made by a knowledgeable craftsman. A discussion followed regarding brands, models, saw size, pricing, club member's usage, and Club payment. The Board (both incoming and outgoing members) was in favor and more research will be conducted along with the proposal being presented to the general membership when applicable.

REFRESHMENTS – Willa stated that she had set ups for the first four months in regards to the refreshment committees. More volunteers are needed.

ROLE – no report.

FIELD TRIP – Tony Griffin stated that there are several tentative field trips scheduled for the upcoming 2009 year, along with two possible Federation trips. More information about the upcoming field trips will be printed in the "Grindings". Tony is looking for a Field Trip Coordinator for the upcoming year 2009.

LIBRARIAN – no report.

JUNIORS – Ed Moser received some rose quartz for the juniors from Bob Turner, and some Wyoming fossil shells from Marge Conley. Ed stated that juniors interested in entering the Quiz Contest section in the Rock and Gem magazine may receive prizes—a junior member in the Owyhee Gem and Mineral Society recently received a prize. Twila Gallaher suggested that any juniors interested in putting in a case at the upcoming February show contact her for an application. Also discussed was that the juniors must be listed by name to be registered with the Northwest Federation, thus registering them with the American Federation to receive badges and enter competitions. This junior name-list must be submitted along with the Club's Northwest Federation yearly membership register submitted by the Treasurer.

SUNSHINE – no report.

BUILDING FUND – Joe Nielsen asked about the Banquet tables, as he needs a table for his sphere raffle set up at the annual meeting. He will follow up with Jim Prendergast.

SHOW – Doug Renken showed the case favor for this year's show case participants. It is a 10X loop with the Idaho Gem Club inscribed on it. Doug also stated that Saturday, January 17th, at 9:00 a.m. at the Church the club will fill grab bags. Tumbled rock is needed.

OLD BUSINESS:

The Board met on December 20, 2008 to conduct a Special Board Meeting in regards to the License Plate Proposal. The draft Minutes were presented and read at the regular Board meeting. Issues were addressed and resolved to further the License Plate proposal before the hearing. All Board members (outgoing/incoming) agreed with the actions taken.

Tony Griffin presented his officers for the new Board of 2009. Willa Renken 1st Vice President, Philip Neuhoff 2nd Vice President, Jason Madsen Secretary, Kathy Griffin Treasurer, Federation Director Chuck McCreath, Librarian Terry Tomberlin, and Historian Patsy Bethel. Willa Renken moved to approve the new Officers and Twila Gallaher seconded the motion. The motion carried.

Also, Tony Griffin appointed Willa Renken to be the second signer on the check registry along with the Treasurer, Kathy Griffin to avoid a potential conflict of interest. The Board approved.

Also brought up was a discussion on how to regulate and distribute the Club's Black Lights. The Board is developing a written policy and guidelines which will be published in the Grindings after they have been approved.

MEMBERSHIP PPLICATIONS

A membership application was received from Vern Boyd. Tony Griffin moved to accept the application and Willa Renken seconded the motion. The motion carried.

*Respectfully submitted,
Jean Dingley
Acting Secretary*

**MINUTES OF THE IDAHO GEM CLUB
SPECIAL BOARD MEETING ♦
DECEMBER 20, 2008**

A special Board Meeting was called for 2:00 pm on Saturday, December 20, 2008 at the personal invitation of President Catherine Parsons to discuss the activities of the Committee authorized to work on the Idaho rockhound license plate and to discuss the results of the meeting with the IGC attorney Allan Bosch.

At 2:30 pm the meeting was called to order with President Cathy Parsons, and Board Members Willa Renken, Tony Griffin and Joe Nielsen in attendance along with Federation Director and IGC license plate committee representative Chuck McCreath. Twila Gallaher had previously given her verbal approval to vote with the other Board members on any action taken during this meeting. Those absent were Ed Moser, Terry Tomberlin, Arlene Bailey, and Ilse Schreiner.

Chuck McCreath discussed the outcome of the license plate committee meeting and then presented the outcome of the meeting with the IGC attorney.

Chuck McCreath, Charles Osgood, Joe Nielsen, and Cathy Parsons met with Allan Bosch, Attorney for the Idaho Gem Club, on Friday, December 19, 2008 at his office at 10:00 am. Charles Osgood provided a copy of the proposed license plate and discussed the proposed legislation and license plate sales and whether or not this would impact the 501-C3 status of the Idaho Gem Club. He stated that as there is no paid staff for the Idaho Gem Club and as these funds are considered donations there would be no impact. However, he did oppose the original License Plate Committee concept of a "Committee in Perpetuity" (ie a standing committee composed of one representative from each club) which would have been responsible for disseminating the funds received. We would have had to use another Club's tax exempt status or set up a new organization to control the funds. We will receive a follow-up letter from him for our files. Mr. Bosch also stated that monies received for the sale of the plates could be included with other IGC funds however license plate receipts would have to be tracked separately.

Chuck presented three options for consideration:

- 1) leave all remaining decisions to the License Plate Committee;
- 2) give all the money from the sales of the license plates to the Department of Education with no directions; or
- 3) Keep it with the Idaho Gem Club
 - a. Money comes to the Idaho Gem Club
 - b. Money would be sent to the other participating Idaho clubs as it is received by the Idaho Gem Club.
 - c. Money would be shared on a percentage basis of the total contributions for development costs of the plate.

d. The letter to be sent with the monies to the participating club would state the monies could only be used for Earth Science projects.

Chuck noted that the Department of Transportation forwards money it receives to the State agency responsible for handling state monies (Department of Finance) which in turn would forward those funds to the chosen "organization" listed in the legislation. However, we do not know the timeframe of when those monies would be forwarded (quarterly, semi-annually, or annually).

There can only be one sponsor (or one organization) of the legislation. And, at this time the Idaho Gem Club has accepted that responsibility.

There can only be one person contacting the Department of Transportation for these license plates and that person is Charles Osgood.

If funds received from sales of the license plate would be remitted to the Department of Education someone from the Idaho Gem Club would have to lobby the Department to make it known that we would want these funds used for Earth Science educational purposes/projects. There is no guarantee that they would grant our request.

The Board members present at the special Board meeting discussed the options at length and agreed that the third option would provide us and the other participating clubs with the best option for using the receipts for earth science education purposes/projects. Board members present also agreed these payments should not be commingled with the other IGC receipts and that a completely separate bank account should be set up for these funds.

The current draft legislation reflects that the Idaho Gem Club will be the recipient of the license plate receipts for general education/earth science. The Board members present agreed to the fund sharing plan outlined above and agreed that the funds would be disbursed to the other participating clubs as soon as they are received.

Saturday evening President Cathy Parsons telephoned Ed Moser, Terry Tomberlin, and Arlene Bailey and explained the issues to each Board member and answered questions as needed. Each person confirmed their approval of the Board action. Ilse Schreiner could not be reached prior to the Special Board Meeting or after.

Some questions remain, however, they will be addressed at a later time.

*Respectfully submitted,
Catherine C. Parsons,
President*

Gem Show 2009

The Annual show is upon us again. For the new members in the club this is the main fund raiser for the club. This is a club show and does require full club support. All who contribute will be allowed into the show for free. If you are a club member and do not want to contribute you will be required to pay admission.

Setup will begin on Thursday February 26th at 1:00 p.m. at Lockaway Storage 5246 Chinden Blvd. At that time we will unload as much of the storage unit as possible depending on available empty trucks. The tables will be loaded into the u-haul truck. Then all other show equipment (electrical, lights, cases, case fronts, silent auction rock) will be loaded into empty trucks. The more we can load on Thursday the easier the setup will go on Friday. Then on Friday February 27th at 8:00 a.m. we will unload and setup all dealer tables and display cases. After these are setup the skirting will need to be placed around the tables. The black light tent will also need to be setup. The more help we have the easier it is during setup.

We have the ticket sales, silent auction, grab bags, wheel of fortune, garnet table, hospitality, and scholarship raffle as stations needing help. Shifts are in two hour increments so if possible please sign up for a couple of stations. There is a list of the committee chairs on page 11. Please contact them if you have not already signed up.

There is also 72 display cases that need to be filled contact Twila Gallaher 853-6703 to reserve your display case. The black light room also needs to be filled this year. There is room for 20 Black Light cases. This is one part of the show people look forward to seeing each year lets do our best to fill these cases. Cases can be setup until 8:00 p.m. on Friday night during setup. After that everyone is required to leave.

I need a list from the committee chairs of who is working so I can reserve parking passes for those people. We also need this list so Marge Conley

can make name tags. This is a large job so all help in providing names would be greatly appreciated.

After the show closes at 5:00 p.m. on Sunday March 1st the tear down begins. Again we will need as many people helping as possible. All of the equipment that was taken out of the storage unit will need to go back at this time. The last few years we have been done by 8:30 p.m. after a long weekend most everyone is very tired, so all help at this time would be greatly appreciated.

I look forward to seeing everyone at the show.
Doug Renken
Assistant Show Chairman

Yesteryear Aug. 1953

At the Board meeting delegates were selected for the federation meeting at Portland. Mr. Higby was to secure a copyright for the Gem club picture, and Mr. Beckwith was to get the necessary insurance for the Gem Club displays at the Federation Show. The next field trip was to be to Graveyard point. At the regular meeting Mr. Root Commented that 40 members had attended the annual picnic. Also he reported on a new spot that was opened up at Graveyard point with good nodules.

The Morrisonite claim had been refilled and Dr. Weltner asked if he could take his class there, but was advised to find another location as the trip was too hazardous. Mrs. Higby told how other clubs were enthused about our Idaho rock map, and it was awarded a ribbon the last day of the convention. The October field trip was to Hog Creek for nodules and dendrites. A two day show for the spring of 1954 was discussed. The Gem Club from Enterprise, Or. Told Mr. Beckwith where they had gone on Hog Creek that had been over looked by others. They found good material there. More plans were made for a show in the spring.

Patsy Bethel
Historian

HAPPY BIRTHDAY



JANUARY

1/3 Helen Dillion
 1/8 Ronald Ridenour
 1/11 Terry Tomberlin
 1/11 Ron Bailey
 1/12 Deborah Shaffer
 1/12 Stephanie Potter
 1/12 Erin Snyder
 1/15 Arlene Bailey
 1/16 Alberta Clark
 1/19 Gary Phillips
 1/21 Rachel Longstroth
 1/26 Noah Loewen
 1/29 Marion Phillips

January Birthstones

Faceted - Garnet

Cabochon - Star Garnet

FEBRUARY

2/1 Maria Snyder
 2/1 Charles Osgood
 2/5 Skeeter Eversberg
 2/9 Dylan Habersetzer
 2/10/39 The Idaho Gem Club
 2/10 Kim Williams
 2/10 Sharon Barnes
 2/10 Hailey Madsen
 2/11 Jim Storey
 2/12 William E. Crider
 2/13 Terry Potter
 2/16 Kylee Madsen
 2/17 Kevin Watson
 2/19 Patsy Beck
 2/20 Jackson Neuhoff
 2/25 Deanna Moser
 2/26 David Dieball
 2/28 Ballard Cox
 2/28 Veva Jencks

February Birthstones

Faceted — Amethyst

Cabochon — Onyx

Upcoming Shows

ANNUAL GEM, MINERAL, JEWELRY & FOSSIL SHOW 2009

February 28th 10am - 7pm

March 1st 10am - 5pm

Expo Idaho

Glenwood & Chinden

Owyhee Gem & Mineral Society

March 2009

7th 10am - 6pm

8th 10am - 5pm

O'Conner Field House

2200 Blaine Caldwell, Idaho

DATES TO REMEMBER

GENERAL MEETING:

3rd. Tuesday of every month

January 20, 2009

Banquet

Owyhee Plaza

1109 Main St

Boise, Idaho

No Host Bar 6:00 p.m.

Dinner 7:00 p.m.

BOARD MEETING:

1st. Tuesday of every month

February 3, 2009

Church of the Brethren

2823 N. Cole Road, Boise, Idaho

Meeting Starts at 7:30 pm.

January Refreshment Committee

Banquet Committee

Chair: Jim Predergast 938-7728

REFRESHMENT COMMITTEE GUIDELINES

Need approximately 15 dozen cookies. Wrapped door prizes are also needed. Arrive early enough to set up the chairs. The chairperson brings the coffee urn, coffee, punch, cream, sugar, cups and napkins. Afterward, put meeting tables & chairs away, clean kitchen and sweep the room. Gather and take all the trash with you. Don't forget it is the responsibility of the chair for the coming month to pick up the coffeepot, take it home and bring it the next meeting.

February Refreshment Committee

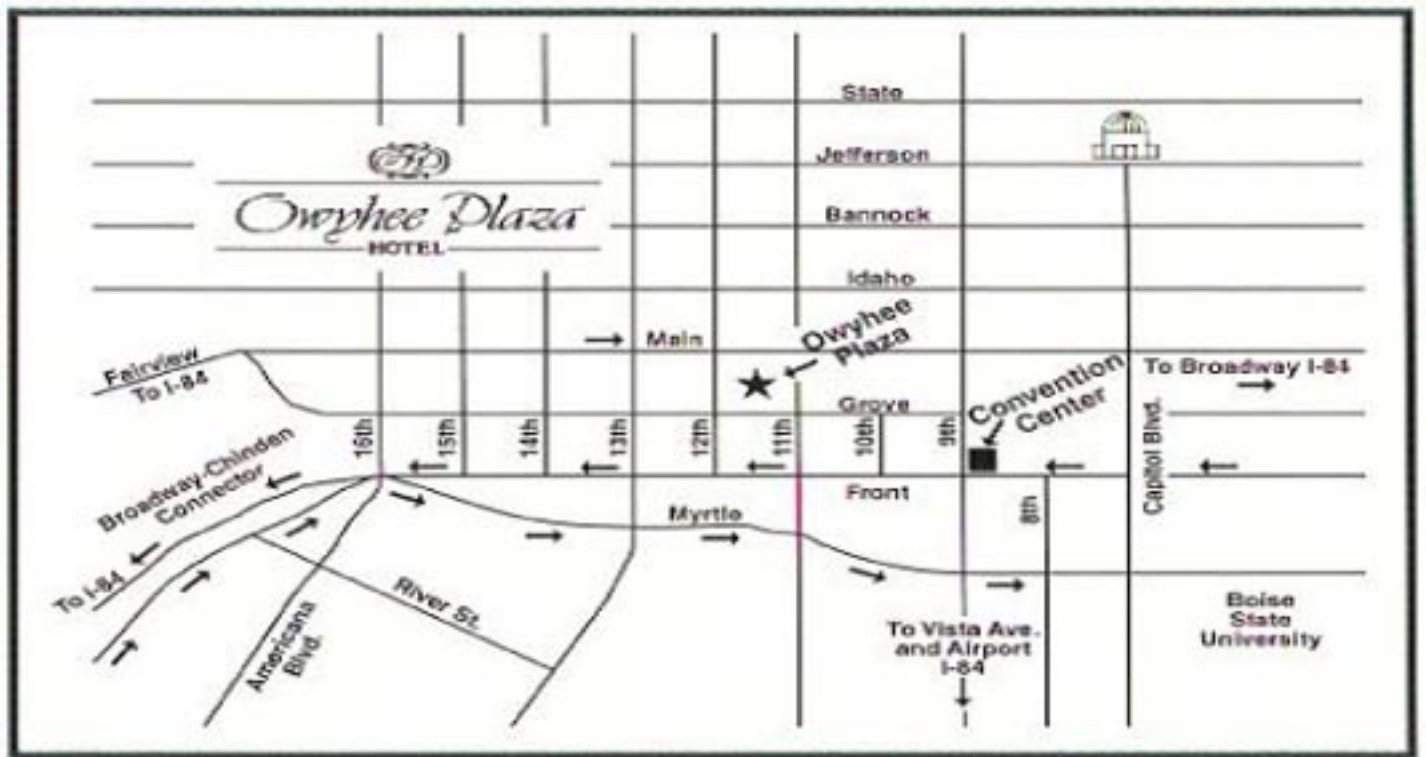
Chair: Jason & Heather Madsen 378-4666

Cheryl Link 375-5360

Myrtle Trevithick 376-4293

Lanna Erickson 507-213-6039

Map To Banquet at Owyhee Plaza



2009 SCHEDULE FOR ALL ROCKHOUNDS POW WOW CLUB OF AMERICA

April 18th & 19th is near Mattawa, Wa. Camping is a free, dry camp site. We furnish outhouses. We will dig for Petrified & Picture Wood, Limb sections, and Diatom Opal. Saturday evening is potluck dinner, then a small meeting & door prizes. (We encourage everyone to donate things they have made, or rocks & slabs they have.) Sunday morning is pancake & sausage breakfast by the Club.

July 1st thru 5th we have the Gem and Mineral show at Jefferson County Fair Grounds in Madras Oregon. Daily field trips to dig for Agate, Jasper, Thunder Eggs, and Petrified Wood on private land for a fee. Seventy-five vendors with everything from rough rock to finished jewelry. Activities going on daily, with our AUCTION on Friday night. THERE IS NO CHARGE FOR THE SHOW.

September 12th & 13th is Teanaway Camp ground by Cle Elum, Wa. Free dry camping with outhouses only. We dig for Agates, Crystals, Jadeite, Jasper, and maybe Blue Agate. Saturday evening Potluck, General meeting, & door prizes follow, donated by our members. (Please bring something you made, or a nice rock or slabs.) Sunday morning Breakfast is provided by the club.

Membership is required for field trips. \$7.50 per person or \$15.00 per family includes up to 17 yrs.

We hope to see you there. Be prepared to have a good time, lots of food, and lots of good friends.

For more information call: Pauline Miller 360-658-8091 paulinem280@aol.com

Rocky Mc Call 360-629-2515 rm711@tgi.net

Thundereggs & Geodes – How are they formed and what is the difference between them?

by Tony Griffin

Geode defined: A rounded, irregularly shaped mass of stone having a cavity lined with crystals.
www.washington.edu/burkemuseum/collections/geology/birthstones/glossary.php

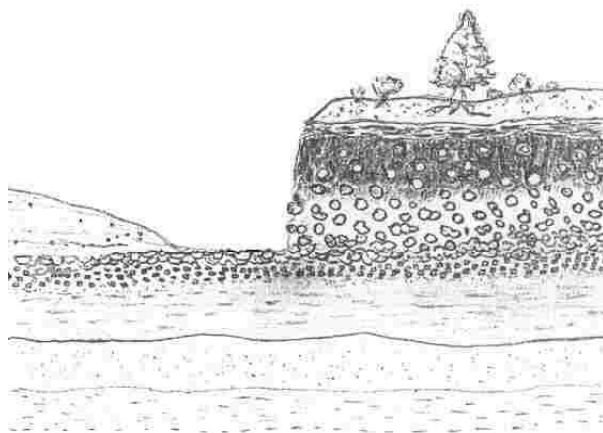
Thunderegg is not synonymous with either geode or agate. A geode is a simple term for a rock with a hollow in it, often with crystal growth. A thunderegg on the other hand is a specific geological structure. A thunderegg may be referred to as a geode if it has a hollow in it, but not all geodes are thundereggs because there are many different ways for a hollow to form. Similarly, a thunderegg is just one of the forms that agate can assume.

DESCRIPTION: Thunder eggs are spheroidal nodules that have the following characteristics: 1.knobby outer surfaces that are drab brown or gray; 2.border zones that consist largely of extremely fine grained feldspar and silica; [and] 3.interiors (for lack of a better word) that typically exhibit roughly star like or irregular overall shapes in equatorial, or near equatorial, sections. These nodules, as typified by thunder eggs from Oregon, “range in size and weight from less than an inch and under one ounce, to over a yard in diameter and over a ton in weight. Though most eggs collected are between two and six inches in diameter.” (www.wamsi.org). The interiors of many thunder eggs consist largely of chalcedony that may be virtually a single color (commonly bluish) or just about any of the combinations of colors and patterns known for diverse agates, or a combination of those alternatives; however, the interiors of some thunder eggs contain jasper, opal, and/or quartz etc. either in lieu of or along with the chalcedony. And, the quartz commonly occurs as druses or larger crystals that protrude into cavities.

What Are Lithophysae ?

Commonly known as thundereggs, lithophysae (Latin for “rock bubbles”) originate as spheroids drawn from the rhyolite into the immiscible components of co-eruptive rhyolite-perlite lava flows and domes. Portions of rhyolite are pulled by turbulence or buoyancy from the parent rhyolite into the perlite, forming spheres which, as temperatures drop to a critical point, crystallize, driving dissolved gases out of solution.

Over many millions of years, the hollow lithophysae fill with silica-laden water through fill-tubes in their surfaces, silicifying their rhyolite shells, and decomposing the perlite surrounding them.



The gases initially coalesce near the center, and then follow the radial crystallization pattern outward, forming a star-shaped core.



The progressive stage in the opening of a cavity in lithophysae is captured in these specimens, as controlled by the pressure of depth in the deposit from which they came.

From above left, at 8 feet deep, no cavities can develop. To its right, the specimen at 7' degassed to form a small crescent. From there, the specimens were dug from 6', 5', 4', 3', 2', and at the surface.





Continued from page 8

Over millions of years, the deposit is exposed to weathering and diagenesis -- the breaking down of the perlite to clay and silica. The silica is transported to the cavities within the waiting lithophysae, and is deposited as opal, agate, and/or quartz. If these nodules fill only partially, leaving a cavity, they-- like any hollow nodule-- are called geodes.

OTHER NAMES: According to Zeitner (1979, p.1260), thunder eggs "have been called nodules, agate filled nodules, eggs, [and] agate eggs" as well as thunder eggs. The terms, listed below, have been spread rather widely.

- Agate geode - marketplace name apparently given on the basis of the presence of their agate interiors and their overall resemblances to geodes per se
- Spherulite (from Greek σφαῖρα [sphere] and λίθος [stone]) - geologists apply this term to masses in rock that 1.are spheroidal; 2.range from small shot to cantaloupe size; [and] 3.consist of crystalline masses -- e.g., acicular crystals -- that radiate out from a central point. Masses with these features that occur in rocks such as obsidian, where they apparently formed as the result of rapid cooling of magma, are the frequently cited examples. Application of this term to thunder eggs is probably based on the fact that many people see thunder eggs as spheroidal stones.
- Star agate - this name seems to come from the German Sternachat [star agate], where it was apparently first and rather frequently applied to thunder eggs that occur in Saxony. It was probably given because of the star like shape of the interiors of many of those thunder eggs.
- Volcanic birthstone - name given in Australian tourist board "come-ons" to thunder eggs from the Mount Hay area of Queensland, "an internationally known destination for thunderegg fossicking." (/www.queenslandholidays.com.au)
- Volcanic geode - marketplace name apparently given because of some overall resemblances to geodes per se and the typical occurrence of thunder eggs in volcanic rocks.

HISTORY: Thunder eggs were named for occurrences in Oregon, where "According to ancient Amerindian legend, when the thunder spirits living in the high recesses of snow-capped Mt. Hood and Mt. Jefferson became angry with one another, amid violent thunder and lightning storms, they would hurl these spherical rocks at each other. The hostile gods obtained these weapons by stealing eggs from the thunder birds' nests, thus the source of the 'Thunderegg.' (www.wamsi.org). It is interesting along this line that according to another Amerindian legend, thunderbird eggs were the progenitors of Chinooks (A warm, dry wind on the eastern side of mountains, often resulting in a quick winter thaw).

Currently, in lieu of summarizing the diverse origins previously suggested for thunder eggs, the pertinent part of an answer the U.S. Geological Survey gives to the question "What is a thunderegg?" follows: "Thundereggs were not, as believed by some people, ejected from volcanoes, but formed in very soft and friable volcanic ash beds. Solutions containing silica permeated the cinders until favorable points for chalcedony deposition were achieved. Aggregations of chalcedony were deposited, but before the material could fully solidify the center of the concretion split apart, possibly because of shrinkage, permitting the later introduction of additional materials [the interiors]. The resulting star-shaped centers of chalcedony may be in the form of agate, jasper, or in some cases different varieties of opal." However, for what it may mean, it should be noted that the USGS attributes the source for this statement not to any of its scientists or investigations but to "Gemstones, An Overview of Production of Specific U.S. Gemstones: U.S. Bureau of Mines Special Publication 14-95"

Source: <http://www.cst.cmich.edu/users/dietr1rv/Default.htm>
<http://www.zianet.com/geodekid/whatarel.htm>

FROM THE EDITOR

The deadline for articles is the board meeting, if it needs to be typed. If the article is sent via e-mail the deadline is the Saturday after the board meeting.

Phone: (208) 362-3941
E-mail: WLR_DKR@MSN.COM
My mailing Address is:
Doug Renken
12843 S. Five Mile Rd.
Kuna ID, 83634

DUES ARE NOW PAST DUE.

Rates are as follows:

\$12.00 per person
\$15.00 per couple
\$17.50 per family

Dues are due by October 31 each year .
Please pay at the next meeting or send
them to
Kathy Griffin, Treasurer
P.O. box 8443
Boise, ID 83707-2443

Welcome New Member

Vern Boyb
5214 Tinker St.
Boise, ID 83709-5838
(208) 362-9368

"CODE OF ETHICS"

I will respect both private and public property and will do no collecting on privately owned land without permission from the owner.

I will keep informed on all laws, regulations or rules governing collecting on public lands and will observe them.

I will, to the best of my ability , ascertain the boundary lines of property on which I plan to collect.

I will use no firearms or blasting material in collecting areas.

I will cause no willful damage to property of any kind such as fences, signs, buildings,etc.

I will leave all gates as found.

I will build fires only in designated or safe places and will be certain they are completely extinguished before leaving the area.

I will discard no burning material - matches, cigarettes, etc.

I will fill all excavation holes which may be dangerous to livestock.

I will not contaminate wells, creeks,or other water supplies.

I will cause no willful damage to collecting material and will take home only what I can reasonably use.

I will practice conservation and undertake to utilize fully and well the materials I have collected and will recycle my surplus for the pleasure and benefit of others .

I will support the rockhound project H.E.L.P (Help Eliminate Litter Please) and will leave all collecting areas devoid of litter, regardless of how found.

I will cooperate with field trip leaders and those in designated authority in all collecting areas.

I will report to my club or federation officer, Bureau of Land Management or other authorities, any deposit of petrified wood or other materials on public lands which should be protected for the enjoyment of future generations for public educational and scientific purposes.

I will appreciate and protect our heritage of natural resources.

I will observe the "Golden Rule", I will use Good Outdoor Manners and will at all times conduct myself in a manner which will add to the stature and Public Image of Rockhounds everywhere.

THE GRINDINGS

is the monthly newsletter of the Idaho Gem Club, Inc., associated with the Northwest Federation of Mineralogical Societies. Permission to copy is freely granted when proper credit is given to both the publication and the author. Articles without bylines are written by the Editor or President.

CHECK OUT THE CLUB WEBSITE!

www.idahogemclub.com



Display Case Application

**Idaho Gem Club Annual Gem & Mineral Show
February 28 & March 1, 2009
Display Application**

Name: _____ Phone: _____

Address: _____

Club Affiliation: _____

Type of material and/or type or kind of display: _____

Number of cases: _____

Borrow a case _____ Will provide own case _____

Size of your case: _____

Inside Dimensions of club cases are 46.5" wide by 22.5" deep by 22.5" high

(Please note: Loaned cases do not have liners -- you need to bring your own.)

Show dates: Saturday, 28 February and Sunday, 1 March, 2009

Set-up: 3:00 P.M. Friday, 27 February, 2009

A maximum of 150 watts of lighting will be provided per case. Security is provided around the clock. However, no responsibility will be assumed by the Idaho Gem Club, Inc.

Application deadline is: Saturday, 21 February 2009

Mail application directly to: Twila Gallaher 208-853-6703 Or
8143 W. Prince Dr. tkgboise@cableone.net
Boise, ID 83714-2179

2008 Show Chairs

Show Chairman...Charlie Smith (208) 628-4002
Asst. Show Chairman...Doug Renken 362-3941
Show Setup Chairman...Kevin Watson 362-6413
Ticket Sales Chairman... Robert and Debra Burns
888-3084
Hospitality Chairman...Cathy Parsons 342-5339

Demonstration Chairman...Tom Rogers 465-5529
Black Light Room Chairman...Jim Witt 362-6042
Wheel of Fortune ...Laura Lindsay 703-6133
Grab Bag Chairman...Arlene Bailey 562-8030
Garnet Table ...Mike & Sue Witschen 336-4556
Silent Auction Chairman...Ron Ridenour 336-5619
Scholarship Chairman...Terry Tomberlin 343-7506
Display Chairman....Twila Gallaher 853-6703
Credentials Chairman...Marge Conley 375-8935

The purpose of the Idaho Gem Club is to promote mutual, educational and scientific interests and benefits of its members in mineralogy, geology, gemology, the art of lapidary and kindred arts and sciences.

Dues:

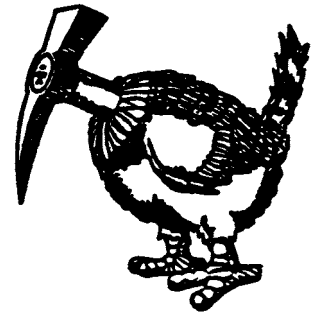
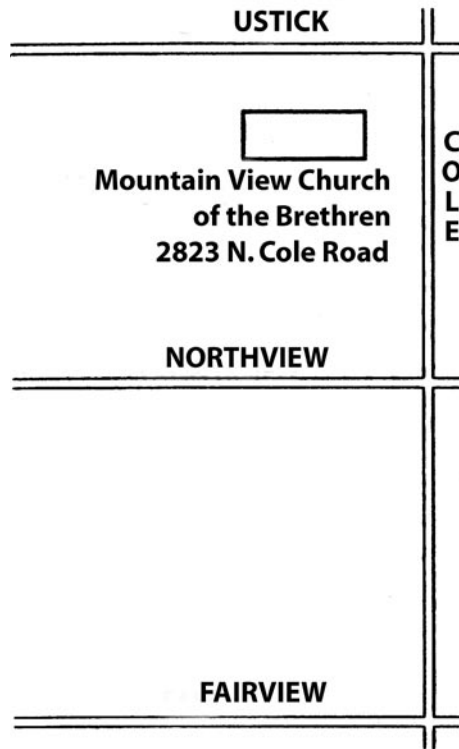
- \$12.00 per person
- \$15.00 per couple
- \$17.50 per family

Subscription:

\$10.00 per year

General Meeting:

3rd. Tuesday of each
Month at 7:30 p.m.



The Whangdoodle Bird
(Often seen on field trips)



Idaho Gem Club, Inc.

P.O. Box 8443
Boise, Idaho 83707-2443

WINTER

