

Grindings

Idaho Gem Club, Inc.

P.O. Box 8443 ▼ Boise, Idaho 83707-2443

VOL 69 NO 2

February 2009



BOARD OF DIRECTORS

Tony Griffin
President
467-9286

Willa Renken
1st Vice President
362-3941

Phil Neuhoff
2nd Vice President
939-4508

RECORDING SECRETARY
Jason Madsen
378-4666

Joe Nielson
362-3522

Ed Moser
340-8060

Terry Tomberlin
343-7506

Twila Gallaher
853-6703

Dan Phillips
585-3019



TREASURER
Kathy Griffin
467-9286

NFMS DIRECTOR
Charles McCreath
344-5085

EDITOR
Doug Renken
362-3941
WLR_DKR@MSN.COM

CLUB WEB SITE
www.idahogemclub.com

President's Message

Once again our club has an extraordinary Board of Directors for this coming year. We have returning friends with experience and three new board members that bring experience from other organizations they have belonged to that will be a great benefit to our club.

Our annual Gem, Mineral, Jewelry, & Fossil Show is just around the corner. It's scheduled for February 28th – March 1st 2009 at Expo Idaho Fairgrounds. On February 26th starting at 1 p.m. we will need help at our storage facility (Lockaway Storage) to load trucks and trailers. If you have a truck or trailer we can use, please bring either or both. On February 27th starting at 8 a.m. we will start setting up for the Show at the fairgrounds. Tear down of the show will start at 5 p.m. at the close of the Show on March 1st. Signup sheets will be available at our next meeting on February 17th. This is your show, so please help if you can.

Twila Gallaher has asked for more people to sign up to do a display case at our show. So far there are still 11 cases out of the 72 cases available that individuals need to fill. This number does not include the black light display. This is a great opportunity to show off your interests and skills. Please support Twila in this!

In light of this, Jim Storey has graciously agreed to give us a demonstration on how to setup a display case at our next General Membership meeting. For those of us that need ideas of ways to make our displays shine, Jim will be able to help.

Doug has posted our Field Trips for the year 2009 on our website. All of our trips will be on a Saturday this year instead of Sunday. I haven't decided on where to go in November, but I do have two trips without dates that need cooler weather so we won't bake in the heat and sun.

If you can get out in the field this month, please take the opportunity to go. The ground is hard in the morning, but frost heave has brought a lot of petrified wood, jasper, and mineral specimens to the surface. There's no dust covering what is there making specimens easier to find. Just dress for the weather, don't drive off the paths and roads, and it gets muddy in the afternoon. I went out with two "cabin fevered" gentlemen from the OGMS on February 5th. Succor Creek coming in from Homedale is clear of snow below the mountains. It was a balmy 34 degrees in the afternoon.

Tony Griffin
President

**MINUTES OF THE IDAHO GEM CLUB
GENERAL MEETING ♦
JANUARY 20, 2009**

Commencement of The Annual Banquet for The Idaho Gem Club at the Owyhee Plaza began at 6:00 p.m. with cocktails and dinner at 7:00 p.m. Members and guests were welcomed by host, Gene Stewart, along with introducing the head table. Present were, Cathy Parsons, Ron and Jean Dingley, Charles and Shirley McCreath, Tony and Kathy Griffin, Joe Nielsen, and Eugene and Alice Stewart. The Invocation was given by Sandy Blodgett.

During dinner, the door prizes were drawn by Jim Prendergast and presented to Kathy Griffin and Debbie Knudsen. Also, Gene Stewart drew the winning number for the table prize, being the lucky number five. The prize on each table was a malachite dish.

Proceedings progressed to Charles Osgood briefly summarizing the progress of the License Plate Bill with a mention that the first reading of the Bill by the Senate will be in the middle of February.

Gene Stewart introduced the Past Presidents; being, Patsy Bethel, Gene Stewart, Charles McCreath, Chris Blickfeldt, Willa Renken, Ron Ridenour, Marge Conley and Cathy Parsons.

A moment of Silence for members who passed in 2008 was given. Members being, Pat Conley, Linda K. Moilander, Mable Castelin, Mildred Beckwith, and Alberta Stewart.

Project of the year award was presented to Jean Dingley for her silver work.

Cathy Parsons presented special awards of recognition to the Madsen Family for their work with the juniors, Jean Dingley for acting secretary, and to Willa and Doug Renken for their work and contribution in all areas with the Club.

The Business Meeting was brought to order by Cathy Parsons.

A Motion was made by Marge Conley to accept the minutes as printed in the "Grindings". The motion was seconded by Jim Dillion and motion carried.

Kathy Griffin, Treasurer, stated the annual audit is pending.

Committee Reports reported.

Sunshine – Arlene Bailey stated that Joann Alvey is in relapse.

Show – Doug Renken stated that the grab bags fill was a great success as there were 1,225 bags stuffed. He also mentioned there were signup sheets around the tables from the different committee chairs for show participation. Also, to turn in or contact Twila Gallaher with regards to display case applications.

Building Fund – Amy Watson won the Banquet sphere raffle. Joe Nielsen further mentioned about the upcoming raffle at the show, another Owyhee Jasper sphere.

General business meeting closed with Gene Stewart and Jim Prendergast bringing up Cathy Parsons, current President, with reflections of the past year. With special thanks for her service a gift was presented being a set of rockhound/gardening tool set. Thanks, Cathy Parsons.

Gene Stewart recognized the Life Members. Roy and Patsy Bethel, Chris and Peggy Blickfeldt, Charles and Shirley McCreath, Charles and Helen Smith, Eugene and Alice Stewart, Marge Conley, Gary Phillips, Clarence and Betty Trebick, Mabe Taylor, Pat Cantwell, Mattie Clay, and Al and Hilda Larson.

Gene Stewart presided over the installation of the new Officers and Board of Directors for 2009. Officers: President Tony Griffin, 1st Vice President Willa Renken, 2nd Vice President Phil Neuhoff, Secretary Jason Madsen, Treasurer Kathy Griffin, Federation Director Charles McCreath, Librarian Terry Tomberlin, and Historian Patsy Bethel. Board of Directors: Tony Griffin, Dan Phillips, Ed Moser, Twila Gallaher, Joe Nielsen, Jason Madsen, Willa Renken, Phil Neuhoff, and Terry Tomberlin.

A special commendation was given to Jim Prendergast and the Banquet committee for an excellent job in putting on and setting up the 2009 annual banquet. The food was excellent and the service was superb, thank you Owyhee Plaza.

Gene Stewart passed on the President's Opal and the Jade gavel to Tony Griffin, President 2009. With a few words of acceptance Tony adjourned the meeting. With all in good cheer, cameras flashing, a good night to all and safe travels home.

*Respectfully submitted,
Jean Dingley,
Acting Secretary*

**MINUTES OF THE IDAHO GEM CLUB
BOARD MEETING ♦
FEBRUARY 3, 2009**

President Tony Griffin called the meeting to order at 7:33. The following board members and officers were present: Tony Griffin, President, Twila Gallaher, Ed Moser, Terry Tomberlin, Jason Madsen, Dan Phillips, and Kathy Griffin.

Guests were: Doug Renken and Linda Phillips.

Board members not present, but excused were Phil Neuhoff, Joe Nielsen, and Willa Renken.

Twila Gallaher moved to accept the minutes as printed in the "Grindings". Terry Tomberlin seconded the motion, and the motion carried.

Treasurer's Report - Kathy Griffin presented the treasurers report.

Federation Report – Ed Moser discussed the Federation's report. There is a poster contest being run by the American Federation for grades 1 to 8. Check their website for details or call Ed Moser at 340-8060.

COMMITTEE REPORTS

WORKSHOP: Workshops will resume in May.

Refreshments: No report.

Role: No report.

FIELD TRIP: Tony Griffin stated that he is looking for a field trip coordinator. In the mean time he will continue to lead the field trips. Field trips for the coming year are posted on the website. The first trip of the year will be in March to the IGC opal claim and the Queenstone claim.

LIBRARIAN: Terry Tomberlin stated that there are a few library materials that have been checked out for an extended period of time. He urges members to return materials in a timely manner. Terry made a motion to purchase a set of bookcases from the general fund to store the library materials in. This way the bookcases can be locked and kept at the meeting house, instead of transporting the materials to and from the meeting house each month. The motion was seconded by Twila Gallaher. The motion was carried by the board.

JUNIORS: Ed Moser discussed the poster contest being offered by the American Federation.

See their website for details, or call Ed at 340-8060. The contest is titled "Gem Stones of the World". The Deadline is April 1, and the winners will be announced April 25. Ed also discussed the Quiz contest in the Rock and Gem magazine. A junior project booth will be set up at the IGC show. The project will consist of making pet rocks.

SUNSHINE REPORT: Tony Griffin gave the sunshine report. Harold Robinson has passed away. He is survived by his wife, Dana, and his daughter, Kristi. Sympathies will be sent to Dana. Jim Storey has been down with the flu also. A get well card has been sent to him.

BUILDING FUND: Joe Nielson reported (phone call) that the sphere raffled off at the banquet was a success. There will be another sphere raffled off at the IGC show.

SHOW: Doug Renken stated that there are 50 display cases signed up for the show and 11 black light displays signed up for the show. Setup materials will be loaded on Thursday, February 26, at 1:00 at Lock-A-Way Storage. There is a U-haul truck reserved, but anyone with trucks and/or trailers willing to help are welcome and needed. Set up will start at 8:00 am, February 27 at the Western Idaho Fairgrounds in the Expo building. The show will run Saturday 10:00am to 7:00 pm and Sunday from 10:00am to 5:00 pm. Take down will be after the show on Sunday. New post cards for reminders for the 2010 show will be available at the 2009 show.

UNFINISHED BUSINESS: License plate proposal is projected to take place near the end of February. The License plate committee will keep the club posted. There was some discussion of purchasing a new 30" Covington saw to replace the current 30" saw. Terry Tomberlin and Jason Madsen will make some final efforts to refurbish the current saw. Volunteers are welcome to repair and /or work on the saw.

MEMBERSHIP APPLICATIONS: A new member application was received from Lois McDonald. Twila Gallaher moved to accept the application and Terry Tomberlin seconded the motion. The board carried the motion.

Jim Storey will do a demonstration on display cases at the next General Membership meeting.

Meeting adjourned at 9:03pm.

*Respectfully submitted,
Jason Madsen
Secretary*

Gem Show 2009

The following is a repeat from the January newsletter. It was requested that this information be put in the newsletter last month.

The Annual show is upon us again. For the new members in the club this is the main fund raiser for the club. This is a club show and does require full club support. All who contribute will be allowed into the show for free. If you are a club member and do not want to contribute you will be required to pay admission.

Setup will begin on Thursday February 26th at 1:00 p.m. at Lockaway Storage 5246 Chinden Blvd. At that time we will unload as much of the storage unit as possible depending on available empty trucks. The tables will be loaded into the u-haul truck. Then all other show equipment (electrical, lights, cases, case fronts, silent auction rock) will be loaded into empty trucks. The more we can load on Thursday the easier the setup will go on Friday. Then on Friday February 27th at 8:00 a.m. we will unload and setup all dealer tables and display cases. After these are setup the skirting will need to be placed around the tables. The black light tent will also need to be setup. The more help we have the easier it is during setup.

We have the ticket sales, silent auction, grab bags, wheel of fortune, garnet table, hospitality, and scholarship raffle as stations needing help. Shifts are in two hour increments so if possible please sign up for a couple of stations. There is a list of the committee chairs on page 11. Please contact them if you have not already signed up.

There is also 72 display cases that need to be filled contact Twila Gallaher 853-6703 to reserve your display case. The black light room also needs to be filled this year. There is room for 20 Black Light cases. This is one part of the show people look forward to seeing each year lets do our best to fill these cases. Cases can be setup

until 8:00 p.m. on Friday night during setup. After that everyone is required to leave.

I need a list from the committee chairs of who is working so I can reserve parking passes for those people. We also need this list so Marge Conley can make name tags. This is a large job so all help in providing names would be greatly appreciated.

After the show closes at 5:00 p.m. on Sunday March 1st the tear down begins. Again we will need as many people helping as possible. All of the equipment that was taken out of the storage unit will need to go back at this time. The last few years we have been done by 8:30 p.m. after a long weekend most everyone is very tired, so all help at this time would be greatly appreciated.

I look forward to seeing everyone at the show.

Doug Renken
Assistant Show Chairman

Juniors Report

There is a kids contest in the February issue of Rock and Gem magazine on page 46. The quiz is due by the last day of February.

The American Federation of Mineralogical Societies newsletter has a poster contest for the youth in grades 1 through 8 due by April 1, 2009. Please contact Ed Moser, for rules or go to the website at www.amfed.org. The theme is: "Gemstones of the World".

The juniors are going to have a table at the gem show this year. Anyone that can help please contact Ed Moser

Ed Moser
Cell 340-8060
Juniors Chair

Yesteryear *January 1950*

In January of 1950 it was decided to cancel the field trip because of the weather. The Program was on Crystals. Mr. Whipple told of a cornflower blue Sapphire he had found at rock flats and Lester Morris brought a specimen of stilbite he had found up Warm springs gulch. Tom Allen went rock hunting anyway finding a few quartz crystals, in the snow, at Lucky Peak.

The Whang Doodle mine was re-staked and new papers were put in the proper box. A field trip for March was planned to Graveyard Point.

There was always a program given by members on rocks and trips. Dudley Stewart gave a program on the sort of rock we should pick up. He suggested looking for color and beauty first, and then for bug holes, cracks and size-what if you can't find any real good ones? Can't you bring them home and then let your husband pack them out the next time for some one else to find.

The annual dinner was to be held May 9th, at the Immanuel Methodist church.

It was decided the club would set up a booth on Music Week, between 9th and 10th on Idaho Street.

Miss Mabel Sturgis was elected President for the coming year. Skits were done by Gem Club members and the Club band played.

Patsy Bethel
Historian

SAVE STAMPS

Just a note to remind people to save their postage stamps to donate to the Federation. The stamps are sold and the proceeds are donated to cancer research. Cut at least 1/4 inch margin around the stamps. You can turn them into Chuck McCreath at our next meeting. **THANK YOU!**

MINERAL IDENTIFICATION CLASS

Sponsored by the IDAHO MUSEUM of MINING and GEOLOGY (teachers: Coyote Short and Lois McDonald)

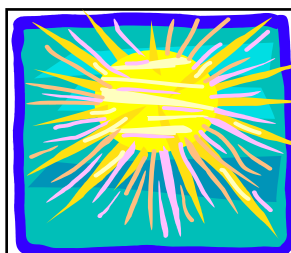
Thursday, March 26, 2009; 7:00 pm, Idaho History Center, 2205 Old Penitentiary Road.

Cost: \$7.00 (for non-IMMG members). Tools and books can be purchased at cost or

Bring: your own Mineral books, identification tools (penny, nail, jackknife, piece of glass, magnifying glass, magnet, streak plate)

Receive: Mineral sample box (15 specimens) and resource materials

Reserve your place by calling Lois McDonald 713-2061 (evening/weekend.) Space is limited



Sunshine Lady

Arlene Bailey is the club sunshine lady. Her job is to send some cheer to members who are ill or just need some cheering up. But she needs your help in doing this job. If you know of someone who has been recently ill let her know so she can send them a card. Her phone number is 562-8030. Thank you in advance for your help.

February Program

The program for February will be a presentation on how to setup a display case by Jim Storey.

HAPPY BIRTHDAY



FEBRUARY

2/1	Maria Snyder	3/1	Tristen Griswold
2/1	Charles Osgood	3/3	Pat Cantwell
2/5	Skeeter Eversberg	3/5	Gene Alvey
2/9	Dylan Habersetzer	3/5	Katy Griswold
2/10/39	The Idaho Gem Club	3/6	Jean Dingley
		3/6	Jason Madsen
2/10	Kim Williams	3/7	Ronald Dingley
2/10	Sharon Barnes	3/7	Judy Blodgett
2/10	Hailey Madsen	3/8	Tim Hillebrant
2/11	Jim Storey	3/15	John Howell
2/12	William E. Crider	3/18	Roger Nelson
2/13	Terry Potter	3/18	Vicki Bickford
2/16	Kylee Madsen	3/20	Robert Dewey
2/17	Kevin Watson	3/28	Larry Friend
2/19	Patsy Beck	3/29	Barbara Snow
2/20	Jackson Neuhoff	3/30	Diana Harshman
2/25	Deanna Moser	3/30	Mary Ann Gillis
2/26	David Dieball	3/30	Heather Madsen
2/28	Ballard Cox	3/31	John Meyer
2/28	Veva Jencks	3/31	Bonnie Sue Cooper

February Birthstones
Faceted — Amethyst
Cabochon — Onyx

March Birthstones
Faceted - Aquamarine
Cabochon - Bloodstone

Upcoming Shows

ANNUAL GEM, MINERAL, JEWELRY & FOSSIL SHOW 2009

February 28th 10am - 7pm

March 1st 10am - 5pm

Expo Idaho

Glenwood & Chinden

Owyhee Gem & Mineral Society
 March 2009

7th 10am - 6pm

8th 10am - 5pm

O'Conner Field House
 2200 Blaine Caldwell, Idaho

DATES TO REMEMBER

GENERAL MEETING:
3rd. Tuesday of every month
 February 17, 2009
 Church of the Brethren
 2823 N. Cole Road, Boise, Idaho
 Meeting Starts at 7:30 pm.

BOARD MEETING:
1st. Tuesday of every month
 March 3, 2009
 Church of the Brethren
 2823 N. Cole Road, Boise, Idaho
 Meeting Starts at 7:30 pm.

February Refreshment Committee

Chair: Jason & Heather Madsen 378-4666
 Cheryl Link 375-5360
 Myrtle Trevithick 376-4293
 Lanna Erickson 507-213-6039

REFRESHMENT COMMITTEE GUIDELINES

Need approximately 15 dozen cookies. Wrapped door prizes are also needed. Arrive early enough to set up the chairs. The chairperson brings the coffee urn, coffee, punch, cream, sugar, cups and napkins. Afterward, put meeting tables & chairs away, clean kitchen and sweep the room. Gather and take all the trash with you. Don't forget it is the responsibility of the chair for the coming month to pick up the coffeepot, take it home and bring it the next meeting.

March Refreshment Committee

Chair: Chair: Terry Tomberlin 343-7506
 Twila Gallaher 853-6703
 Gene & Joan Alvey 468-3067

In Remembrance



Harold B. Robinson

1953 - 2009

Once more we bid farewell to one of our own. Harold or Herk as his friends knew him was born in Boise on Coronation Day June 2, 1953. His childhood was spent in the city of the trees where he attended school and graduated from Borah High School in 1972. When Harold met Dana Hackwell he knew he had met the love of his life and married her on March 9, 1984. Harold worked as hard as he played and with his love for the outdoors it was no surprise that he was able to find work with Boise City Forestry. His first ten years with the City helped him to realize how much he enjoyed watching all his hard work grow and flourish which eventually gave him the desire to become a Certified Arborist and he spent the next 20 years managing the Laura Moore Cunningham Memorial Arboretum. In 1988 Harold and Dana were blessed with the best Christmas present anyone can receive their daughter Kristy. Loving the outdoors as he did it was no surprise that he became active in the gem club. His rock hound humor could be found in a number of our newsletters. He was also featured in the Jan. 2007 Rock & Gem as a craftsman of the month for his beautiful Sun Catchers. We know Herk will be up there telling someone "You might be a rock hound if". We really will miss our friend and send our prayers for comfort to his family.


*In Loving Memory
Willa Renken*

Is It Hard or Tough?

The terms "hardness" and "toughness" are sometimes confused when comparing qualities of gemstones—and there is a great deal of difference. The diamond is far and away the hardest, for it will scratch, cut, or polish any other stone. As an example, with a diamond-pointed wheel dresser as used by lapidary workers, silicon carbide grinding wheels could be reduced to dust in minutes. But for toughness (resistance to chipping and breaking), jade has it beat by a country mile. A diamond will scratch and easily cut jade, but a jade hammer can crush a diamond to powder. It is the cross-matted structure of jade that makes it nearly impossible to break. Never fear if you accidentally drop a solid jade cabochon on concrete. If it breaks, better check it because it is probably not jade. The Chinese used jade for anvils just as we use steel. Sometimes, the same anvil was used for several generations. Jade used for axes and hammer-like tools centuries ago was a practical, useful, and highly valued material.

from Gemstone Stories

via Rockhound Rumbblings, 3/89, Rock Rollers, 8/08, Rock Trails 1/09



*Remember to collect and bring Teddy Bears to the meetings for our public service project. The bears and other stuffed animals are given to emergency personnel to give to the children at the scene of emergencies. Please give your animals to Debbie Knudsen or Skeeter Eversburg. **THANK YOU!***

FIELD TRIP SCHEDULE
NFMS/AFMS Show and Convention
Billings, Montana

Please Note: All field trips are scheduled after the show between the dates of August 3, and August 10, 2009. This makes it possible for all involved in the show to be able to participate in the trips. All persons attending the field trips will be asked to sign a liability release.

Monday, 3 August,

BEAR CANYON, in new collecting area next to the old. Collect black and white fortification agate. This area has been known by locals for years, but one of Montana's best kept secrets. The trip will also include several nearby fossil locations. This location 75 miles south of Billings.

Tuesday 4, August,

Stillwater Mine Smelter, Processing plant, Columbus, Montana, World's largest Platinum, Palladium Mine, Guided Tour. Located 40 miles west of Billings. On I-90.

Tuesday 4, August

Geology of the Pryor Mountains, led by Dr. David Lopez, senior research geologist, for the Montana Bureau of Mines and Geology, Montana Tech. The trip will be a tour of the Pryor Mountains with stops showing special features and geological structure. This is a beautiful trip in itself and will be great fun.

Wednesday 5, August

Travel to Glendive, Montana, Afternoon Fieldtrip to some gravel bars on the Yellowstone River. Collect Montana Agate, Petrified Wood, Fossils. 1pm start will give everyone plenty of time on the river, as sun goes down around 9pm. 220 miles east of Billings on I 94.

Thursday 6, August

Glendive, Montana Area. Hell Creek Formation, Cretaceous Period. Collect Fossil Pine cones, Petrified wood, Fossil leaves, Figs, Iron concretions. There are also Dinosaur Bone, sharks teeth, and Croc teeth but there are restrictions on collecting vertebrate fossils as we will be on BLM land. 15 miles south of Glendive.

Thursday 6, August

Glendive Area, River gravel bars collecting agate, fossils, Jasper, pet wood etc This trip will be optional, if we get enough collectors that want to go out again after the Wednesday trip, or for those that arrive late and missed the first trip. Gravel bars are within 15 miles of Glendive.

Friday 7, August

Glendive area - Pierre Shale - Cretaceous Period - Central Seaway. You will be Collecting, Baculitidae, Scaphitidae, Nautilidae, brachiopods, and more. 20 + - miles south east of Glendive.

Continued on page 9

Continued from page 8

Saturday 8, August

Hysham, Montana: Bearpaw shale, Ammonites (Placenticerias) schaphitidae, baculites, and other material: (this trip is tentative, as we don't have final approval from the Grazing District.) 85 miles east of Billings.

Saturday 8. August

Portal Creek, approx 30 miles south of Bozman, Montana, Petrified wood, agate nodules, Beautiful mountains trip. Bozman is 145 miles west of Billings on I-90.

Other trips or locations that are being studied.

Special opening of Spenser Opal mines, Idaho. Fee Dig Sapphire Dig, Helena or Gem Mountain Crystal Park, Quartz crystals, scepters etc.

For more information contact: Doug True dtruefossils@yahoo.com

Proposed 2009 Idaho Gem Club Field Trips

March 21st

Queenstone / Whang Doodle IGC claims
jasper & opal

April 25th

Shell Hill - Oreana, Idaho
fossil shells

May 20 to 25, 2009

NMFS/AFMS Davis Creek/Lassen Creek, CA
Field Trip
obsidian

May 23rd - 25th

Idaho Gem Club Sunstone Claim - Plush, Oregon
(overnighter)
sunstones - facetable oligoclase feldspar

June 20th

McDermott, Or/Nv (overnighter)
petrified wood, jasper, agate, sagenite, flow
stone

July 25th

Graveyard Point - IGC claim
plume agate, moss agate

July 30th - August 2nd

NFMS/AFMS Show - Billings, Montana

August 22nd

Wagontown/Cow Creek
petrified wood

September 19th

Carey moss agate- Carey, Idaho

October 24th

Succor Creek - red thundereggs

November 21st

To be determined

Special Field Trips

Texas Springs - limb casts - pink agate
Beacon Hill - When roads are dry

FROM THE EDITOR

The deadline for articles is the board meeting, if it needs to be typed. If the article is sent via e-mail the deadline is the Saturday after the board meeting.

Phone: (208) 362-3941
E-mail: WLR_DKR@MSN.COM
My mailing Address is:
Doug Renken
12843 S. Five Mile Rd.
Kuna ID, 83634

DUES ARE NOW PAST DUE.

Rates are as follows:

\$12.00 per person
\$15.00 per couple
\$17.50 per family

Dues are due by October 31 each year .
Please pay at the next meeting or send
them to
Kathy Griffin, Treasurer
P.O. box 8443
Boise, ID 83707-2443

Welcome New Member

Lois McDonald
P.O. Box 1075
Meridian, ID 83680-1075
(208) 713-2061

"CODE OF ETHICS"

I will respect both private and public property and will do no collecting on privately owned land without permission from the owner.

I will keep informed on all laws, regulations or rules governing collecting on public lands and will observe them.

I will, to the best of my ability , ascertain the boundary lines of property on which I plan to collect.

I will use no firearms or blasting material in collecting areas.

I will cause no willful damage to property of any kind such as fences, signs, buildings,etc.

I will leave all gates as found.

I will build fires only in designated or safe places and will be certain they are completely extinguished before leaving the area.

I will discard no burning material - matches, cigarettes, etc.

I will fill all excavation holes which may be dangerous to livestock.

I will not contaminate wells, creeks,or other water supplies.

I will cause no willful damage to collecting material and will take home only what I can reasonably use.

I will practice conservation and undertake to utilize fully and well the materials I have collected and will recycle my surplus for the pleasure and benefit of others .

I will support the rockhound project H.E.L.P (Help Eliminate Litter Please) and will leave all collecting areas devoid of litter, regardless of how found.

I will cooperate with field trip leaders and those in designated authority in all collecting areas.

I will report to my club or federation officer, Bureau of Land Management or other authorities, any deposit of petrified wood or other materials on public lands which should be protected for the enjoyment of future generations for public educational and scientific purposes.

I will appreciate and protect our heritage of natural resources.

I will observe the"Golden Rule", I will use Good Outdoor Manners and will at all times conduct myself in a manner which will add to the stature and Public Image of Rockhounds everywhere.

THE GRINDINGS

is the monthly newsletter of the Idaho Gem Club, Inc., associated with the Northwest Federation of Mineralogical Societies. Permission to copy is freely granted when proper credit is given to both the publication and the author. Articles without bylines are written by the Editor or President.

CHECK OUT THE CLUB WEBSITE!

www.idahogemclub.com



Display Case Application

**Idaho Gem Club Annual Gem & Mineral Show
February 28 & March 1, 2009
Display Application**

Name: _____ Phone: _____

Address: _____

Club Affiliation: _____

Type of material and/or type or kind of display: _____

Number of cases: _____

Borrow a case _____ Will provide own case _____

Size of your case: _____

Inside Dimensions of club cases are 46.5" wide by 22.5" deep by 22.5" high

(Please note: Loaned cases do not have liners -- you need to bring your own.)

Show dates: Saturday, 28 February and Sunday, 1 March, 2009

Set-up: 3:00 P.M. Friday, 27 February, 2009

A maximum of 150 watts of lighting will be provided per case. Security is provided around the clock. However, no responsibility will be assumed by the Idaho Gem Club, Inc.

Application deadline is: Saturday, 21 February 2009

Mail application directly to: Twila Gallaher 208-853-6703 Or
8143 W. Prince Dr. tkgboise@cableone.net
Boise, ID 83714-2179

2008 Show Chairs

Show Chairman...Charlie Smith (208) 628-4002
Asst. Show Chairman...Doug Renken 362-3941
Show Setup Chairman...Kevin Watson 362-6413
Ticket Sales Chairman... Robert and Debra Burns
888-3084
Hospitality Chairman...Cathy Parsons 342-5339

Demonstration Chairman...Tom Rogers 465-5529
Black Light Room Chairman...Jim Witt 362-6042
Wheel of Fortune ...Laura Lindsay 703-6133
Grab Bag Chairman...Arlene Bailey 562-8030
Garnet Table ...Mike & Sue Witschen 336-4556
Silent Auction Chairman...Ron Ridenour 336-5619
Scholarship Chairman...Terry Tomberlin 343-7506
Display Chairman....Twila Gallaher 853-6703
Credentials Chairman...Marge Conley 375-8935

The purpose of the Idaho Gem Club is to promote mutual, educational and scientific interests and benefits of its members in mineralogy, geology, gemology, the art of lapidary and kindred arts and sciences.

Dues:

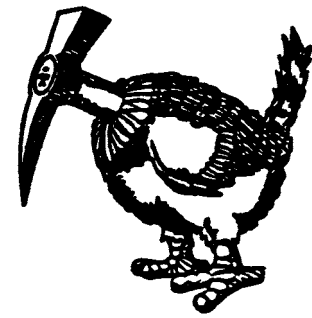
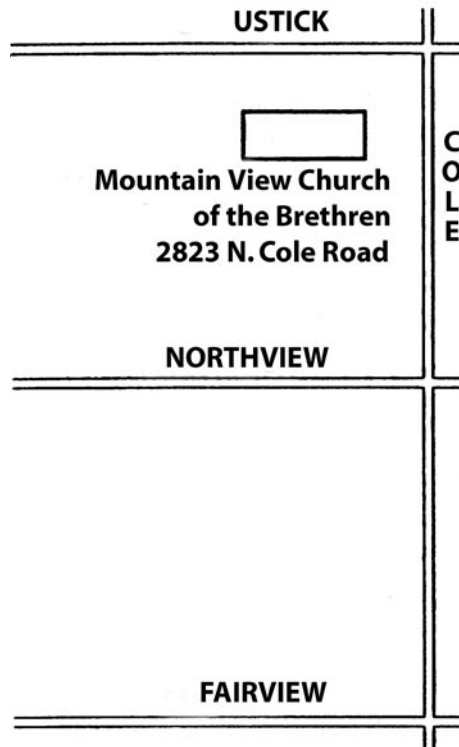
- \$12.00 per person
- \$15.00 per couple
- \$17.50 per family

Subscription:

\$10.00 per year

General Meeting:

3rd. Tuesday of each
Month at 7:30 p.m.



The Whangdoodle Bird
(Often seen on field trips)



Idaho Gem Club, Inc.

P.O. Box 8443
Boise, Idaho 83707-2443

Please note that if there is a red dot by your address label, the treasure's records indicate that your dues have not been paid. If this is incorrect contact Kathy Griffin. Otherwise this will be your last newsletter unless your dues are paid in full.